



389.2
2011

2

ISO 389-2:1994

Acoustics — Reference zero for the calibration of audiometric equipment — Part 2:
Reference equivalent threshold sound pressure levels for pure tones and insert earphones
(IDT)



2012

389

389-1:1991

()

—
389-4
8

«

»,

60318-3,

60318-1.

Федеральное агентство
по техническому регулированию
и метрологии

Федеральное агентство
по техническому регулированию
и метрологии

Федеральное агентство
по техническому регулированию
и метрологии

Slate system for ensuring the uniformity of measurements. Acoustics. Reference zero for the calibration of audiometric equipment. Part 2. Reference equivalent threshold sound pressure levels of pure tones for insert earphones

— 2012—12—01

1

()

389-1.

4.

2

8

389-1:1998

1.

(389-1:1998. Acoustics — Reference zero for the calibration of audiometric equipment — Part 1: Reference equivalent threshold sound pressure levels for pure tones and supra-aural earphones)

60318-4:2010

4.

(IEC 60318-4:2010. Electroacoustics — Simulators of human head and ear — Part 4: Occluded-ear simulator for the measurement of earphones coupled to the ear by means of ear inserts)

60318-5:2006

5.

2 3

(IEC 60318-5:2006. Electroacoustics — Simulators of human head and ear — Part 5:2 cm³ coupler for the measurement of hearing aids and earphones coupled to the ear by means of ear inserts)

3

8

389-1,

3.1

(ear insert):

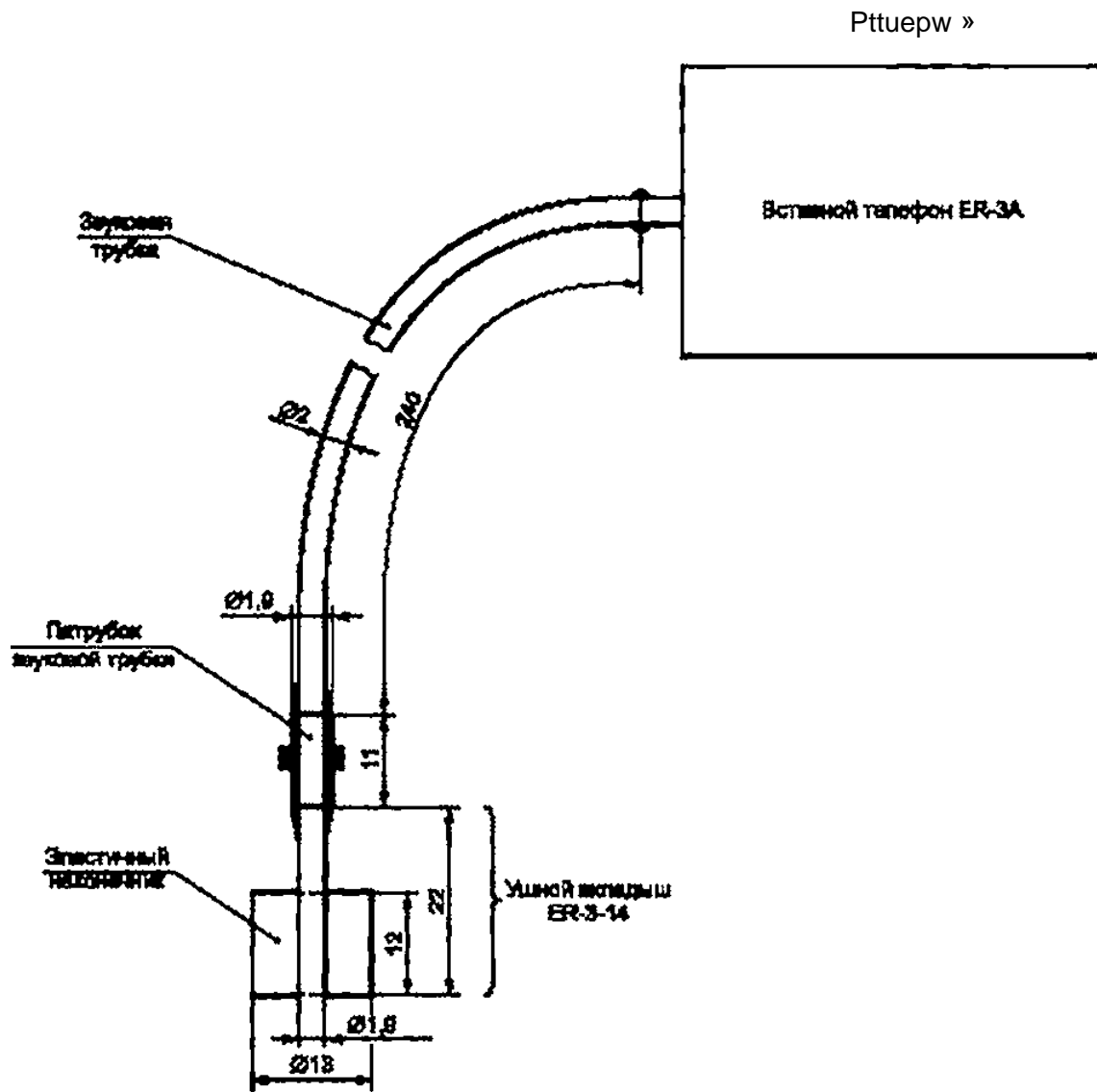
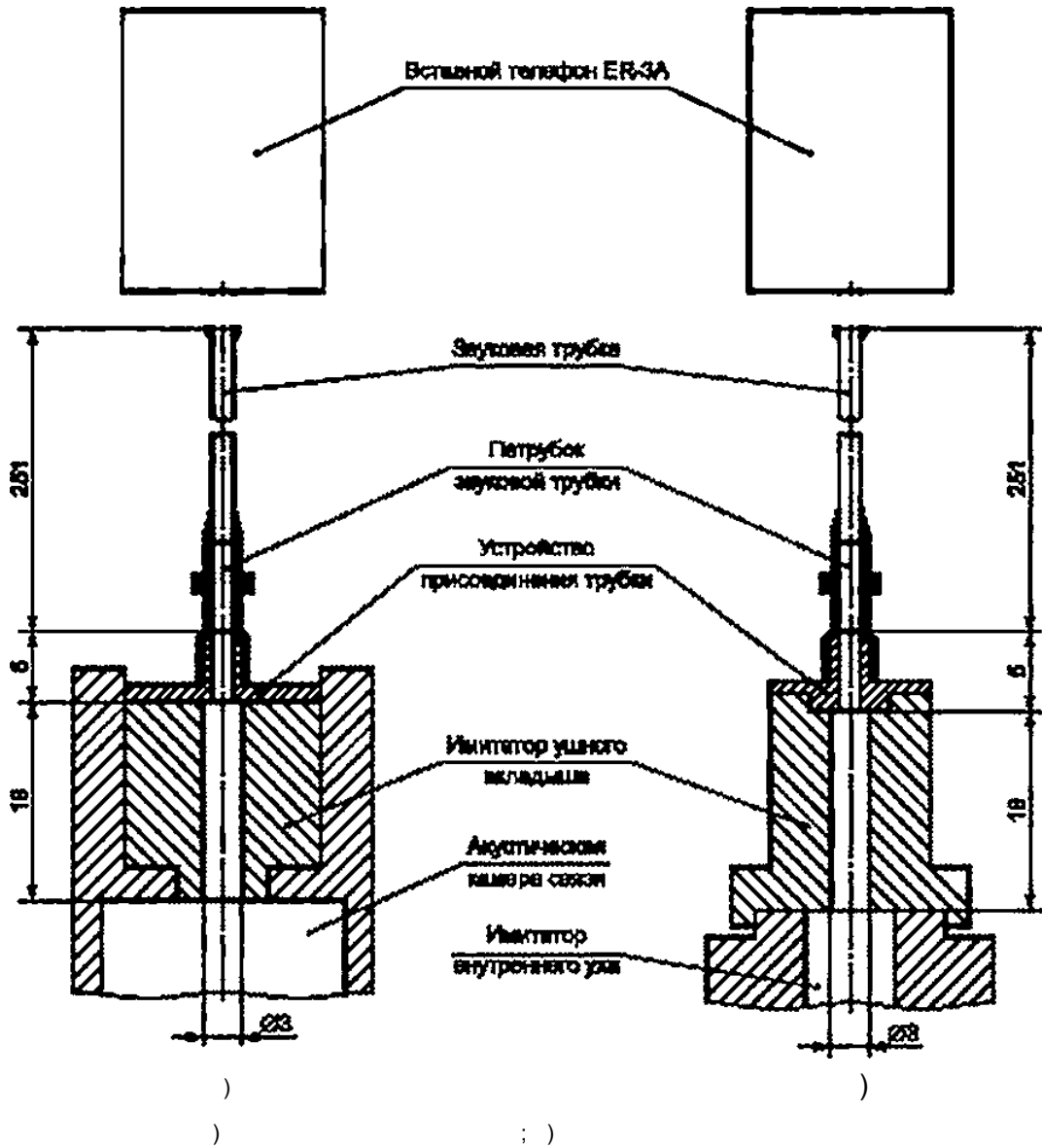


Рисунок 1 — Вставной телефон ER-3A и ушной вкладыш ER-3-14



2—

1 —

60318-4

60318-3.

l.	(20)". £	
125	26.5	28.0
160 >	22.0	24.5
200 >>	16.0	21.5
250	14.0	17.5

1

/.	(20 }*.	
31 5	12.0	15.5
400 ^{2>}	9.0	13.0
SOO	5.5	9.5
630	4.0	7.5
730	2.0	6.0
800 ^{2>}	1.5	5.5
1000	0.0	5.5
1250	2.0	6.5
1500	2.0	9.5
1600 ²¹	2.0	9.5
2000	3.0	11.5
2500	5.0	13.5
3000	3.5	13.0
3150 ¹¹	4.0	13.0
4000	5.5	15.0
5000	5.0	18.5
6000	2.0	16.0
6300	2.0	16.0
8000	0.0	15.5

”
3>

()

43 «Acoustics».

.1.

)

.1 —

	PI	(2)	PI
-	ER- 4		
-	Telephonies -39	Telephonies -39	Beyer 48
,	56	36	48
	26	18	23
.	250. 500. . 2000. 3000. 4000. 8000	125. 250. 500. 1000. 2000. 3000.4000.6000.8000	125. 250. 315. 500. 630. 750. 1000. 1250. 1500. 2000. 2500. 3000. 4000. 5000. 6000. 6300.8000
-	10 4000	4000 15	
,	60318-3 (2)	60318-3 (2); 60318-4 (2)	60318-3 (2): 60318-4 (2)

()

()

.1

389-1:1996		389-1—2011 « 1. »
60318-4:2010	—	•
60318-6:2006	—	•
* — 8 • IDT —		

- (1) WILBER. L.A., KRUGER. 8. and KILLION. M.C. Reference thresholds for the ER3A insert earphone. J. Acoust. Soc. Amer., 83 (2). 1988. pp. 669—676.21
- (2) ARUNGER. S. and KINNEFORS, C. Reference equivalent threshold sound pressure levels for insert earphones. Scand. Audio!., 18.1989. pp. 196—198
- (3) BRINKMANN. K. and RICHTER. U. Reference zero for the calibration of pure tone audiometers equipped with insert earphones. Acustica. 70.1990. pp. 202—207
- (4) ISO 389-4:1994 Acoustics — Reference zero for the calibration of audiometric equipment — Part 4: Reference levels for narrow-band masking noise
- (5) IEC 60318-3:1998 Electroacoustics — Simulators of human head and ear—Part 3: Acoustic coupler for the calibration of supra-aural earphones used in audiometry
- (6) IEC 60318-1:2009 Electroacoustics — Simulators of human head and ear — Part 1: Ear simulator for the measurement of supra-aural and circumaural earphones

534.322.3.08:006.354

13.140

34

: , , , -

08.08.2012.

21.08.2012

0 847(

. . . . 1.40.

.- . 0.90. 94 . . » 716.

« . 123995 . .. 4

«vviv.goitrifo.ru info£gostinfo.iu

« »

« » — . « », 105082 , .. 8.