



Product Technical Specification & Customer Design Guidelines

AirPrime SL808x



SIERRA
WIRELESS

4111992
7.0
September 04, 2012

Important Notice

Due to the nature of wireless communications, transmission and reception of data can never be guaranteed. Data may be delayed, corrupted (i.e., have errors) or be totally lost. Although significant delays or losses of data are rare when wireless devices such as the Sierra Wireless modem are used in a normal manner with a well-constructed network, the Sierra Wireless modem should not be used in situations where failure to transmit or receive data could result in damage of any kind to the user or any other party, including but not limited to personal injury, death, or loss of property. Sierra Wireless accepts no responsibility for damages of any kind resulting from delays or errors in data transmitted or received using the Sierra Wireless modem, or for failure of the Sierra Wireless modem to transmit or receive such data.

Safety and Hazards

Do not operate the Sierra Wireless modem in areas where cellular modems are not advised without proper device certifications. These areas include environments where cellular radio can interfere such as explosive atmospheres, medical equipment, or any other equipment which may be susceptible to any form of radio interference. The Sierra Wireless modem can transmit signals that could interfere with this equipment. Do not operate the Sierra Wireless modem in any aircraft, whether the aircraft is on the ground or in flight. In aircraft, the Sierra Wireless modem **MUST BE POWERED OFF**. When operating, the Sierra Wireless modem can transmit signals that could interfere with various onboard systems.

Note: Some airlines may permit the use of cellular phones while the aircraft is on the ground and the door is open. Sierra Wireless modems may be used at this time.

The driver or operator of any vehicle should not operate the Sierra Wireless modem while in control of a vehicle. Doing so will detract from the driver or operator's control and operation of that vehicle. In some states and provinces, operating such communications devices while in control of a vehicle is an offence.

Limitations of Liability

This manual is provided "as is". Sierra Wireless makes no warranties of any kind, either expressed or implied, including any implied warranties of merchantability, fitness for a particular purpose, or noninfringement. The recipient of the manual shall endorse all risks arising from its use.

The information in this manual is subject to change without notice and does not represent a commitment on the part of Sierra Wireless. SIERRA WIRELESS AND ITS AFFILIATES SPECIFICALLY DISCLAIM LIABILITY FOR ANY AND ALL DIRECT, INDIRECT, SPECIAL, GENERAL, INCIDENTAL, CONSEQUENTIAL, PUNITIVE OR EXEMPLARY DAMAGES INCLUDING, BUT NOT LIMITED TO, LOSS OF PROFITS OR REVENUE OR ANTICIPATED PROFITS OR REVENUE ARISING OUT OF THE USE OR INABILITY TO USE ANY SIERRA WIRELESS PRODUCT, EVEN IF SIERRA WIRELESS AND/OR ITS AFFILIATES HAS BEEN ADVISED OF THE POSSIBILITY OF SUCH DAMAGES OR THEY ARE FORESEEABLE OR FOR CLAIMS BY ANY THIRD PARTY.

Notwithstanding the foregoing, in no event shall Sierra Wireless and/or its affiliates aggregate liability arising under or in connection with the Sierra Wireless product, regardless of the number of events, occurrences, or claims giving rise to liability, be in excess of the price paid by the purchaser for the Sierra Wireless product.

Customer understands that Sierra Wireless is not providing cellular or GPS (including A-GPS) services. These services are provided by a third party and should be purchased directly by the Customer.

SPECIFIC DISCLAIMERS OF LIABILITY: CUSTOMER RECOGNIZES AND ACKNOWLEDGES SIERRA WIRELESS IS NOT RESPONSIBLE FOR AND SHALL NOT BE HELD LIABLE FOR ANY DEFECT OR DEFICIENCY OF ANY KIND OF CELLULAR OR GPS (INCLUDING A-GPS) SERVICES.

Patents

This product may contain technology developed by or for Sierra Wireless Inc.

This product includes technology licensed from QUALCOMM®.



This product is manufactured or sold by Sierra Wireless Inc. or its affiliates under one or more patents licensed from InterDigital Group.

Copyright

© 2012 Sierra Wireless. All rights reserved.

Trademarks

AirCard® is a registered trademark of Sierra Wireless. Sierra Wireless™, AirPrime™, AirLink™, AirVantage™, Watcher™ and the Sierra Wireless logo are trademarks of Sierra Wireless.

 ,  , inSIM®, WAVECOM®, WISMO®, Wireless Microprocessor®, Wireless CPU®, Open AT® are filed or registered trademarks of Sierra Wireless S.A. in France and/or in other countries.

Windows® and Windows Vista® are registered trademarks of Microsoft Corporation.

Macintosh and Mac OS are registered trademarks of Apple Inc., registered in the U.S. and other countries.

QUALCOMM® is a registered trademark of QUALCOMM Incorporated. Used under license.

Other trademarks are the property of the respective owners.

Contact Information

Sales Desk:	Phone:	1-604-232-1488
	Hours:	8:00 AM to 5:00 PM Pacific Time
	E-mail:	sales@sierrawireless.com
Post:	Sierra Wireless 13811 Wireless Way Richmond, BC Canada V6V 3A4	
Technical Support:	support@sierrawireless.com	
RMA Support:	repairs@sierrawireless.com	
Fax:	1-604-231-1109	
Web:	www.sierrawireless.com	

Consult our website for up-to-date product descriptions, documentation, application notes, firmware upgrades, troubleshooting tips, and press releases: www.sierrawireless.com

Document History

Version	Date	Updates
001	December 2010	Created document
002	April 2011	Overall review and update
003	September 2011	Updated number of consecutive resets in: <ul style="list-style-type: none"> • 3.8 SED (Smart Error Detection) • Table 24 USIM Interface Signals^a • Table 50 POWER_ON_N Signal Timing Parameters
4.0	November 28, 2011	Removed section 4.3 (redundant section – reference schematics are available in section 14 Signal Reference Schematics).
		Added: <ul style="list-style-type: none"> • SL8080B information • Section 5.8 External Interrupt • Section 2.2.2 Operating System (Open AT Application Framework Support) • Open AT Application Framework support information throughout the document
	Updated: <ul style="list-style-type: none"> • Figure 8 SL808X Device Pinouts • Table 8 Available Interfaces and Signals • Table 9 SL808X LGA Pad Pin Assignments^a • Section 4.4 Serial Peripheral Interface (SPI) • Table 30 RF Interface Features • Table 34 Audio Interface Features • Table 47 Available Signals • Table 68 1.8 V Connector Pins • Table 71 Averaged Call Mode Data DC Power Consumption^a 	
	December 07, 2011	<ul style="list-style-type: none"> • Added a note in section 5.2.3.1 Signal Timing • Updated Table 70 Averaged Standby DC Power Consumption^a
4.1	January 10, 2012	Updated UART1 data rates in Table 20 UART1 Interface Features
		Updated pin numbers in Table 14 GPIO Pin Descriptions ^a
4.2	January 11, 2012	Added a note after Table 26 USB 2.0 Interface Features
4.3	February 08, 2012	Updated Table 80 Standards Conformity for the SL808X Embedded Module
4.4	February 10, 2012	Updated the document's reference number, and legal boilerplates
5.0	March 01, 2012	Fixed formatting in Table 70 Averaged Standby DC Power Consumption ^a to display all consumption values.
6.0	July 09, 2012	Added section 4.5 I2C Bus
		Updated: <ul style="list-style-type: none"> • Table 9 SL808X LGA Pad Pin Assignments^a • Table 20 UART1 Interface Features • Table 70 Averaged Standby DC Power Consumption^a
7.0	September 04, 2012	Added Band 6 (UMTS800) support for SL8084 and SL8085.



Contents

1. INTRODUCTION	14
1.1. General Features.....	14
1.2. Support Features.....	18
1.3. Support Tools	18
1.4. Accessories	18
1.5. Hardware Development Components.....	18
1.6. Ordering Information.....	18
1.7. Environmental Issues	19
1.7.1. RoHS Directive Compliant	19
1.7.2. Disposing of the Product.....	19
2. FUNCTIONAL SPECIFICATIONS.....	20
2.1. Functional Architecture.....	20
2.1.1. Chipsets	20
2.2. User Interface	21
2.2.1. Extended AT Commands.....	21
2.2.2. Operating System (Open AT Application Framework Support)	21
3. TECHNICAL SPECIFICATIONS	22
3.1. Power Supply	22
3.1.1. Burst Transmission Current Requirements.....	22
3.1.2. Power Input (VCC_3V6).....	23
3.1.3. Start-Up Current.....	23
3.2. Ground Connection	23
3.3. Decoupling of Power Supply Signals	24
3.4. Mechanical Specifications	24
3.4.1. Mechanical Illustrations.....	24
3.5. Labeling	25
3.6. Embedded SIM (eSIM).....	26
3.7. Thermal Considerations	26
3.8. SED (Smart Error Detection).....	26
3.9. Firmware Upgrade.....	26
4. INTERFACES.....	27
4.1. System Design	27
4.1.1. Pin Configuration.....	29
4.1.2. Pin Description	30
4.2. Digital I/O Electrical Information	37
4.2.1. Electrical Characteristics.....	37
4.2.2. Pin Types	37
4.2.3. Signal Reset States.....	38

4.3.	General Purpose Input / Output	38
4.3.1.	Pin Descriptions	39
4.4.	Serial Peripheral Interface (SPI).....	39
4.4.1.	SPI Pin Descriptions	40
4.4.2.	Electrical Characteristics.....	40
4.4.3.	SPI Configuration	40
4.4.4.	SPI Waveforms	41
4.4.5.	Application.....	41
4.5.	I ² C Bus.....	41
4.5.1.	I ² C Pin Description	42
4.5.2.	I ² C Waveforms	42
4.5.3.	Electrical Characteristics.....	42
4.5.4.	Application.....	43
4.6.	Main Serial Interface (UART1)	43
4.6.1.	Available Services.....	44
4.6.2.	UART1 Pin Descriptions	44
4.6.3.	4-Wire Serial Interface	45
4.6.4.	8-Wire Serial Interface	45
4.6.5.	Configure the UART Interface.....	45
4.6.5.1.	Low Power Operation.....	46
4.6.6.	Lock the UART Interface.....	46
4.7.	USIM Interface.....	46
4.7.1.	USIM Pin Descriptions	47
4.7.2.	Application Notes	47
4.7.2.1.	Reference Schematic	47
4.7.2.2.	USIM Socket Pin Description	47
4.8.	USB 2.0 Interface	48
4.8.1.	USB Pin Descriptions.....	48
4.8.2.	Electrical Characteristics.....	49
4.8.3.	USB Configurations.....	49
4.8.4.	Reference Schematics	49
4.8.5.	USB Host Drivers	49
4.8.5.1.	Host Driver Requirements	49
4.9.	RF Interface.....	50
4.9.1.	RF Connections	50
4.9.2.	RF Pin Descriptions	50
4.9.3.	RF Performance.....	51
4.9.4.	GPS Specifications	53
4.9.4.1.	Standalone GPS.....	53
4.9.4.2.	gpsOneXTRA™	53
4.9.4.3.	A-GPS Features	53
4.9.4.4.	Enhanced Navigation 2.0 Feature.....	54
4.9.4.5.	NMEA	54
4.9.4.6.	Software	54
4.9.5.	Antenna Specifications.....	54
4.9.5.1.	Application Notes	54

4.9.6.	Radiated Emissions	55
4.9.7.	Radiated Sensitivity Measurement	55
4.10.	Audio Interfaces.....	55
4.11.	Analog Audio Interface	56
4.11.1.	Pin Descriptions	56
4.11.2.	Microphone Features	57
4.11.2.1.	MIC Microphone Input	57
4.11.3.	Speaker Features.....	60
4.11.3.1.	Speakers Output Power	61
4.11.3.2.	SPK Speaker Output	61
4.11.3.3.	Differential Connection Example	62
4.11.3.4.	Single-Ended Connection Example.....	62
4.11.3.5.	Recommended Characteristics	63
4.11.4.	Supported Voice Features	63
4.12.	Digital Audio Interface (PCM).....	64
4.12.1.	PCM Interface – Short Frame Sync (2.048 MHz)	65
4.12.2.	Auxiliary PCM (Long Frame Sync, 128 kHz)	66
4.13.	JTAG Interface	67
4.14.	Short Message Service (SMS)	68
4.15.	UMTS Radio Access Bearers Supported	68
5.	SIGNALS AND INDICATORS	69
5.1.	Overview.....	69
5.2.	Power ON/OFF Signal (POWER_ON_N).....	69
5.2.1.	Pin Descriptions	70
5.2.2.	Electrical Characteristics.....	70
5.2.3.	Application Notes	70
5.2.3.1.	Signal Timing.....	70
5.3.	Reset Signal (SYSTEM_RESET_N)	71
5.3.1.	Pin Descriptions	72
5.3.2.	Electrical Characteristics.....	72
5.3.3.	Application Notes	72
5.3.3.1.	Signal Timing.....	72
5.3.3.2.	General Notes	73
5.4.	Wake Signal (WAKE_N).....	73
5.4.1.	Pin Descriptions	74
5.4.2.	Electrical Characteristics.....	74
5.5.	Disable Signal (W_DISABLE_N).....	74
5.5.1.	Pin Descriptions	74
5.5.2.	Electrical Characteristics.....	74
5.5.3.	Application Notes	75
5.5.3.1.	Signal Timing.....	75
5.6.	Buzzer Output (BUZZER_N)	75
5.6.1.	Pin Descriptions	76
5.6.2.	Electrical Characteristics.....	76

5.7.	Flash LED (LED_FLASH).....	76
5.7.1.	Pin Descriptions	76
5.7.2.	Electrical Characteristics.....	77
5.8.	External Interrupt.....	77
5.8.1.	Pin Description	77
5.8.2.	Electrical Characteristics.....	77
5.8.3.	Application Notes	78
5.9.	Power Rail (VREF_1V8).....	78
5.9.1.	Pin Descriptions	78
5.9.2.	Electrical Characteristics.....	79
5.9.3.	Application Notes	80
5.9.3.1.	VREF_1V8 – 1.8 V Logic Reference.....	80
5.10.	Reserved	80
6.	POWER CONSUMPTION	81
6.1.	Power States	83
6.1.1.	Power State Transitions	84
7.	NETWORK TECHNOLOGY SPECIFICATIONS	85
7.1.	UMTS WCDMA FDD Specifications.....	85
7.2.	Supported Specifications.....	86
7.2.1.	UMTS (WCDMA) / GSM Specifications	91
8.	DESIGN GUIDELINES	94
8.1.	General Rules and Constraints	94
8.2.	PCB Layout Recommendations	94
8.3.	Power Supply	94
8.4.	Antenna	94
8.5.	PCB Specifications for the Application Board	95
8.6.	Recommended PCB Landing Pattern	95
8.7.	Routing Constraints	95
8.7.1.	Power Supply	95
8.7.1.1.	Ground Plane and Shielding Connection	96
8.7.2.	SIM Interface.....	96
8.7.3.	Audio Circuit.....	96
8.7.4.	RF Circuit	97
8.8.	EMC and ESD Recommendations	98
8.9.	Mechanical Integration	99
8.10.	Operating System Upgrade.....	99
9.	EMBEDDED TESTABILITY	100
9.1.	Testing Assistance Provided by Sierra Wireless.....	100
9.2.	Integration Requirements	100
9.3.	IOT / Operator	100
9.4.	Module Testing Recommendations.....	100

9.5.	Serial Interface Access	101
9.6.	RF Output Accessibility	102
10.	CERTIFICATION COMPLIANCE AND RECOMMENDED STANDARDS	103
10.1.	UMTS Compliance Acceptance and Certification	103
10.2.	Certification Compliance.....	103
10.3.	Applicable Standards.....	104
10.3.1.	Important Notice	104
10.3.2.	Safety and Hazards.....	104
10.3.3.	Important Compliance Information for North American Users	104
10.3.4.	EU Regulatory Conformity	105
11.	CUSTOMIZATION	106
12.	SAFETY RECOMMENDATIONS	107
12.1.	RF Safety.....	107
12.1.1.	General.....	107
12.1.2.	Exposure to RF Energy.....	107
12.1.3.	Efficient Terminal Operation.....	107
12.1.4.	Antenna Care and Replacement.....	108
12.2.	General Safety.....	108
12.2.1.	Driving	108
12.2.2.	Electronic Devices.....	108
12.2.3.	Vehicle Electronic Equipment	108
12.2.4.	Medical Electronic Equipment.....	108
12.2.5.	Aircraft.....	109
12.2.6.	Children	109
12.2.7.	Blasting Areas	109
12.2.8.	Potentially Explosive Atmospheres	109
13.	CONNECTOR AND PERIPHERAL DEVICE REFERENCES	110
13.1.	JTAG Connector	110
14.	SIGNAL REFERENCE SCHEMATICS.....	111
15.	REFERENCES	112
15.1.	Web Site Support	112
15.2.	Reference Documents.....	112
15.2.1.	Sierra Wireless Documents.....	112
15.2.2.	Industry / Other Documents	112
15.3.	Abbreviations / Acronyms.....	113



List of Figures

Figure 1.	Functional Architecture.....	20
Figure 2.	Exploded View.....	24
Figure 3.	Dimensioned View.....	25
Figure 4.	Unit Label.....	25
Figure 5.	SL8080/80B/81 System Block.....	27
Figure 6.	SL8082/83 System Block.....	28
Figure 7.	SL8084/85 System Block.....	28
Figure 8.	SL808X Device Pinouts.....	29
Figure 9.	SPI Timing Diagram (Mode 0, Master, 4wires).....	41
Figure 10.	Example of a 4-wire SPI Bus Application.....	41
Figure 11.	I ² C Timing Diagram; Master Mode.....	42
Figure 12.	Example of I ² C Bus Application.....	43
Figure 13.	Example – MIC Differential Connection with LC Filter.....	58
Figure 14.	Example – MIC Differential Connection without an LC Filter.....	58
Figure 15.	Example – MIC Single-Ended Connection with LC Filter.....	59
Figure 16.	Example – MIC Single-Ended Connection without an LC Filter.....	60
Figure 17.	SPK Equivalent Circuit.....	61
Figure 18.	Example – SPK Differential Connection.....	62
Figure 19.	Example – SPK Single-Ended Connection.....	62
Figure 20.	Timing Diagram – Short Frame Sync (PCM_SYNC).....	65
Figure 21.	Timing Diagram – PCM_CODEC to SL808X.....	65
Figure 22.	Timing Diagram – SL808X to External PCM_CODEC.....	65
Figure 23.	Timing Diagram – Long Frame Sync (AUX_PCM_SYNC).....	66
Figure 24.	Timing Diagram – AUX_PCM_CODEC to SL808X.....	66
Figure 25.	Timing Diagram – SL808X to AUX_PCM_CODEC.....	67
Figure 26.	POWER_ON_N Signal Timing.....	70
Figure 27.	SYSTEM_RESET_N Signal Timing.....	72
Figure 28.	W_DISABLE_N Signal Timing.....	75
Figure 29.	Example of INT0 Driven by an Open Collector.....	78
Figure 30.	Automatic ('Triggered') Power State Transitions.....	84
Figure 31.	PCB Structure Example for the Application Board.....	95
Figure 32.	Power Supply Routing Example.....	95
Figure 33.	AppCad Screenshot for MicroStrip Design.....	97
Figure 34.	RF Routing Examples.....	97
Figure 35.	Recommended Thermocouple Location.....	101
Figure 36.	Main Serial Interface (UART1).....	101



List of Tables

Table 1.	Supported Bands/Connectivity	14
Table 2.	Modern Features	14
Table 3.	Power and Ground Specifications	22
Table 4.	Power Supply Requirements	22
Table 5.	Radio Burst Rates – Connected Mode.....	23
Table 6.	Start-Up Current Peak Range	23
Table 7.	Mechanical Specifications	24
Table 8.	Available Interfaces and Signals	27
Table 9.	SL808X LGA Pad Pin Assignments	30
Table 10.	Electrical Characteristics – 1.8V Type (1V8) Digital I/O.....	37
Table 11.	Pin Type Codes	37
Table 12.	Reset State Definition.....	38
Table 13.	GPIO Interface Features	38
Table 14.	GPIO Pin Descriptions	39
Table 15.	SPI Interface Signals.....	40
Table 16.	SPI Interface Electrical Characteristics	40
Table 17.	SPI Bus Configuration	40
Table 18.	I ² C Pin Descriptions.....	42
Table 19.	I ² C Bus Interface Electrical Characteristics.....	42
Table 20.	UART1 Interface Features	43
Table 21.	Serial Port High-Speed UART1 Interface.....	44
Table 22.	Duplexed (Reconfigured) UART Interface Signal Groups	45
Table 23.	USIM Interface Features	46
Table 24.	USIM Interface Signals.....	47
Table 25.	USIM Socket Pin Descriptions	47
Table 26.	USB 2.0 Interface Features.....	48
Table 27.	USB Interface Pins	48
Table 28.	USB Interface Electrical Characteristics	49
Table 29.	Supported USB Configurations	49
Table 30.	RF Interface Features	50
Table 31.	RF Interface Pins.....	50
Table 32.	Band Support, Conducted Tx Power, and Conducted Rx Sensitivity	51
Table 33.	Main Antenna (ANT_PRI) Specification	54
Table 34.	Audio Interface Features	56
Table 35.	Analog Audio Interface Connections	56
Table 36.	MIC Input Electrical Characteristics	57
Table 37.	Recommended Components for a MIC Differential Connection	59

Table 38.	Recommended Components for a MIC Single-Ended Connection.....	60
Table 39.	Speaker Information	60
Table 40.	SPK (Receive) Path Characteristics.....	61
Table 41.	Supported Voice Features.....	63
Table 42.	Supported Supplementary Services.....	63
Table 43.	PCM Digital Audio Interface Connections	64
Table 44.	PCM_CODEC Short Frame Sync (2.048 MHz) Timing Parameters	65
Table 45.	AUX_PCM_CODEC Timing Parameters	67
Table 46.	SMS Features.....	68
Table 47.	Available Signals	69
Table 48.	POWER_ON_N Signal Features.....	69
Table 49.	ON/~OFF Signal Pin Description	70
Table 50.	POWER_ON_N Signal Timing Parameters	70
Table 51.	Reset Signal Features	71
Table 52.	Reset Signal Pin Description.....	72
Table 53.	Reset Signal Electrical Characteristics	72
Table 54.	SYSTEM_RESET_N Signal Timing Parameters	73
Table 55.	Reset Settings	73
Table 56.	Wake Signal Features	73
Table 57.	Wake Signal Pin Description	74
Table 58.	Wireless Disable Signal Features	74
Table 59.	Wireless Disable Signal Pin Description	74
Table 60.	W_DISABLE_N Signal Timing Parameters.....	75
Table 61.	Buzzer Signal Features	75
Table 62.	Buzzer Output Pin Description	76
Table 63.	LED Signal Features	76
Table 64.	LED_FLASH Pin Description.....	76
Table 65.	LED_FLASH Signal Electrical Characteristics	77
Table 66.	External Interrupt Pin Descriptions.....	77
Table 67.	VREF_1V8 Pin Descriptions	78
Table 68.	1.8 V Connector Pins	78
Table 69.	VREF_1V8 Signal Electrical Characteristics.....	79
Table 70.	Averaged Standby DC Power Consumption	81
Table 71.	Averaged Call Mode Data DC Power Consumption	81
Table 72.	Miscellaneous DC Power Consumption	82
Table 73.	Supported GPRS / EDGE Power Classes	82
Table 74.	Supported SL808X Power States.....	83
Table 75.	Power State Transitions (including voltage / temperature trigger levels).....	84
Table 76.	Supported WCDMA FDD Specifications	85
Table 77.	Supported GSM / GPRS Specifications	87

Table 78.	UMTS (WCDMA) / GSM Specifications	91
Table 79.	ESD Specifications	98
Table 80.	Standards Conformity for the SL808X Embedded Module	103
Table 81.	Customizable Features	106
Table 82.	List of Abbreviations / Acronyms	113



1. Introduction

The AirPrime SL808X Embedded Module¹ is a 74-pin soldered-down module. Its wireless UMTS-based modem provides (as listed in Table 1 Supported Bands/Connectivity) data connectivity on HSDPA, WCDMA, EDGE, and GPRS networks, and, for specific devices, GPS and voice functionality.

As an option, the AirPrime SL808X Embedded Module supports the Open AT Application Framework, the world's most comprehensive cellular development environment which allows embedded standard ANSI C applications to be natively executed directly on the embedded module. For more information about the Open AT Application Framework, refer to the references listed in section 15 References.

Note that this document only covers the AirPrime SL808X Embedded Module and does not cover the programmable capabilities available through the Open AT Application Framework.

Table 1. Supported Bands/Connectivity

	SL8080	SL8080B	SL8081	SL8082	SL8083	SL8084	SL8085
GSM850 EGSM900 DCS1800 PCS1900	✓	✓	✓	✓	✓	✓	✓
Band 1 (UMTS2100)				✓	✓	✓	✓
Band 2 (UMTS1900)	✓	✓	✓				
Band 5 (UMTS850)	✓	✓	✓			✓	✓
Band 6 (UMTS800)						✓	✓
Band 8 (UMTS900)				✓	✓		
GPS (1575.42)	✓			✓		✓	
Voice	✓	✓		✓		✓	

1.1. General Features

The following table lists several AirPrime SL808X Embedded Module features.

Table 2. Modern Features

Feature	Description
Physical	<ul style="list-style-type: none">• Small form factor (74-pin solderable pad LGA)—25mm x 30mm x 2.35mm (nominal)• Complete body shielding• Embedded SIM available (SIM integrated at component level)• RF connection pads—Tx/Rx (all modems) and GPS (Voice/GPS modems only)• Baseband signals connection
Electrical	<ul style="list-style-type: none">• Single supply voltage (VCC)—3.3V–4.3V• Complete body shielding—No additional shielding required

¹ SL808X—SL8080/SL8080B/SL8081/SL8082/SL8083/SL8084/SL8085

Feature	Description
SMS	<ul style="list-style-type: none"> • Send and receive (mobile originate and mobile terminate) <ul style="list-style-type: none"> ▪ Mobile-originated / terminated over CS and PS channels ▪ Mobile-originated SMS over PS falls back to CS if PS service is not available, or there is a PS network failure. • New message notification • Message sorting • Multiple recipients • Return voice call • Save contact details • Mobile-originated SMS e-mail • Mobile-originated / terminated SMS concatenation • Mobile-originated SMS e-mail concatenation • Receipt notification
Application Interface	<ul style="list-style-type: none"> • NDIS NIC interface support (Windows XP, Windows Vista, Windows 7, Windows CE^a, Linux) • Multiple non-multiplexed USB channel support • Dial-up networking • USB selective suspend to maximize power savings • AT command interface—(non-voice) 27.007 standard, plus proprietary extended AT commands • CnS—Sierra Wireless' proprietary Control and Status host interface protocol • Software Development Kits (SDK) including APIs (Application Program Interfaces) and drivers (core, device) for Windows, Windows CE, and Linux • Optional eSIM support
Phonebook	Supports Release 99 phone book features
Packet Mode	<ul style="list-style-type: none"> • Dual-mode UMTS (WCDMA) / HSDPA / EDGE / GPRS operation • GPRS class B, multislot class 10 operation—Supports CS1–CS4 coding schemes • EDGE multislot class 12 operation—Supports MCS1–MCS9 coding schemes • UMTS (WCDMA) R99 data rates—384 kbps downlink, 384 kbps uplink • HSDPA <ul style="list-style-type: none"> ▪ Category 5/6 data rate—3.6 Mbps (peak rate) ▪ Category 12 data rate—1.8 Mbps • Circuit-switched data bearers—64 kbps (maximum) uplink and downlink

Feature	Description
Connectivity/GSM	<ul style="list-style-type: none"> • Multiple (up to 16) cellular packet data profiles • Traditional modem COM port support for DUN, CSD, and AT commands (concurrent with NDIS) • Suspend / Resume • Sleep mode for minimum idle power draw • SIM application toolkit with proactive SIM commands • Enhanced Operator Name String (EONS) • Profile list. Typical carrier profiles are available in a drop-down list in Watcher; the user can select a profile rather than enter all the parameters. • Automatic GPRS attach at power-up • GPRS detach • Combined GPRS / IMSI detach; MS-initiated and network-initiated detach • Mobile-originated PDP context activation/deactivation • Support QoS profile <ul style="list-style-type: none"> ▪ Release 99 QoS negotiation—Background, Interactive, and Streaming ▪ Release 97—Precedence Class, Reliability Class, Delay Class, Peak Throughput, Mean Throughput • Static and Dynamic IP address. The network may assign a fixed IP address or dynamically assign one using DHCP (Dynamic Host Configuration Protocol). • PAP and CHAP support • PDP context type (IPv4). IP Packet Data Protocol context • RFC1144 TCP/IP header compression • Interaction with existing GSM services (MO/MT SMS voice calls) while: <ul style="list-style-type: none"> • GPRS is attached, or • In a GPRS data session (class B GPRS suspend / resume procedures) • Support for EAP-SIM authentication and PC / SC. EAP-SIM is available through: <ul style="list-style-type: none"> ▪ The API ▪ AT commands ▪ The PC / SC interface
Voice ^b	<p>Supports:</p> <ul style="list-style-type: none"> • All GSM vocoders, Enhanced Full Rate (EFR), Full Rate (FR), and WCDMA Adaptive Multirate (AMR) encoders • MO and MT calling • Echo cancellation and noise reduction • Emergency calls (112, 110, 911, etc.) • Incoming call notification • TTY/TDD compatibility through microphone/speaker connections using the audio interface
Supplementary Services ^b	<ul style="list-style-type: none"> • Call Barring • Call Forwarding • Call Hold • Caller ID • Call Waiting • Multi-party service • USSD

Feature	Description
GPS ^c	<p>Provides:</p> <ul style="list-style-type: none"> • Standalone GPS functionality • gpsOneXTRA™ • A-GPS features • NMEA support <hr/> <p><i>Note:</i> GPS specifications are preliminary targets that are subject to change without notice. Actual GPS functionality is dependent on the firmware version, and on module configuration.</p>
Network Selection	<ul style="list-style-type: none"> • Network selection procedures described in 3G 22.011, R5 (June 2005), 3G 23.122 (June 2005), and 3G 43.022, R4 • RRC connection reject message to redirect from a 3G system to a 2G system, according to 25.331, R5 (June 2004) • A CPHS Customer Service Profile-like feature [PLMN Mode bit] on a USIM/SIM that hides network selection related menus • Initial HPLMN scan at two minutes after power on • An HPLMN rescan irrespective of the serving MCC • Selective disabling of any 2G or 3G frequency band • Equivalent PLMN • Network selection generally within 30 seconds of power up • Enhanced network selection (ENS)
RF	<ul style="list-style-type: none"> • Quad-band GSM/GPRS/EDGE (850 MHz, 900 MHz, 1800 MHz, 1900 MHz) • Dual-band UMTS WCDMA FDD <ul style="list-style-type: none"> ▪ SL8080/SL8080B/SL8081: 850 MHz, 1900 MHz ▪ SL8082/SL8083: 900 MHz, 2100 MHz • Tri-band UMTS WCDMA FDD <ul style="list-style-type: none"> ▪ SL8084/SL8085: 800 MHz, 850 MHz, 2100 MHz • GPS (1575.42 MHz) (SL8080/82/84 only)
Environmental	<p>Operating temperature ranges</p> <ul style="list-style-type: none"> • Data-only devices: <ul style="list-style-type: none"> ▪ Class A (3GPP compliant): -20°C to +60°C ▪ Class B (operational, non-3GPP compliant): -30°C to +75°C • Voice-capable devices: <ul style="list-style-type: none"> ▪ Class A (3GPP compliant): -30°C to +70°C ▪ Class B (operational, non-3GPP compliant): -40°C to +85°C
Interfaces	<ul style="list-style-type: none"> • 1.8 V digital section • 3 V/1.8 V SIM interface • Serial (UART1) • Audio—Analog and digital (PCM) • SIM/Embedded SIM • USB 2.0 slave
Operating System	Full GSM or GSM/GPRS/EGPRS operating system stack

- a. Contact Sierra Wireless for platform-specific Windows CE support details.
- b. Voice/Supplementary services on SL8080/SL8080B/SL8082/SL8084
- c. GPS on SL8080/SL8082/SL8084

1.2. Support Features

The SL808X offers the following support feature:

- Enabling software (drivers, SDK, etc.): Windows, Windows CE, Linux

1.3. Support Tools

The SL808X is compatible with the following support tools from Sierra Wireless and authorized third parties:

- Sierra Wireless Watcher connection manager (available for Windows and Mac operating systems)
- QXDM from Qualcomm

Note: These tools do not operate as part of the Open AT Application Framework.

1.4. Accessories

The Universal SL Dev Kit includes:

- Embedded Modem Interface Kit
- Documentation suite
- USB cable
- Serial cable
- Power supply
- Quad-band (GSM/UMTS) antenna
- Handset

1.5. Hardware Development Components

Sierra Wireless manufactures two hardware development components to facilitate the hardware integration process:

- AirPrime SL Socket Board—Adapter board onto which an SL module is soldered. This board may be used as a stand-alone platform for basic hardware development. See section 14 Signal Reference Schematics for details.
- AirPrime SL Development Kit—Hardware development platform that, when integrated with the socket-up board, provides access to all of the interfaces supported by the SL module.

For instructions on using the SL Development Kit, see document [1] Universal SL Development Kit User Guide.

1.6. Ordering Information

To order, contact the Sierra Wireless Sales Desk at +1 (604) 232-1488 between 8 AM and 5 PM Pacific Time.

1.7. Environmental Issues

1.7.1. RoHS Directive Compliant

The AirPrime SL808X Embedded Module is compliant with RoHS Directive 2002/95/EC which sets limits for the use of certain restricted hazardous substances. This directive states that "from 1st July 2006, new electrical and electronic equipment put on the market does not contain lead, mercury, cadmium, hexavalent chromium, polybrominated biphenyls (PBB) or polybrominated diphenyl ethers (PBDE)".



1.7.2. Disposing of the Product

This electronic product is subject to the EU Directive 2002/96/EC for Waste Electrical and Electronic Equipment (WEEE). As such, this product must not be disposed off at a municipal waste collection point. Please refer to local regulations for directions on how to dispose of this product in an environmental friendly manner.





2. Functional Specifications

2.1. Functional Architecture

The global architecture of the AirPrime SL808X Embedded Module is described in the following figure.

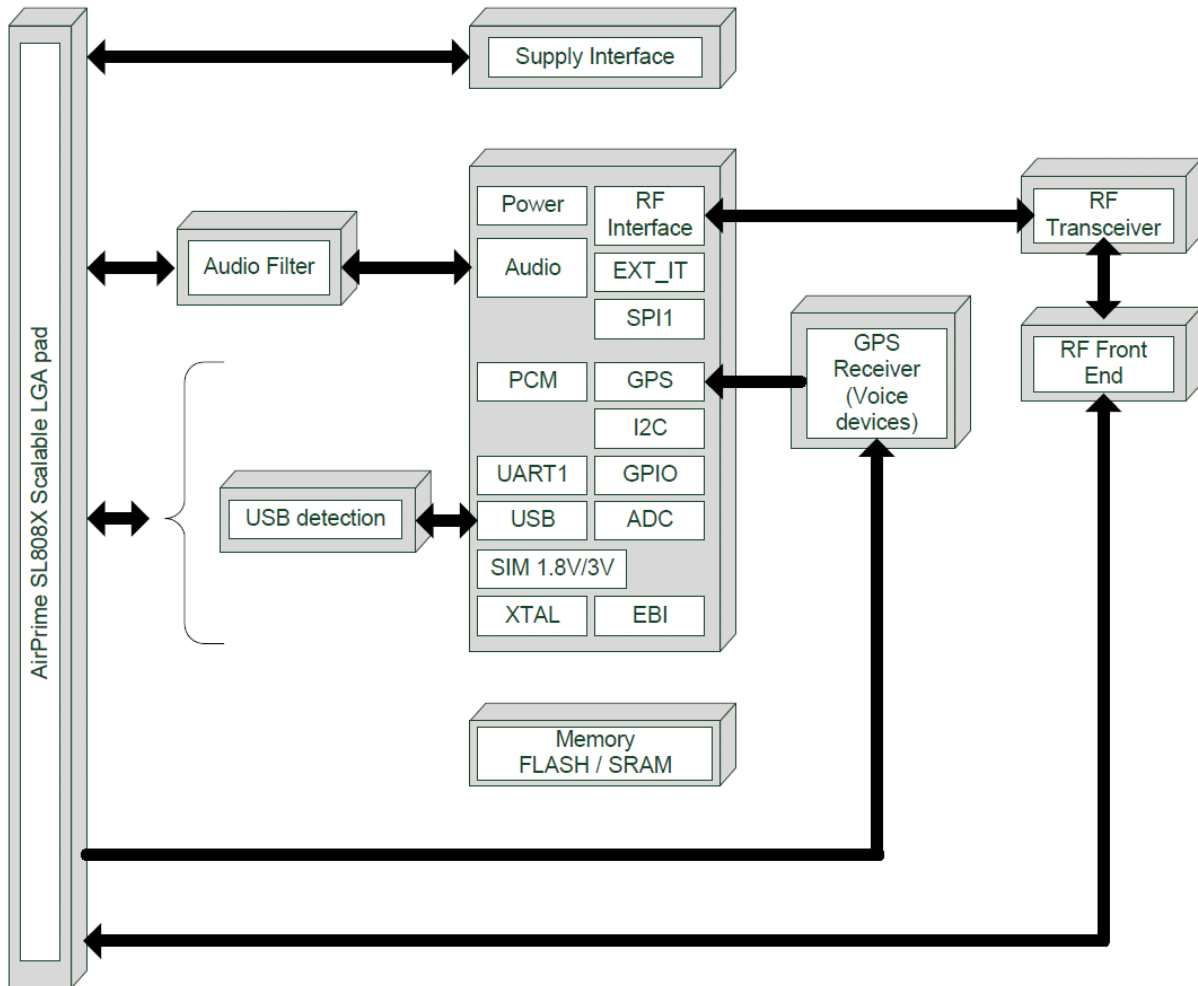


Figure 1. Functional Architecture

2.1.1. Chipsets

SL808X modems are based on Qualcomm single chip solutions (integrated baseband processor, RF transceiver, and power management IC):

- Voice modems: SL8080/80B/82/84—QSC6270
- Data modems: SL8081/83/85—MDM6270

2.2. User Interface

2.2.1. Extended AT Commands

Several proprietary AT commands are available for AirPrime embedded modules to use in hardware integration design and testing (these commands are NOT intended for use by end users). For lists of all available commands and descriptions of their functionality, refer to documents [2] AirCard/AirPrime UMTS Devices Supported AT Command Reference and [3] AirPrime MC8xxx Embedded Modules Extended AT Command Reference.

2.2.2. Operating System (Open AT Application Framework Support)

Because the AirPrime SL808X Embedded Module supports the Open AT Application Framework, customers can embed their own applications with the AirPrime SL808x and turn the AirPrime SL808X embedded module into a solution for their specific market need.

The operating system allows for the AirPrime SL808X Embedded Module to be controlled by AT commands. However, some interfaces in the AirPrime SL808X Embedded Module may still not be available even with AT command control as these interfaces are dependent on the peripheral devices connected to the AirPrime SL808X Embedded Module.

3. Technical Specifications

3.1. Power Supply

Power is provided to the SL808X through power and ground pins as detailed in the following table.

Table 3. Power and Ground Specifications

Signal/Pin Name	Pins	Type	Specification	Parameter	Min	Typ	Max	Units
VCC_3V6 ^a	42, 44	V	Voltage range	VCC	3.30	3.60	4.30	V
			Ripple voltage (U_{ripp})				100	mVpp
VREF_1V8	10	V	Maximum supply current = 1 mA		1.62	1.80	1.98	V
GND	19, 20, 21, 23, 28, 30, 35, 37, 38, 39, 52	V			-	0	-	V

a. Host-provided input voltage should provide 3 A instantaneous (lasting 5 ms). See Table 71 Averaged Call Mode Data DC Power Consumption for band-specific continuous current requirements.

The host device must provide power to the AirPrime soldered-down module over pins 42 and 44 (VCC_3V6) as detailed in the following table.

Table 4. Power Supply Requirements

Requirement Type	Value
Power supply	3.6 V (nominal)
Voltage range (Vmin–Vmax)	3.3–4.3 V
Current (instantaneous (≤ 5 ms))	3 A
Current (continuous)	See Table 71 Averaged Call Mode Data DC Power Consumption ^a for band-specific values.
Power input capacitor(s)	<ul style="list-style-type: none"> Add capacitance to host power rail ($\geq 100 \mu\text{F}$) to keep module operational with V_{in} in range. Additional capacitance may be required if the host cannot meet the module's current requirements. Conditioning capacitor (1 μF, 0.1 μF, 10 nF and 1 nF) recommended close to the power input for decoupling.

Note: The host must provide safe and continuous power to the module; the module does NOT have protection circuits to guard against electrical overstress.

3.1.1. Burst Transmission Current Requirements

The power supply must be able to deliver high current peaks in a short time due to the burst transmission nature of GSM. During these peaks, the ripple (U_{ripp}) on the supply voltage must not exceed the level noted in Table 3 Power and Ground Specifications.

The following table describes radio burst rates in connected mode. For detailed power consumption figures, see Table 71 Averaged Call Mode Data DC Power Consumption^a for band-specific values.

Table 5. Radio Burst Rates – Connected Mode

GSM/GPRS Multislot Class	RF Power Amplifier Current	Slot Duration	Period	Rising Time
Class 10 ^a	2.0 A peak	577 μ s	4.615 ms	10 μ s
Class 12 ^b				

a. Up to 2 TX slots. Total TX duration for 2 slots = 1154 μ s.

b. Up to 4 TX slots. Total TX duration for 4 slots = 2308 μ s.

3.1.2. Power Input (VCC_3V6)

An external power supply uses the VCC_3V6 pins to:

- Supply the AirPrime SL808X Embedded Module.
- Directly supply the RF components with 3.6 V.
 - It is essential to keep the voltage ripple to a minimum at this connection to avoid any phase error or spectrum modulation degradation.
 - An inadequate power supply can significantly affect RF performance (TX power, modulation spectrum, EMC performance, spurious emission, frequency error, etc.).
- Provide reference voltage VREF_1V8 (through several internal regulators) for the baseband signals. The host should draw less than 1 mA on this rail.

When the AirPrime SL808X Embedded Module is supplied with a battery, the total impedance (battery + protections + PCB) should be such that the supply will be ≥ 3.3 V during GSM burst mode operation (drawing a maximum peak current of 2.2 A for 577 μ s (one slot) or 1154 μ s (two slots) TX).

3.1.3. Start-Up Current

During the first second following Power ON, a current peak occurs. This current peak ($t_{Startup}$) has a duration of about 165 ms (typical).

The following table indicates the expected peak current range.

Table 6. Start-Up Current Peak Range

Current Peak at Ambient Temperature (25°C)	VCC_3V6 _{min} (3.3V)	VCC_3V6 _{typ} (3.6V)	VCC_3V6 _{max} (4.3V)
$t_{Startup}$	150 mA	140 mA	15 mA

3.2. Ground Connection

The AirPrime SL808X Embedded Module shielding case is the grounding. The ground must be connected on the motherboard through a complete layer on the PCB.

The ground connection is made by soldering the LGA ground pins and rectangular ground pad to the ground plane of the application board. For more information about ground connection, see section 8.7.1.1 Ground Plane and Shielding Connection.

3.3. Decoupling of Power Supply Signals

Although the AirPrime SL808X Embedded Module has embedded decoupling capacitors on the VCC_3V6 lines, additional decoupling may be required:

- EMI/RFI issues—Parallel 33 pF capacitors close to the embedded module.
- TDMA noise (217 Hz)—Low frequency decoupling capacitors (22–100 μF) can be used to reduce noise.

3.4. Mechanical Specifications

This section describes mechanical specifications for the AirPrime SL808X Embedded Module. For additional mechanical and environmental specifications, refer to document [5] Sierra Wireless Reliability Specification.

Table 7. Mechanical Specifications

Specification	Details
Form factor	The SL808X is a 74-pin LGA soldered-down module with a two-piece shielded case.
Dimensions (nominal)	Length: 30 mm Width: 25 mm Thickness: 2.40 mm (nominal) Weight: approximately 3.5 g

3.4.1. Mechanical Illustrations

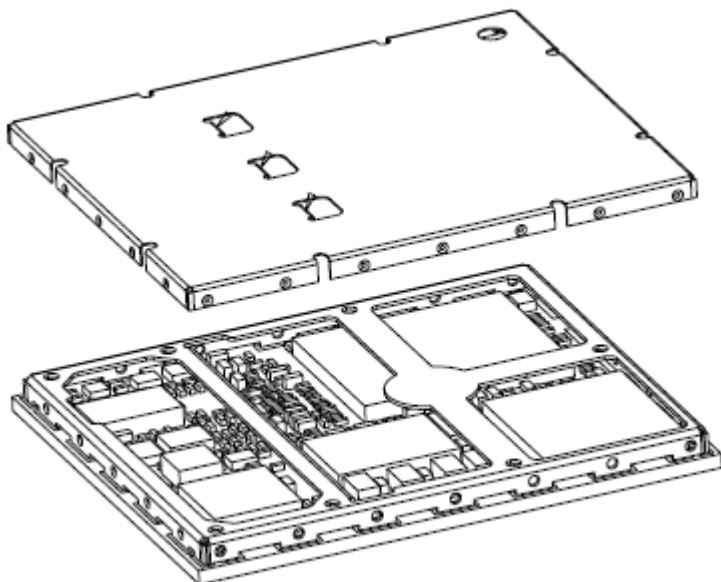


Figure 2. Exploded View

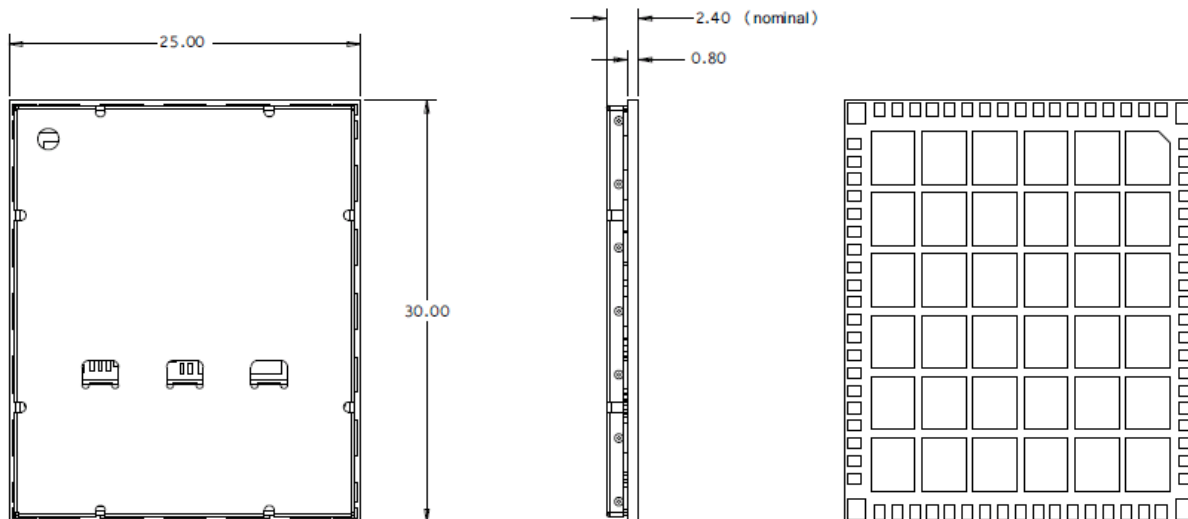


Figure 3. Dimensioned View

3.5. Labeling



Figure 4. Unit Label

Note: *The displayed label is an example only. The production label will vary by SKU.*

The SL808X label is non-removable and contains:

- Sierra Wireless logo and product name. (Figure 4 Unit Label uses 'X' to represent the actual product name. For example, SL8080, SL8081, SL8082, etc.)
- Factory Serial Number (FSN) and IMEI number shown in alphanumeric and Data Matrix (ECC200) 2D barcode formats
- SKU number (when required)
- Manufacturing date code (incorporated into FSN)
- Licensed vendor logo when required
- Device-specific regulatory certification marks (for example, FCC/IC, CE, A-Tick, CMITTID, etc.)

Note: *The SL808X supports OEM partner specific label requirements.*

3.6. Embedded SIM (eSIM)

The AirPrime SL808X Embedded Module is available with an embedded SIM solution that eliminates design issues related to working with a consumer-style SIM card, including:

- Improved environmental performance—The embedded SIM operates in extreme temperatures, and has higher vibration and humidity tolerances.
- Minimized size—The embedded SIM eliminates the requirements of a SIM card holder and plastic SIM, and the module is the same size with or without the embedded SIM.
- Service provider choice—You can provision the SIM with your preferred service provider or carrier, or take advantage of Sierra Wireless' existing carrier partnerships.
- Subscription portability and security—An integrated switch allows developers to provide the flexibility of switching between the embedded SIM and an external SIM as required.
- Simplified logistics—The embedded SIM does not need to be tracked, stored, or activated (as would a physical SIM card).

3.7. Thermal Considerations

When transmitting, the AirPrime SL808X Embedded Module can generate significant amounts of heat (due to the internal Power Amplifier) that must be dissipated in the host device for safety and performance reasons.

The amount of thermal dissipation required depends on the following factors:

- Supply voltage—Maximum power dissipation for these modules can be up to 2.0 W at voltage supply limits.
- Usage—Typical power dissipation values depend on the location within the host, amount of data transferred, etc.

You can enhance heat dissipation by:

- Maximizing airflow over/around the module
- Locating the module away from other hot components

You can use !PCTEMP or !GSTATUS to return the module's current temperature. See document [2] AirCard/AirPrime UMTS Devices Supported AT Command Reference for details.

3.8. SED (Smart Error Detection)

The AirPrime SL808X Embedded Module modules use a form of SED to track premature modem resets. In such cases, the module automatically forces a pause in boot-and-hold mode at power-on to accept an expected firmware download to resolve the problem.

1. Module tracks consecutive resets within 30 seconds of power-on.
2. After six (6) consecutive resets, the module waits in boot-and-hold mode for a firmware download to resolve the power-cycle problem.

3.9. Firmware Upgrade

Firmware upgrades are downloaded to the modem over the USB or UART interfaces. Contact your Sierra Wireless account representative for assistance.

4. Interfaces

4.1. System Design

This chapter describes the AirPrime SL808X Embedded Module's LGA pad configuration (see section 4.1.1 Pin Configuration) and supported interfaces (Table 8 Available Interfaces and Signals).

Table 8. Available Interfaces and Signals

Name	AT Command Support	Open AT Interface
General Purpose Input / Output	✓	✓
Main Serial Interface (UART1)	✓	✓
USIM Interface	✓	✓
USB 2.0 Interface	✓	✓
RF Interface		
Analog Audio Interface	✓	✓
Digital Audio Interface (PCM)	✓	✓
JTAG Interface		
Serial Peripheral Interface (SPI) ^a		✓

a. Only available with the Open AT Application Framework.

The SL808X has two main interface areas—the host I/O perimeter I/O ports (pins) and the RF ports. These interface areas are identified in the following system block diagrams: Figure 5 (SL8080/80B/81), Figure 6 (SL8082/83), and Figure 7 (SL8084/85).

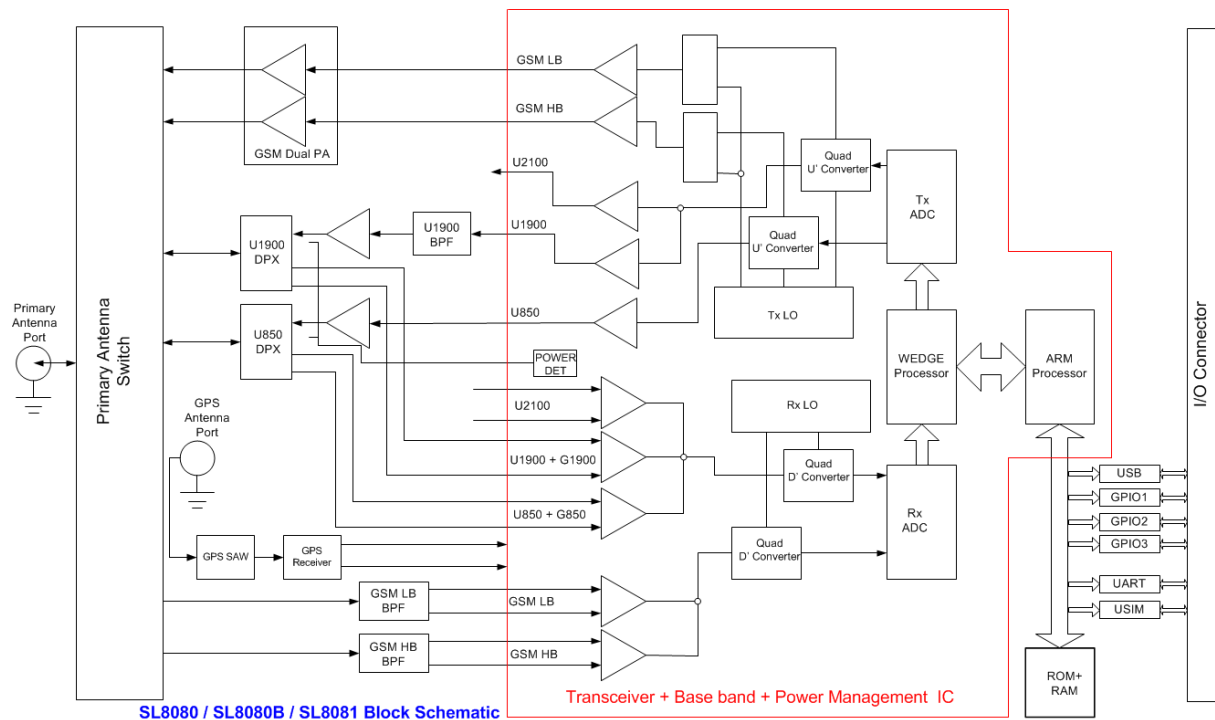


Figure 5. SL8080/80B/81 System Block

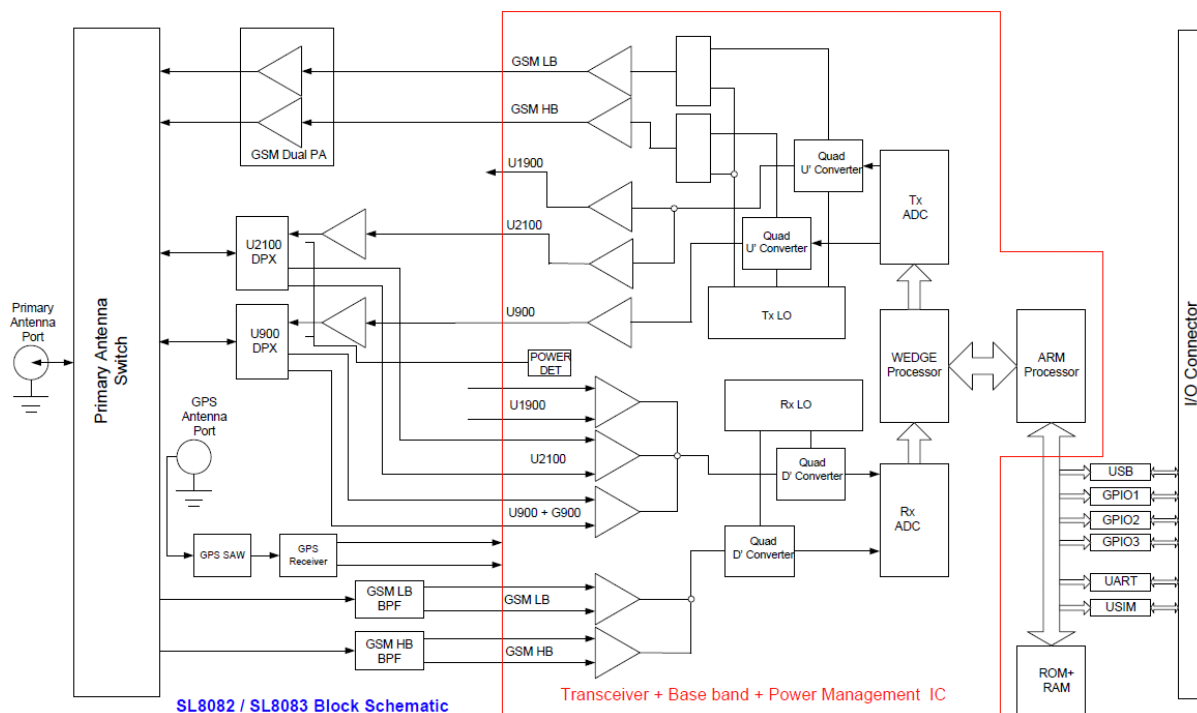


Figure 6. SL8082/83 System Block

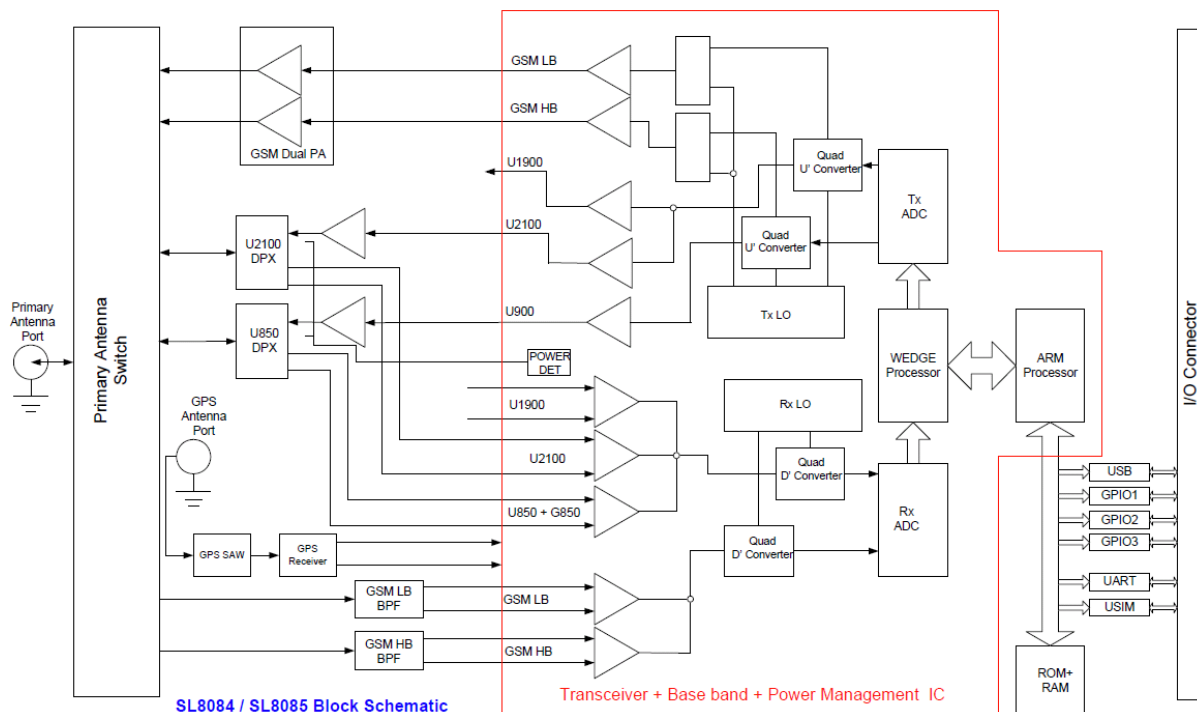


Figure 7. SL8084/85 System Block

4.1.1. Pin Configuration

The following figure illustrates the pin configuration of SL808X modules. Table 9 SL808X LGA Pad Pin Assignments provides details for each of the module's pins.

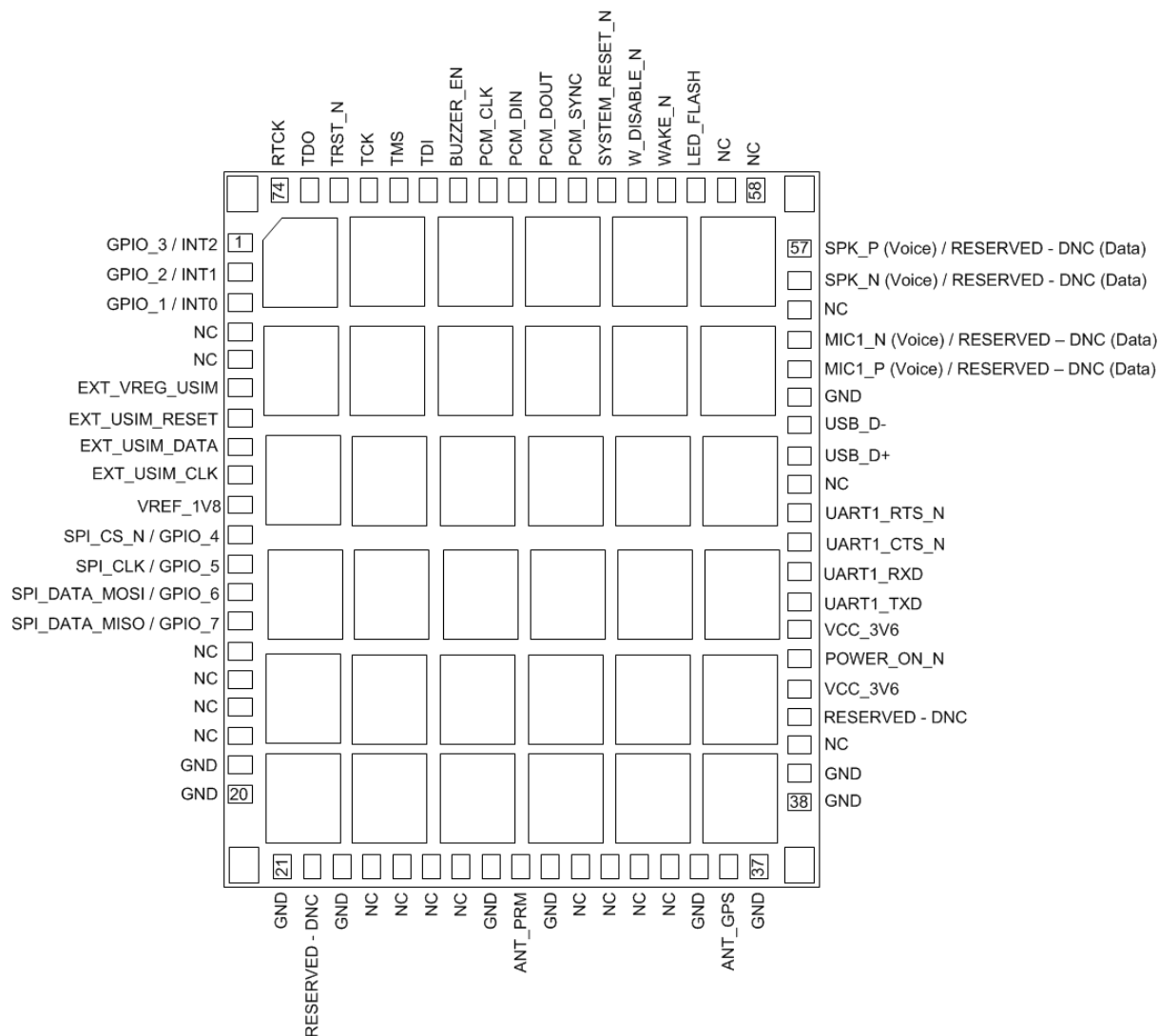


Figure 8. SL808X Device Pinouts²

² The names used for pins 45/46 and 47/48 were swapped from Rev.1 to be relative to the host—the pin functionality and signal direction have not changed.

4.1.2. Pin Description

The following table describes the LGA pad pin assignments.

See section 4.2 Digital I/O Electrical Information for 1V8 voltage characteristics.

Table 9. SL808X LGA Pad Pin Assignments^a

Pin	Signal Name		Description	Active State	Input / Output (Direction to Module)	Voltage (V)			
	Nominal	Mux				Min ^b	Typ ^b	Max ^b	Type
1	GPIO_3 ^c	INT2 ^g	General purpose I/O or External interruption	High / Low	Input High	1.17	-	2.10	Digital
					Input Low	-0.30	-	0.63	
					Output High	1.35	-	1.80	
					Output Low	0	-	0.45	
2	GPIO_2 ^d	INT1 ^g	General purpose I/O or External interruption	High / Low	Input High	1.17	-	2.10	Digital
					Input Low	-0.30	-	0.63	
					Output High	1.35	-	1.80	
					Output Low	0	-	0.45	
3	GPIO_1 ^e	INT0 ^g	General purpose I/O or External interruption	High / Low	Input High	1.17	-	2.10	Digital
					Input Low	-0.30	-	0.63	
					Output High	1.35	-	1.80	
					Output Low	0	-	0.45	
4	NC		No connect						
5	NC		No connect						
6	EXT_VREG_USIM		USIM VCC supply	Power	Output (1.8 V)	1.65	-	1.95	Power
					Output (3.0_V)	2.90	-	3.10	

Pin	Signal Name		Description	Active State	Input / Output (Direction to Module)	Voltage (V)			
	Nominal	Mux				Min ^b	Typ ^b	Max ^b	Type
7	EXT_USIM_RESET		USIM reset	Low	Output High (1.8V)	1.35	-	1.80	Digital
					Output Low (1.8V)	0.00	-	0.45	
					Output High (3.0V)	2.55	-	3.00	
					Output Low (3.0V)	0.00		0.45	
8	EXT_USIM_DATA		USIM I/O pin	Low	Input High (1.8 V)	1.17		2.10	Digital
					Input Low (1.8 V)	-0.30		0.63	
					Output High (1.8 V)	1.35	-	1.80	
					Output Low (1.8 V)	0.00		0.45	
					Input High (3.0 V)	1.95		3.30	
					Input Low (3.0 V)	-0.30		1.05	
					Output High (3.0 V)	2.55	-	3.00	
					Output Low (3.0 V)	0.00		0.45	
9	EXT_USIM_CLK		USIM clock	High	Output High (1.8V)	1.35	-	1.80	Digital
					Output Low (1.8V)	0.00		0.45	
					Output High (3.0V)	2.55	-	3.00	
					Output Low (3.0V)	0.00		0.45	
10	VREF_1V8		1.8 V LDO	High (when module is on)	Output	1.65	-	1.80	Power
11	SPI_CS_N ^e	GPIO_4 ^g	SPI chip select or General purpose I/O	Low	Output High	1.35	-	1.80	Digital
					Output Low	0.00	-	0.45	
12	SPI_CLK ^d	GPIO_5 ^g	SPI clock or General purpose I/O		Output High	1.35	-	1.80	Digital
					Output Low	0.00	-	0.45	
13	SPI_DATA_MOSI ^c	GPIO_6 ^g	SPI Master Output / Slave Input data pin or General purpose I/O		Output High	1.35	-	1.80	Digital
					Output Low	0.00	-	0.45	
14	SPI_DATA_MISO	GPIO_7 ^g	SPI Master Input / Slave Output data pin or General purpose I/O		Input High	1.17	-	2.10	Digital
					Input Low	-0.30	-	0.63	

Pin	Signal Name		Description	Active State	Input / Output (Direction to Module)	Voltage (V)			
	Nominal	Mux				Min ^b	Typ ^b	Max ^b	Type
15	NC		No connect						
16	SDA		I ² C Data		I/O	1.35	-	1.80	Digital
						0.00	-	0.45	
17	SCL		I ² C Clock		O	1.35	-	1.80	Digital
						0.00	-	0.45	
18	NC		No connect						
19	GND		Ground	GND	GND	-	-	-	
20	GND		Ground	GND	GND	-	-	-	
21	GND		Ground	GND	GND	-	-	-	
22	Reserved – DNC		No connect						
23	GND		Ground	GND	GND	-	-	-	
24	NC		No connect						
25	NC		No connect						
26	NC		No connect						
27	NC		No connect						
28	GND		Ground	GND	GND	-	-	-	
29	ANT_PRM		Main (primary) antenna		Input/Output	Refer to section 4.9 RF Interface			RF
30	GND		Ground	GND	GND	-	-	-	
31	NC		No connect						
32	NC		No connect						
33	NC		No connect						
34	NC		No connect						
35	GND		Ground	GND	GND	-	-	-	
36	ANT_GPS		GPS antenna		Input	Refer to section 4.9 RF Interface			RF
37	GND		Ground	GND	GND	-	-	-	
38	GND		Ground	GND	GND	-	-	-	

Pin	Signal Name		Description	Active State	Input / Output (Direction to Module)	Voltage (V)			
	Nominal	Mux				Min ^b	Typ ^b	Max ^b	Type
39	GND		Ground	GND	GND	-	-	-	
40	NC		No connect						
41	Reserved – DNC		No connect						
42	VCC_3V6		3.6 V supply	Power	Input	3.30	3.60	4.30	Power
43	POWER_ON_N		Power on		Input	0.00		1.80	Digital
44	VCC_3V6		3.6 V supply	Power	Input	3.30	3.60	4.30	Power
45	UART1_TXD ^f		UART Transmit Data	High / Low	Input High	1.17	-	2.10	Digital
					Input Low	-0.30	-	0.63	
46	UART1_RXD ^f		UART Receive Data	High / Low	Output High	1.35	-	1.80	Digital
					Output Low	0.00	-	0.45	
47	UART1_CTS_N ^f		UART Clear To Send	High / Low	Output High	1.35	-	1.80	Digital
					Output Low	0.00	-	0.45	
48	UART1_RTS_N ^f		UART Request To Send	High / Low	Input High	1.17	-	2.10	Digital
					Input Low	-0.30	-	0.63	
49	NC		No connect						
50	USB_D+		USB data positive (Low / Full speed)		Input High	2.00	3.30	3.60	Differential
					Input Low	0.00		0.80	
					Output High	2.80	3.30	3.60	
					Output Low			0.30	
			USB data positive (High speed)		Input High	0.30		0.44	
					Input Low	0.00		0.01	
					Output High	0.36	0.38	0.44	
					Output Low	0.00		0.01	

Pin	Signal Name		Description	Active State	Input / Output (Direction to Module)	Voltage (V)			
	Nominal	Mux				Min ^b	Typ ^b	Max ^b	Type
51	USB_D-		USB data negative (Low / Full speed)		Input High	2.00	3.30	3.60	Differential
					Input Low	0.00		0.80	
					Output High	2.80	3.30	3.60	
					Output Low			0.30	
			USB data negative (High speed)		Input High	0.30		0.44	
					Input Low	0.00		0.01	
					Output High	0.36	0.38	0.44	
					Output Low	0.00		0.01	
52	GND		Ground	GND	GND	-	-	-	
53	(SL8081/83/85) RESERVED - DNC		Do not connect						
	(SL8080/80B/82/84) MIC1_P		Microphone positive in series with 0.1µF DC blocking capacitor (Differential input across MIC1_P/MIC1_N)		Input		200 (mV _{pp})	2.60 (V _{pp})	Analog
54	(SL8081/83/85) RESERVED - DNC		Do not connect						
	(SL8080/80B/82/84) MIC1_N		Microphone negative in series with 0.1µF DC blocking capacitor (Differential input across MIC1_P/MIC1_N)		Input		200 (mV _{pp})	2.60 (V _{pp})	Analog
55	NC		No connect						
56	(SL8081/83/85) RESERVED - DNC		Do not connect						
	(SL8080/80B/82/84) SPK_N		Speaker negative (Differential output across SPK_P/SPK_N)		Output		80 (mV _{pp})	4.24 (V _{pp})	Analog

Pin	Signal Name		Description	Active State	Input / Output (Direction to Module)	Voltage (V)			
	Nominal	Mux				Min ^b	Typ ^b	Max ^b	Type
57	(SL8081/83/85) RESERVED - DNC		Do not connect						
	(SL8080/80B/82/84) SPK_P		Speaker positive (Differential output across SPK_P/SPK_N)				80 (mV _{pp})	4.24 (V _{pp})	Analog
58	NC		No connect						
59	NC		No connect						
60	LED_FLASH		LED driver	High	Output High	1.35	-	1.80	Digital
					Output Low	0.00	-	0.45	
61	WAKE_N		Wake Host Interface	Low	Output High	1.35	-	1.80	Digital
					Output Low	0.00	-	0.45	
62	W_DISABLE_N		Wireless disable	High / Low	Input High	1.17	-	2.10	Digital
					Input Low	-0.30	-	0.63	
63	SYSTEM_RESET_N		Reset	High / Low	Input High	1.17	-	2.10	Digital
					Input Low	-0.30	-	0.63	
64	PCM_SYNC		PCM Sync Out	High / Low	Output High	1.35	-	1.80	Digital
					Output Low	0.00	-	0.45	
65	PCM_DOUT ^d		PCM Data Out	High / Low	Output High	1.35	-	1.80	Digital
					Output Low	0.00	-	0.45	
66	PCM_DIN ^e		PCM Data In	High / Low	Input High	1.17	-	2.10	Digital
					Input Low	-0.30	-	0.63	
67	PCM_CLK ^c		PCM Clock	High / Low	Output High	1.35	-	1.80	Digital
					Output Low	0.00	-	0.45	
68	BUZZER_EN			High / Low	Output High	1.35	-	1.80	Digital
					Output Low	0.00	-	0.45	
69	TDI		Test Data Input	High / Low	Input High	1.17	-	2.10	Digital
					Input Low	-0.30	-	0.63	

Pin	Signal Name		Description	Active State	Input / Output (Direction to Module)	Voltage (V)			
	Nominal	Mux				Min ^b	Typ ^b	Max ^b	Type
70	TMS		Test Mode Select	High / Low	Input High	1.17	-	2.10	Digital
					Input Low	-0.30	-	0.63	
71	TCK		Test Clock	High / Low	Input High	1.17	-	2.10	Digital
					Input Low	-0.30	-	0.63	
72	TRST_N		Test Reset	Low	Input High	1.17	-	2.10	Digital
					Input Low	-0.30	-	0.63	
73	TDO		Test Data Output	High / Low	Output High	1.35	-	1.80	Digital
					Output Low	0.00	-	0.45	
74	RTCK		Return TCK	High / Low	Output High	1.35	-	1.80	Digital
					Output Low	0.00	-	0.45	

- a. During the powered-off state, digital signal pins may not be in a high impedance state.
- b. All values are preliminary.
- c. Pin may be reconfigured for use as DSR with 8-wire UART. See section 4.6.5 Configure the UART Interface for details.
- d. Pin may be reconfigured for use as DTR with 8-wire UART. See section 4.6.5 Configure the UART Interface for details.
- e. Pin may be reconfigured for use as DCD with 8-wire UART. See section 4.6.5 Configure the UART Interface for details.
- f. The names used for pins 45/46 and 47/48 were swapped from Rev.1 to be relative to the host—the pin functionality and signal direction have not changed.
- g. These multiplexed pins are only available with the Open AT Application Framework.

4.2. Digital I/O Electrical Information

The AirPrime SL808X Embedded Module uses 1.8 V CMOS for digital I/O. For electrical characteristics, see Table 10 Electrical Characteristics – 1.8V Type (1V8) Digital I/O.

4.2.1. Electrical Characteristics

Table 10 Electrical Characteristics – 1.8V Type (1V8) Digital I/O describes the electrical characteristics of 1.8 V CMOS pins.

Table 10. Electrical Characteristics – 1.8V Type (1V8) Digital I/O

Parameter ^a		I/O Type	Minimum	Maximum	Condition
Input/Output Pin	V _{IL}	CMOS	-0.30 V	0.63 V	
	V _{IH}	CMOS	1.17 V	2.10 V	
	V _{OL}	CMOS	0.00 V	0.45 V	I _{OL} varies by pin definition
	V _{OH}	CMOS	1.35 V	1.80 V	I _{OH} varies by pin definition
	I _{OH}			1 to 8 mA	Maximum varied by pin definition
	I _{OL}			-1 to -8 mA	

a. 'IL'—Input Low; 'IH'—Input High; 'OL'—Output Low; 'OH'—Output High

4.2.2. Pin Types

Several tables in this chapter include pin types as part of their descriptions. Table 12 Reset State Definition describes these pin types.

Table 11. Pin Type Codes

Type	Definition
A	Analog pin
I	Input
NP	No pull
O	Digital output
PU	Digital input, internal pull up
PD	Digital input, internal pull down
V	Power or Ground pin

4.2.3. Signal Reset States

Each interface described in this chapter includes a pin descriptions table, which identifies each signal’s reset state. Table 12 Reset State Definition describes these reset states.

Table 12. Reset State Definition

Parameter	Definition
0	Set to GND
1	Set to supply 1V8
Pull-down	Internal pull-down with ~60 kΩ resistor
Pull-up	Internal pull-up with ~60 kΩ resistor to supply 1V8
Z	High impedance
Undefined	Caution: <i>Undefined must not be used in an application if a special state is required at reset. These pins may be toggling a signal(s) during reset.</i>

4.3. General Purpose Input / Output

The AirPrime SL808X Embedded Module includes seven general purpose I/O (GPIO) pins. Table 13 GPIO Interface Features describes the purpose and features of this interface.

Some of these GPIO pins may be used to provide DCD, DTR, and DSR signals for 8-wire UART. See Table 22 Duplexed (Reconfigured) UART Interface Signal Groups for details.

Some of these GPIO pins are only available with the Open AT Application Framework. See Table 14 GPIO Pin Descriptionsa for details.

Table 13. GPIO Interface Features

Feature	Details
Purpose	<ul style="list-style-type: none"> OEM-configurable general purpose I/O (control, signaling, monitoring, etc.)
Implementation	<ul style="list-style-type: none"> Defaults to digital output
Power	<ul style="list-style-type: none"> 1.8 V (use VREF_1V8 as logic reference) Output drive current up to 8 mA.

4.3.1. Pin Descriptions

The following table describes the GPIO interface pins.

Table 14. GPIO Pin Descriptions^a

Pin	Signal	I/O Type	Reset State ^b	Description
1	GPIO_3	1V8	<ul style="list-style-type: none"> Using EMConnect: Set by user Not using EMConnect: Input, pull-down 	Configurable general purpose I/O
2	GPIO_2	1V8		
3	GPIO_1	1V8		
11	GPIO_4 ^c	1V8		
12	GPIO_5 ^c	1V8		
13	GPIO_6 ^c	1V8		
14	GPIO_7 ^c	1V8		

- See Table 9 SL808X LGA Pad Pin Assignments^a for additional pin-specific details.
- See Table 12 Reset State Definition for state definitions.
- These pins are only available with the Open AT Application Framework.

4.4. Serial Peripheral Interface (SPI)

With the Open AT Application Framework, the AirPrime SL808X Embedded Module may be connected to an external chip through the SPI bus.

Without the Open AT Application Framework, the SPI pins may be used to provide DCD, DTR, and DSR signals for 8-wire UART. See section 4.6.5 Configure the UART Interface for details.

The SPI bus interface includes:

- A CLK signal (SPI_CLK)
- An I/O signal (SPI_DATA_MOSI)
- An I signal (SPI_DATA_MISO)
- A CS (Chip Select) signal complying with the standard SPI bus (SPI_CS_N)

Features available on the SPI bus are:

- Master mode only operation
- SPI speed is from 102Kbit/s to 26Mbit/s
- 4-wire interface
- 1 to 16 bits data length

4.4.1. SPI Pin Descriptions

The following table describes the SPI interface pins.

Table 15. SPI Interface Signals^a

Pin	Signal	I/O Type	Reset State ^b
11	SPI_CS_N	1V8	Z
12	SPI_CLK	1V8	Z
13	SPI_DATA_MOSI	1V8	Z
14	SPI_DATA_MISO	1V8	Z

- a. See Table 9 SL808X LGA Pad Pin Assignments^a for additional pin-specific details.
b. See Table 12 Reset State Definition for state definitions.

4.4.2. Electrical Characteristics

The following table describes the SPI interface's electrical characteristics.

Table 16. SPI Interface Electrical Characteristics

Signal	Description	Minimum	Typical	Maximum	Unit
CLK-cycle	SPI clock frequency	0.102		26	MHz
Data-OUT delay	Data out ready delay time			5	ns
Data-IN-setup	Data in setup time	0		3	ns
Data-OUT-hold	Data out hold time	0		3	ns

4.4.3. SPI Configuration

Table 17. SPI Bus Configuration

Operation	Maximum Speed	SPI-Mode	Duplex	3-wire Type	4-wire Type
Master	26 Mb/s	0, 1, 2, 3	Half	SPI_CLK; SPI_DATA_MOSI; SPI_CS_N	SPI_CLK; SPI_DATA_MOSI; SPI_DATA_MISO; SPI_CS_N

Refer to section 4.4.5 Application for more information on the signals used and their corresponding configurations.

4.4.4. SPI Waveforms

The figure below shows the waveforms for SPI transfers with a 4-wire configuration in master mode 0.

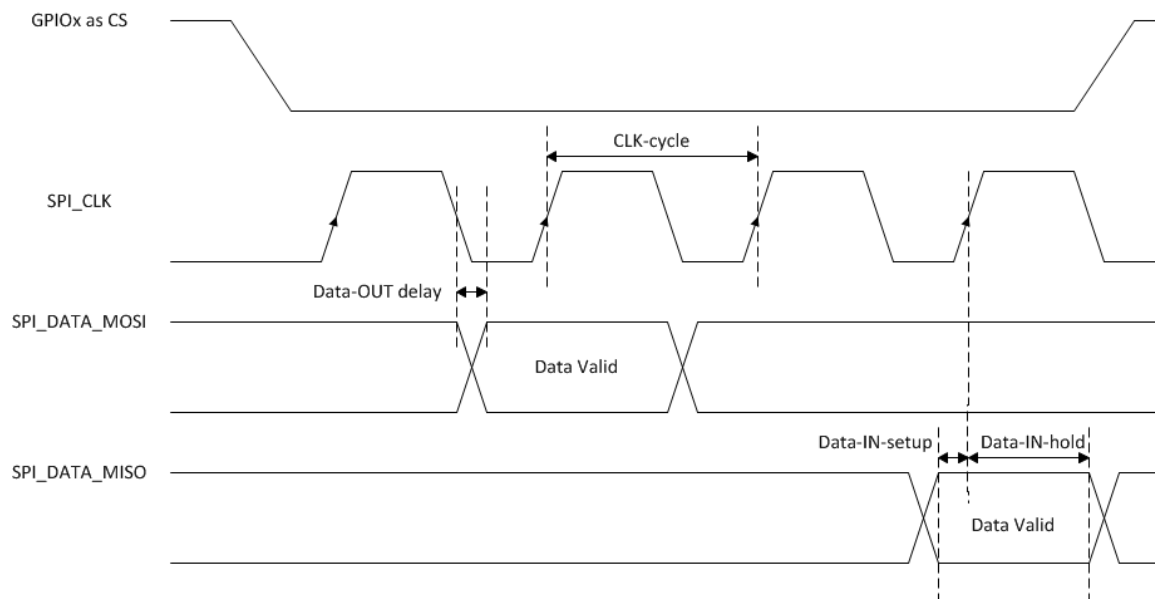


Figure 9. SPI Timing Diagram (Mode 0, Master, 4wires)

4.4.5. Application

For the 4-wire configuration, the input and output data lines are dissociated. SPI_DATA_MOSI is used as output only and SPI_DATA_MISO is used as input only.

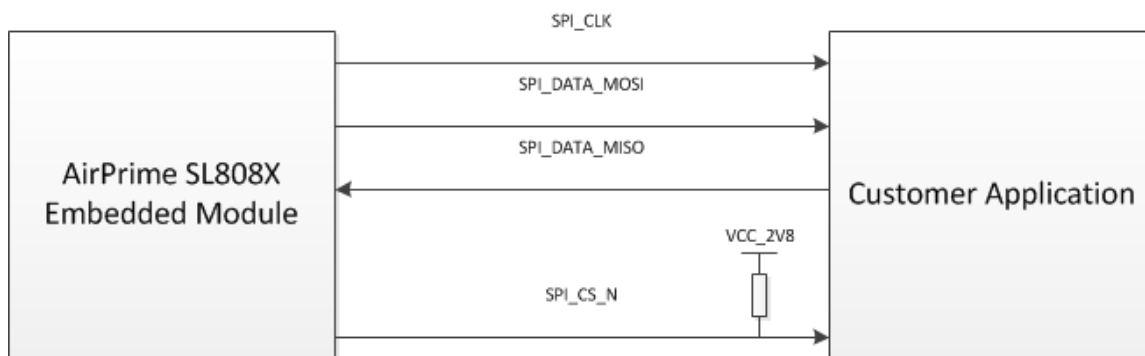


Figure 10. Example of a 4-wire SPI Bus Application

One pull-up resistor, R1, is needed to set the SPI_CS_N level during the reset state. Except for R1, no other external component is needed if the electrical specifications of the customer application comply with the AirPrime SL808X Embedded Module SPI interface electrical specifications.

4.5. I²C Bus

The I²C interface includes a clock signal (SCL) and data signal (SDA) complying with a 100kbit/s standard interface (standard mode: s-mode).

The I²C bus is always in master mode operation.

The maximum speed transfer range is 400kbit/s (fast mode: f-mode).

4.5.1. I²C Pin Description

The following table describes the I²C interface pins.

Table 18. I²C Pin Descriptions^a

Pin	Signal	I/O	I/O Type	Reset State ^b	Description
16	SDA	I/O	Open drain	Z	Serial Data
17	SCL	O	Open drain	Z	Serial Clock

- a. See Table 9 SL808X LGA Pad Pin Assignmentsa for additional pin-specific details.
- b. See Table 12 Reset State Definition for state definitions.

4.5.2. I²C Waveforms

The figure below shows the I²C bus waveform in master mode configuration.

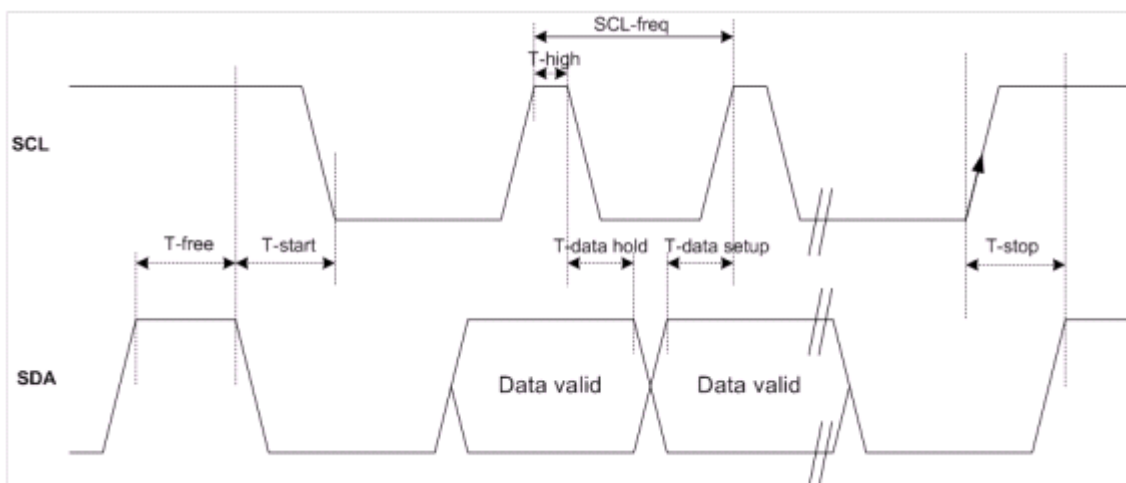


Figure 11. I²C Timing Diagram; Master Mode

4.5.3. Electrical Characteristics

Refer to Table 9 SL808X LGA Pad Pin Assignmentsa for basic characteristics (type, voltage).

Table 19. I²C Bus Interface Electrical Characteristics

Signal	Description	Minimum	Typical	Maximum	Unit
SCL-freq	I2C clock frequency	100		400	kHz
T-start	Hold time START condition	0.6			µs
T-stop	Setup time STOP condition	0.6			µs
T-free	Bus free time, STOP to START	1.3			µs
T-high	High period for clock	0.6			µs
T-data-hold	Data hold time	0		0.9	µs
T-data-setup	Data setup time	100			ns

4.5.4. Application

The two lines need to be pulled-up to the V_{I²C voltage. The V_{I²C voltage is dependent on the customer application component connected on the I²C bus. Nevertheless, V_{I²C} must comply with the AirPrime SL808X embedded module electrical specification.}}

The VCC_1V8 (pin 10) of the AirPrime SL808X embedded module may be used to connect the pull-up resistors, if the I²C bus voltage is 1.8 V.

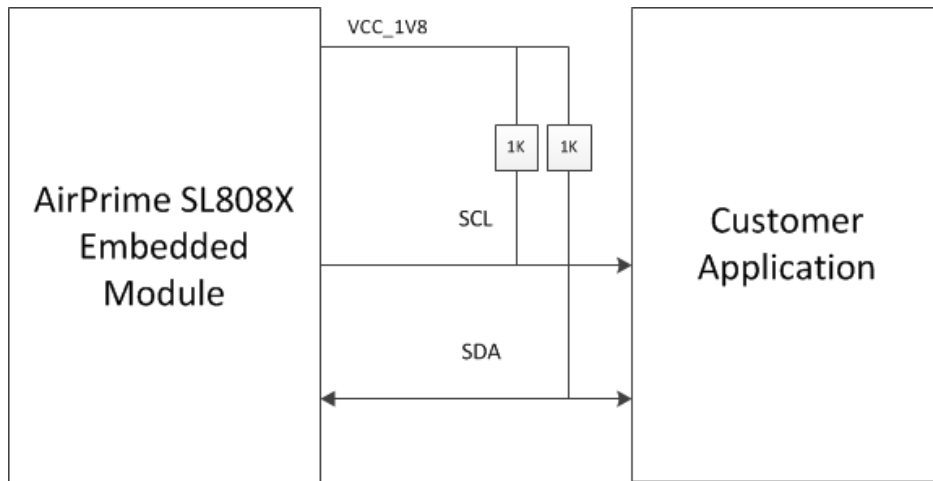


Figure 12. Example of I²C Bus Application

The pull-up resistor values are selected depending on the mode used. For Fast mode, it is recommended to use 1kΩ resistors in order to ensure the compliance with the I²C specification. For Standard mode, higher values of resistors may be used to save power consumption.

4.6. Main Serial Interface (UART1)

The AirPrime SL808X Embedded Module includes a serial interface (UART1) for host–module communication. The interface can be configured as:

- 4-wire UART
- 8-wire UART (using reconfigured GPIO, PCM, or SPI pins)

The following table describes the purpose and features of this interface.

See Figure 36 Main Serial Interface (UART1) for an implementation of the UART1 interface.

Note: The SL808X may be provisioned with the ability to use the UART1 interface to communicate with peripheral devices. Contact Sierra Wireless for further information.

Table 20. UART1 Interface Features

Feature	Details
Purpose	<ul style="list-style-type: none"> • Serial host–module communication • Dependent on provisioning, communication with peripheral devices. Contact Sierra Wireless for further information.
Implementation	<ul style="list-style-type: none"> • Four-wire/eight-wire serial interface based on TIA-232 (RS232 protocol) • An RS-232 level shifter device may be required.
Data rates supported	<ul style="list-style-type: none"> • High speed up to 4Mbps (115K, 230K, 460.8K, 921.6K, 3.2M, 3.68M, 4M)

Feature	Details
Optional functionality	<ul style="list-style-type: none"> Dependent on provisioning, module may be able to communicate with peripheral devices. Contact Sierra Wireless to discuss possible firmware support.

4.6.1. Available Services

Dependent on device configuration, the AirPrime SL808X Embedded Module supports the following data services (logical protocols) for the transfer of data and control information over the UART1 interface:

- AT—Command processor/data service
- DM (Diagnostic Message service)
- NMEA (GPS) service
- PDP services
- HIP / CnS

4.6.2. UART1 Pin Descriptions

The following table describes the UART1 interface pins.

Note: The names used for pins 45/46 and 47/48 were swapped from Rev.1 to be relative to the host—the pin functionality and signal direction have not changed.

Table 21. Serial Port High-Speed UART1 Interface^a

Signal ^b	Pin ^c	n-wire		Direction wrt Host	Description/Notes
		4	8		
UART1_TXD	45	✓	✓	Output	Transmit Data <ul style="list-style-type: none"> • UART1 serial data transmit line (modem input)
UART1_RXD	46	✓	✓	Input	Receive Data <ul style="list-style-type: none"> • UART1 serial data receive line (modem output)
UART1_CTS_N	47	✓	✓	Input	Clear To Send
UART1_RTS_N	48	✓	✓	Output	Request To Send
For 8-wire UART, the DCD, DTR, and DSR signals are duplexed over GPIO, PCM, or SPI lines. See section 4.6.5 Configure the UART Interface for details.					
DTR		See note	✓	Output	Data Terminal Ready <ul style="list-style-type: none"> • DTR may be used to support low power operation of 4-wire UART. See section 4.6.5 Configure the UART Interface for details.
DCD			✓	Input	Data Carrier Detect
DSR			✓	Input	Data Set Ready

Signal ^b	Pin ^c	n-wire		Direction wrt Host	Description/Notes
		4	8		
WAKE_N	61		✓	Input	Similar to standard UART RI (Ring Indicator) <ul style="list-style-type: none"> • Activation events selected with AT+WWKUP (Ring received, SMS received, etc.) • Continues to function regardless of UART service mapping. • For example, can be generated when SMS is received.) • Active low signal

- a. See Table 9 SL808X LGA Pad Pin Assignments^a for additional pin-specific details.
- b. The names used for pins 45/46 and 47/48 were swapped from Rev.1 to be relative to the host—the pin functionality and signal direction have not changed.
- c. All pins are 1V8.

Table 22. Duplexed (Reconfigured) UART Interface Signal Groups

Signal Group	DCD	DTR	DSR
GPIO	GPIO_1 (Pin 3)	GPIO_2 (Pin 2)	GPIO_3 (Pin 1)
PCM	PCM_DIN (Pin 66)	PCM_DOUT (Pin 65)	PCM_CLK (Pin 67)
SPI	SPI_CS_N (Pin 11)	SPI_CLK (Pin 12)	SPI_DATA_MOSI (Pin 13)

4.6.3. 4-Wire Serial Interface

The signals used in this interface are listed in Table 21 Serial Port High-Speed UART1 Interface^a.

4.6.4. 8-Wire Serial Interface

The signals used in this interface are listed in Table 21 Serial Port High-Speed UART1 Interface^a and Table 22 Duplexed (Reconfigured) UART Interface Signal Groups.

The interface uses dedicated signals from the 4-wire interface, and the DCD, DTR, and DSR signals from the reconfigured GPIO, PCM, or SPI pins. The RI is provided by the WAKE_N signal.

4.6.5. Configure the UART Interface

Use AT+WHCNF¹ to:

- Enable/disable the UART interface
- Default to 4-wire UART

¹ Refer to document [3] AirPrime MC8xxx Embedded Modules Extended AT Command Reference for details.

- Configure the device for 8-wire UART by selecting an I/O signal group (GPIO/PCM/SPI) to use for DCD, DTR, and DSR
- Enable/disable the specific signals. For example, you can enable DTR only for use with 4-wire UART to control low power operation.

4.6.5.1. Low Power Operation

The modem uses AT+WHCFN¹ to configure low power operation in the following ways:

- 8-wire UART with DTR enabled—UART is halted when DTR is deasserted, and resumed when DTR is asserted. See section 4.6.5 Configure the UART Interface for details on enabling the DTR signal.
- 4-wire UART with sleep flag enabled:
 - The UART remains on for 15 seconds after the device boots. If there is no activity on the UART during this period, the UART is stopped.
 - The UART will resume when there is activity on the transmit line (UART1_TXD). Note that the first character may be missed due to latency. This can be mitigated by sending a spare character (for example, AAT).
 - After no activity for approximately 4 seconds, the UART will be stopped again.
- 4-wire UART with sleep flag disabled—UART never sleeps.

4.6.6. Lock the UART Interface

On systems that do not have USB support:

- The “HWCFLGLOCK”¹ customization may be used to prevent !MAPUART from being changed. This prevents the UART interface from being inadvertently disabled.
- The UART interface should only be used for AT and PDP services.

4.7. USIM Interface

The AirPrime SL808X Embedded Module includes a 4-wire USIM interface that allows a SIM to be directly connected. The following table describes the purpose and features of this interface.

Table 23. USIM Interface Features

Feature	Details
Purpose	<ul style="list-style-type: none"> • Communicate with USIM socket on host device • Supports regular and embedded SIMs
Implementation	<ul style="list-style-type: none"> • Four-wire interface • Voltage levels comply with 3GPP standards
Power	<ul style="list-style-type: none"> • 1.8 V (3G) or 3.0 V (2G) operation. Compliant with GSM 11.11 recommendations concerning SIM functions. • Host must keep current draw ≤ 10mA

4.7.1. USIM Pin Descriptions

The following table describes the USIM interface pins.

Table 24. USIM Interface Signals^a

Pin	Signal	I/O Type ^b	Description	Notes
6	EXT_VREG_USIM		USIM power supply	<ul style="list-style-type: none"> 1.8 V (3G) or 3 V (2G). Maximum allowed current draw = 10 mA.
7	EXT_USIM_RESET		USIM reset signal	
8	EXT_USIM_DATA		USIM data	<ul style="list-style-type: none"> A shunt capacitor may be needed. (PCB provision for capacitor is recommended) Signal rise/fall times must be < 1 μs.
9	EXT_USIM_CLK		USIM clock	<ul style="list-style-type: none"> Typically 4 MHz at EXT_VREG_USIM level. Host should minimize rise time (<50 ns) by adjusting trace capacitance and filtering needs as required

a. See Table 9 SL808X LGA Pad Pin Assignments^a for additional pin-specific details.

b. See Table 11 Pin Type Codes for type descriptions.

4.7.2. Application Notes

4.7.2.1. Reference Schematic

See section 14 Signal Reference Schematics for an implementation of the SIM interface.

4.7.2.2. USIM Socket Pin Description

The following table describes the required USIM socket pins.

Table 25. USIM Socket Pin Descriptions

Pin	Signal	Description
1	VCC	EXT_VREG_USIM
2	RST	EXT_USIM_RESET
3	CLK	EXT_USIM_CLK
4	-	-
5	GND	GROUND
6	-	-
7	I/O	EXT_USIM_DATA
8	-	-

4.8. USB 2.0 Interface

The AirPrime SL808X Embedded Module features a USB 2.0 interface for data transfer, modem control, and diagnostic information.

Table 26. USB 2.0 Interface Features

Feature	Details
Standards compliance	<ul style="list-style-type: none"> Universal Serial Bus Specification, Rev 2.0 CDC 1.1 - ACM compliant
Performance	<ul style="list-style-type: none"> Optimized for high speed (480 Mbps) Throughput rates may vary significantly based on packet size, host interface, and firmware revision. Support for Full speed (12 Mbps) Throughput performance is on an “as-is” basis and must be characterized by the OEM.
Power supply	<ul style="list-style-type: none"> VCC supply 3.3 V type compatible
Additional features	<ul style="list-style-type: none"> Firmware download over USB

Note: The SL808x embedded module does not claim any CDC classes in the descriptors and does not support functional descriptors. As a result, it is not normally compatible with native CDC-ACM drivers.

4.8.1. USB Pin Descriptions

The following table describes the USB interface pins.

Table 27. USB Interface Pins^a

Pin	Signal	Description	Notes
50	USB_D+	HS-USB data +	<ul style="list-style-type: none"> Protected against ±500V Human Body Model ESD. ESD suppressor with shunt capacitance <1 pF is recommended. Host must ensure D+ and D- traces are well matched and of differential impedance of 90 Ω. All high-speed differential routing techniques should be applied. Allocate room to accommodate a common mode choke filter (90 Ω impedance) between the module and destination
51	USB_D-	HS-USB data -	

a. See Table 9 SL808X LGA Pad Pin Assignments^a for additional pin-specific details.

4.8.2. Electrical Characteristics

The following table describes the USB interface's electrical characteristics.

Table 28. USB Interface Electrical Characteristics

Parameter	Mode	Minimum	Maximum	Unit
USB_D+	High speed	360	440	mV
USB_D	Full speed	2.8	3.6	V

4.8.3. USB Configurations

The AirPrime SL808X Embedded Module supports the USB configurations listed in the following table. The basic service configuration is PRI-dependent, and some services can be excluded, if required.

Table 29. Supported USB Configurations

Configuration	Interfaces	Services
Composite, Direct IP	OBEX, ACM, ECM	CnS, DM, NMEA, AT, DIP data
Composite, MUX-capable	OBEX, ACM	CnS, DM, NMEA, AT, PPP data
Composite	OBEX, ACM	CnS, DM, NMEA, AT, PPP data
Non-composite, MUX-capable	OBEX, ACM	CnS, DM, NMEA, AT, PPP data

4.8.4. Reference Schematics

See section 14 Signal Reference Schematics for an implementation of the USB interface.

4.8.5. USB Host Drivers

If you will not be using Sierra Wireless drivers, refer to document [6] AirCard/AirPrime USB Driver Developer's Guide for details on developing your own USB drivers.

4.8.5.1. Host Driver Requirements

The host driver must support:

- USB host in order to interface with the module
- CDC-ADM and OBEX interface types

The host driver may optionally support:

- Low power mode—USB suspend, resume, and remote wakeup as described in document [8] Universal Serial Bus Specification, Rev 2.0
- ECM—Ethernet Control Model for Direct IP
- MUX—Sierra Wireless' implementation of the 3GPP 27.010 MUX standard over CDC-ACM

4.9. RF Interface

The AirPrime SL808X Embedded Module's RF (radio frequency) interface uses two antenna ports for Tx/Rx and GPS. The following table describes the purpose and features of this interface.

Table 30. RF Interface Features

Feature	Details
Purpose	<ul style="list-style-type: none"> Primary antenna—Rx/Tx GPS antenna—GPS functionality
Impedance	<ul style="list-style-type: none"> Nominal: 50 Ω DC: High Impedance

4.9.1. RF Connections

To protect the antenna lines from baseband signal noise:

- Connection from each antenna port (RF) to the antenna should use a coax cable or a good microstrip/strip line.
- RF trace should be 50 Ω to avoid mismatch and load pull effects.
- RF connection must be isolated from other high voltage and noisy signals to ensure a good Rx sensitivity level.
- RF traces on the host PCB could be lossy, so should be kept as short as possible.

For more information, see Figure 34 RF Routing Examples.

4.9.2. RF Pin Descriptions

The following table describes the RF interface pins.

Table 31. RF Interface Pins

Pin	Signal	Description	Notes
Rx/Tx Antenna			
28	Ground		
29	ANT_PRM	Main (primary) antenna	ESD protected—See document [5] Sierra Wireless Reliability Specification.
30	Ground		
GPS Antenna			
35	Ground		
36	ANT_GPS	GPS antenna	
37	Ground		

4.9.3. RF Performance

The module's radio transceiver meets the requirements of 3GPP Release 5.

The following table describes supported GSM, WCDMA, and GPS bands, conducted Tx power, and conducted Rx sensitivity.

Table 32. Band Support, Conducted Tx Power, and Conducted Rx Sensitivity^a

Band	Frequencies (MHz)	SL8080/SL8080B/SL8081	SL8082/SL8083	SL8084/SL8085	Conducted Tx Power		Conducted Rx Sensitivity			
					Avg (dBm)	Notes	Coding	Mode	Typ	Worst Case
GSM Bands										
GSM 850	Tx: 824–849 Rx: 869–894	✓	✓	✓	+33 ± 2	GMSK, connectorized (Class 4)	CS1-3 ^b CS4 ^c	GMSK GMSK	-106 -103	-102 -99
					+27 ± 3	8PSK, connectorized (Class E2)	MCS1-3 ^c MCS4 ^c	GMSK GMSK	-106 -103.5	-102 -99.5
EGSM 900	Tx: 880–915 Rx: 925–960	✓	✓	✓	+33 ± 2	GMSK, connectorized (Class 4)	MCS5 ^c MCS6 ^c	8PSK 8PSK	-100 -98	-96 -94
					+27 ± 3	8PSK, connectorized (Class E2)	MCS7 ^c MCS8 ^c MCS9 ^c	8PSK 8PSK 8PSK	-95 -92.5 -90	-91 -88.5 -86
DCS 1800	Tx: 1710–1785 Rx: 1805–1880	✓	✓	✓	+30 ± 2	GMSK, connectorized (Class 1)	CS1-3 ^b CS4 ^c	GMSK GMSK	-106 -103	-102 -99
					+26 ± 3	8PSK, connectorized (Class E2)	MCS1-3 ^c MCS4 ^c	GMSK GMSK	-106 -103.5	-102 -99.5
PCS 1900	Tx: 1850–1910 Rx: 1930–1990	✓	✓	✓	+30 ± 2	GMSK, connectorized (Class 1)	MCS5 ^c MCS6 ^c	8PSK 8PSK	-100 -98	-96 -94
					+26 ± 3	8PSK, connectorized (Class E2)	MCS7 ^c MCS8 ^c MCS9 ^c	8PSK 8PSK 8PSK	-95 -92.5 -90	-91 -88.5 -86

Band	Frequencies (MHz)	SL8080/SL8080B/ SL8081	SL8082/SL8083	SL8084/SL8085	Conducted Tx Power		Conducted Rx Sensitivity		
					Avg (dBm)	Notes			
WCDMA Bands^d							Call Details	Typ	Worst Case
Band I WCDMA 2100	Tx: 1920–1980 Rx: 2110–2170		✓	✓	+24 +1/-3	Connectorized (Class 3) Nominal conditions	RMC DL 12.2 kbps; 0.1% BER	-108	-106.7
Band II WCDMA 1900	Tx: 1850–1910 Rx: 1930–1990	✓						-107	-104.7
Band V WCDMA 850	Tx: 824–849 Rx: 869–894	✓		✓				-108	-104.7
Band VI WCDMA 800	Tx: 830–840 Rx: 875–885			✓				-108	-104.7
Band VIII WCDMA 900	Tx: 880–915 Rx: 925–960		✓					-108	-103.7
GPS									
GPS	1575.42	(SL8080/82/84)							

- a. Preliminary values
- b. 2% Bit Error Rate (BER) circuit switched
- c. 10% Block Error Rate (BLER)
- d. WCDMA channel spacing is 5 MHz, but this can be adjusted to optimize performance in a particular deployment scenario.

4.9.4. GPS Specifications

Note: These specifications are preliminary targets that are subject to change without notice. Actual GPS functionality depends on the firmware version and module configuration.

The module provides the following GPS features:

4.9.4.1. Standalone GPS

- Leading standalone/autonomous GPS performance
- -145 dBm cold start sensitivity
- -153 dBm hot start sensitivity
- -155 dBm tracking sensitivity
- < 45 seconds average cold start TTFF (Time To First Fix) in open air
- < 3 second average super hot TTFF in open sky
- < 10 m accuracy in open sky

Note: For optimum performance, the modem should be registered on the GSM/UMTS network, but does not need to be on an active data or voice call.

4.9.4.2. gpsOneXTRA™

- Enables enhanced standalone GPS operation by downloading < 40 kB file from a server on the Internet
- Performance closer to UE-based operation than traditional standalone GPS operation
- Best if downloaded once every 1–2 days, but valid for up to 7 days with some accuracy degradation

4.9.4.3. A-GPS Features

- Leading A-GPS performance
 - Exceeds 3GPP RAN 4 AGPS performance specification
- -153 dBm cold start sensitivity
- -155 dBm tracking sensitivity
- < 5 second average cold start TTFF in open sky (UE-based)
- < 3 second average super hot TTFF in open sky
- < 2 m accuracy in open sky 1 Hz tracking with CEP-50
- UMTS Control Plane (CP)—UE-assisted and UE-based
- GSM Control Plane (CP)—UE-assisted and UE-based
- OMA SUPL 1.0 User Plane (UP)—UE-assisted and UE-based

4.9.4.4. Enhanced Navigation 2.0 Feature

- Provides leading performance in car and walking navigation modes as well as accuracy while stationary
- Airline/Game/Offline mode
- GPS capability is available while phone is offline

4.9.4.5. NMEA

- Supported sentences: GGA, GSA, GSV, RMC, VTG

4.9.4.6. Software

- GPS monitor application is built into Watcher

4.9.5. Antenna Specifications

The antenna must meet the requirements specified in the following table.

The optimum operating frequency depends on the application. A dual-band, triband or quad-band antenna should operate in these frequency bands and have the described characteristics.

Table 33. Main Antenna (ANT_PRI) Specification

Parameter	Min ^a	Typ ^a	Max ^a	Units	Notes
Connection loss	-	-	0.5	dB	Maximum loss to antenna
VSWR	-	-	2.3:1		Maximum allowed VSWR of antenna
Radiated gain	Low bands	0	5 ^b	dBi	
	High bands		3 ^c		

a. Preliminary values

b. When Tx power from modem is $\leq +33$ dBm (2W)

c. When Tx power from modem is $\leq +30$ dBm (1W)

Note: Sierra Wireless recommends a maximum VSWR of 1.5:1 for both TX and RX bands. Even so, all aspects of this specification will be fulfilled even with a maximum VSWR of 2:1.

4.9.5.1. Application Notes

The following are suggested guidelines for the two antenna ports:

- The antenna should be isolated as much as possible from analog and digital circuitry (including interface signals).
- On applications with an embedded antenna, poor shielding could dramatically affect the receiving sensitivity. Moreover, the power radiated by the antenna could affect the application (TDMA noise, for instance).
- As a general recommendation, all components or chips operated at high frequencies (microprocessors, memories, DC/DC converter) or other active RF parts should not be placed too close to the AirPrime SL808X Embedded Module. In the event that this happens, the correct power supply layout and shielding should be designed and validated.

- Components near RF connections or unshielded feed lines must be prohibited.
- RF lines must be kept as short as possible to minimize loss.
- Primary path common for Tx and Rx should be routed on the host PCB using a 240 micron wide trace with (to withstand high power up to 2W RF) 50 Ω as impedance up to the antenna connector or launch point.

Note: If the impedance of the module is mismatched, RF performance is reduced significantly.

- Should be protected for ESD using a 8 kV-rated suppressor to avoid damage during antenna assembly, etc. Capacitance should be < 0.2 pF.
- RF trace and cable connecting the pin to the antenna should be of low loss (<0.3 dB)
- Antenna connected on the ANT_PRM port should offer 2:1 or better VSWR in order to maintain Tx power within +/- 2dB from the nominal power and the VSWR could be 2.3:1 or better for the Rx band frequencies.
- Antenna connected on the ANT_GPS port should offer 3:1 or better VSWR in order to maintain radiated sensitivity.
- Antenna location may affect RF performance. Although the module is shielded to prevent interference in most applications, the placement of the antenna is still very important—if the host device is insufficiently shielded, high levels of broadband or spurious noise can degrade the module's performance.
- Antenna cables should be routed, if possible, away from noise sources (switching power supplies, LCD assemblies, etc.). If the cables are near the noise sources, the noise may be coupled into the RF cable and into the antenna.

4.9.6. Radiated Emissions

The device alone meets all regulatory emissions limits when tested into a cabled (conducted) 50 Ω system. With antenna designs with up to 2.3:1 VSWR or worse, the radiated emissions could exceed limits. These emissions must be tested with the final antenna to ensure they pass. Examples of these limits would be FCC Part 22 and Part 24, test case 12.2.1 for GSM (3GPP TS 51.010), and test case 4.2.2 for WCDMA (ETSI EN 301 511).

The system gain value affects both radiated power and regulatory (FCC, IC, CE, etc.) test results.

4.9.7. Radiated Sensitivity Measurement

A wireless device contains many sources of noise that contribute to a reduction in Rx performance.

To determine the extent of any desensitization of receiver performance due to self-generated noise in the host device, over-the-air (OTA) or radiated testing is required. This testing can be performed by Sierra Wireless or you can use your own OTA test chamber for in-house testing.

Most carriers require a certain level of receiver performance to ensure proper functioning of the device on their networks. Although AirPrime soldered-down modules have been designed to meet these carrier requirements, they are still susceptible to various performance inhibitors.

4.10. Audio Interfaces

The AirPrime SL808X Embedded Module supports two audio interfaces (analog and PCM digital) and allows dynamic run-time selection of the appropriate interface:

- Analog Audio Interface
- Digital Audio Interface (PCM)

4.11. Analog Audio Interface

The AirPrime SL808X Embedded Module analog audio interface supports one microphone input and one speaker output.

Table 34 Audio Interface Features describes the purpose and features of this interface.

Table 34. Audio Interface Features

Feature	Details
Implementation	<ul style="list-style-type: none"> • Supports analog audio processing • Does not provide on-board filtering (except for 0.1 μF blocking capacitors on microphone lines) • Host must provide bias and signal filters • Host should float the SPK_N, SPK_P, MIC1_P and MIC1_N lines if not used. If the customer uses single-end mode, then the audio lines should be connected as shown in Figure 15, Figure 16, or Figure 19. • ESD protection may be required on audio interface lines
Features	<ul style="list-style-type: none"> • Echo cancellation and noise reduction • TTY/TDD compatibility through the microphone/speaker connections (Note: TTY/TDD is not supported by the PCM interface.) • On-board FIR/IIR (Finite and Infinite Impulse Response) digital filtering (also through AT) • AGC (Automatic Gain Control) • AVC (Automatic Volume Control) • RVE (Received Voice Enhancement) processing block control via AT command

4.11.1. Pin Descriptions

The following table describes the analog audio interface pins.

Table 35. Analog Audio Interface Connections^a

Pin	Signal	Description	Notes
53	MIC1_P	Line Audio input	Differential audio input, line level. In series with 0.1 μ F DC blocking capacitor.
54	MIC1_N	Line Audio input	Differential audio input, line level. In series with 0.1 μ F DC blocking capacitor.
56	SPK_N	Main speaker	Differential audio output, line level
57	SPK_P	Main speaker	Differential audio output, line level

a. See Table 9 SL808X LGA Pad Pin Assignments^a for additional pin-specific details.

4.11.2. Microphone Features

The microphone can be connected in either differential or single-ended mode:

- Differential mode—Default method (recommended). Rejects common mode noise and TDMA noise.
- Single-ended mode—Requires good ground plane, filtering and shielding to avoid audio path disturbances. Note that the audio input signal is decreased by 6 dB compared to differential mode.

The gain of both MIC inputs are internally adjusted and can be tuned using AT commands. For more information on AT commands, refer to document [3] AirPrime MC8xxx Embedded Modules Extended AT Command Reference.

4.11.2.1. MIC Microphone Input

The microphone input has the following features:

- Default mode—Differential. Can also be configured in single-ended mode.
- Includes biasing for electret microphone, which can be directly connected to the input.
- AirPrime SL808X Embedded Module has embedded AC coupling.
- For electrical characteristics, see the following table.

Table 36. MIC Input Electrical Characteristics

Parameter	Condition	Minimum	Typical	Maximum	Unit
Mic bias voltage ^a			1.8		V
Load impedance		25.6	32		Ω
Full-scale input voltage across (MIC1_P and MIC1_N)	0 dB gain	0.89	1	1.12	V _{rms}
	24 dB gain	56.2	61.3	70.8	
Gain error (absolute)	0 dB and 24 db gain settings	-1	0.2	1	dB
Output referred noise	0 dB gain, input grounded, A-weighted		-88.92	-88.91	dBFS
	24 dB gain, input grounded, A-weighted		-83.92	-83.92	
Input impedance	Differential mode	16	20	24	kΩ
	Single-ended mode	8	10	12	kΩ
THD+N ratio	0 dB analog gain Input frequency=1.02 kHz Output=-1dBFS	40	90.84		dB
	24 dB analog gain Input frequency=1.02 kHz Output=-1dBFS	40	82.43		dB
Input capacitance	At each pin			5	pF
Input offset voltage		-5		5	mV

a. Host must provide 1.8 V supply to bias the MIC lines. Voltage accuracy should be ±3%.

Caution: *The voltage input value for MIC cannot exceed the maximum working voltage; otherwise, clipping will appear.*

4.11.2.1.1. MIC Differential Connection Example

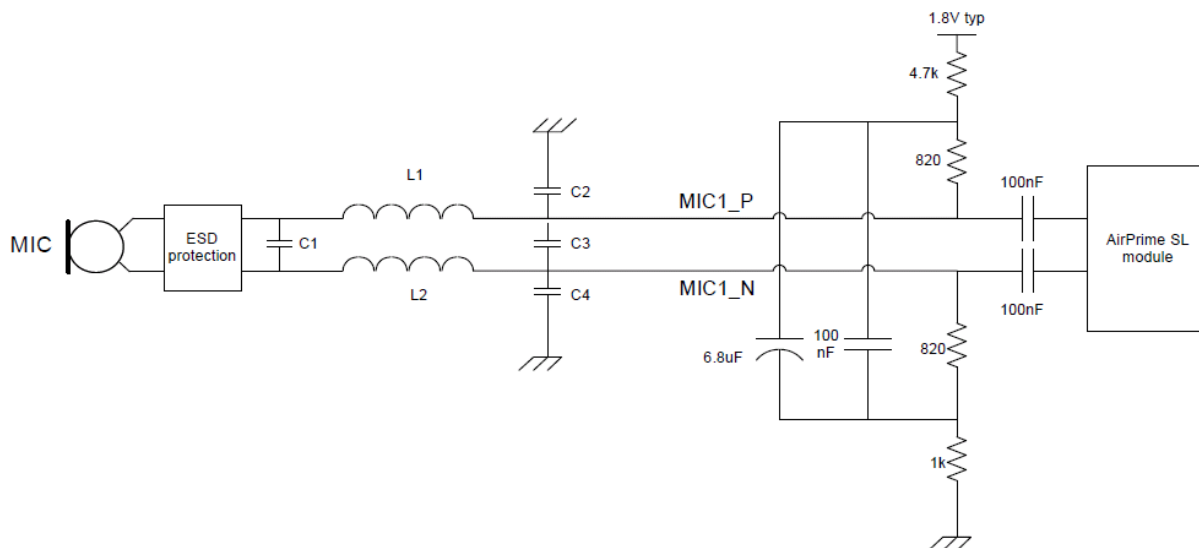


Figure 13. Example – MIC Differential Connection with LC Filter

LC filter (L1, L2, C2, C3, C4) considerations:

- Filter is not mandatory. Audio quality may be good enough without it, depending on the design.
- Filter may be used to reduce TDMA noise (from EMI perturbation).
- If no filter is used, capacitors must be removed and the coil replaced by 0 Ω resistors resulting in an equivalent circuit as shown in the following figure.

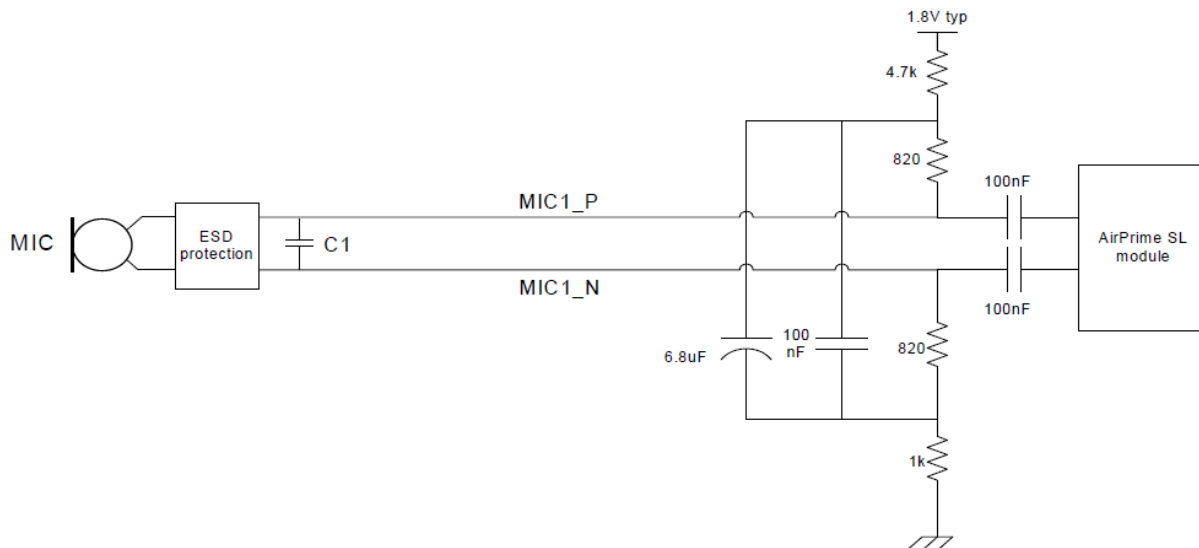


Figure 14. Example – MIC Differential Connection without an LC Filter

Capacitor C1 is highly recommended to eliminate TDMA noise and it must be connected close to the microphone.

The following table lists the recommended components to use in creating the LC filter.

Table 37. Recommended Components for a MIC Differential Connection

Component	Value	Notes
C1	12–33 pF	Must be tuned depending on the design.
C2, C3, C4	47 pF	Must be tuned depending on the design.
L1, L2	100 nH	Must be tuned depending on the design.

4.11.2.1.2. MIC Single-Ended Connection Example

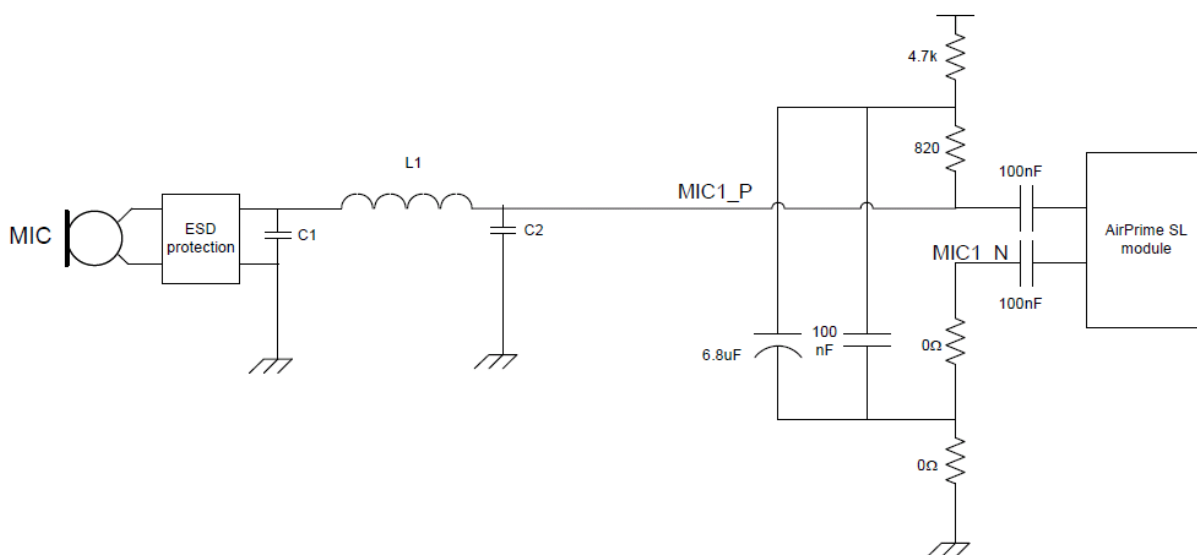


Figure 15. Example – MIC Single-Ended Connection with LC Filter

Single-ended connection considerations:

- Not recommended for improving TDMA noise rejection as it is usually difficult to eliminate TDMA noise from a single-ended design.
- LC filter (L1 and C2) is recommended (but not mandatory) to eliminate TDMA noise. If no filter is used, capacitor C2 must be removed and the coil replaced by 0 Ω resistors resulting in an equivalent circuit as shown in the following figure.

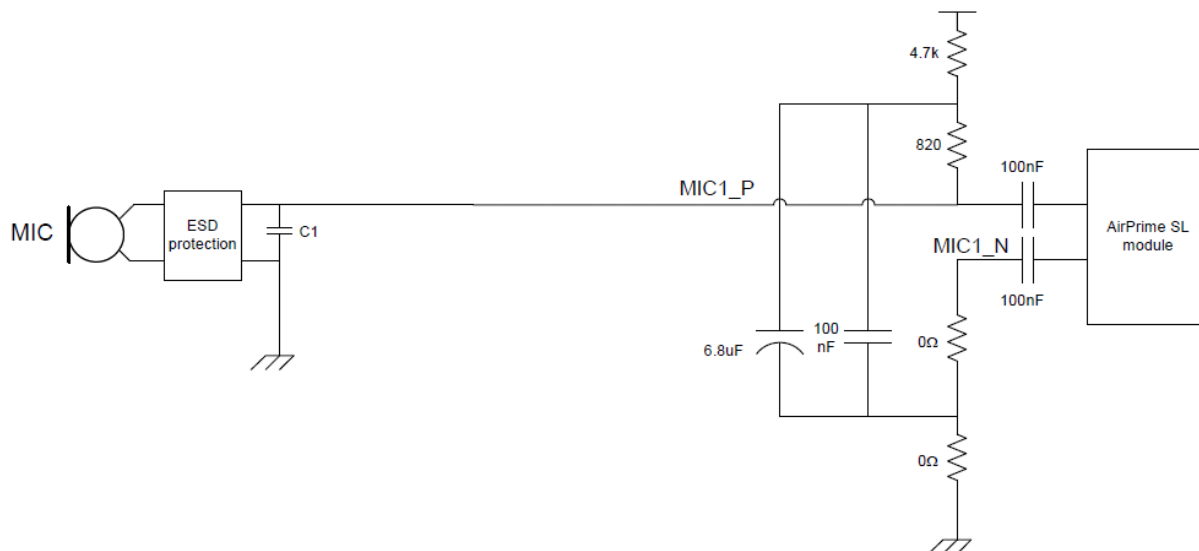


Figure 16. Example – MIC Single-Ended Connection without an LC Filter

Capacitor C1 is highly recommended to eliminate TDMA noise and it must be connected close to the microphone.

The following table lists the recommended components to use in creating the LC filter.

Table 38. Recommended Components for a MIC Single-Ended Connection

Component	Value	Notes
C1	12–33 pF	Must be tuned depending on the design.
C2	47 pF	Must be tuned depending on the design.
L1	100 nH	Must be tuned depending on the design.

4.11.3. Speaker Features

The speaker can be connected in either differential or single-ended mode:

- Differential mode—Default method (recommended). Rejects common mode noise and TDMA noise.
- Single-ended mode—Requires good ground plane, filtering, and shielding to avoid audio path disturbances. Experiences power loss (power is divided by 4 in a single-ended connection) compared to differential connection.

The gain of each speaker output channel is internally adjusted and can be tuned using AT commands. For more information on AT commands, see document [3] AirPrime MC8xxx Embedded Modules Extended AT Command Reference.

Discreet components (for example, resistors and capacitors) are not needed for this interface.

The following table lists the typical values of both speaker outputs.

Table 39. Speaker Information

Parameter	Typical	Unit	Connection
Z (SPK_P, SPK_N)	4	Ω	Single-ended mode
Z (SPK_P, SPK_N)	8	Ω	Differential mode

4.11.3.1. Speakers Output Power

Because SPK can provide more power, it can be connected in differential mode. The maximal specifications given below are available with the maximum power output configuration values set by AT command, and the typical values are recommended.

Caution: *It is mandatory not to exceed the maximal speaker output power and the speaker load must be in accordance with the gain selection (gain is controlled by AT command). Exceeding beyond the specified maximal output power may damage the AirPrime SL808X Embedded Module.*

4.11.3.2. SPK Speaker Output

SPK can have either a single-ended or a differential connection.

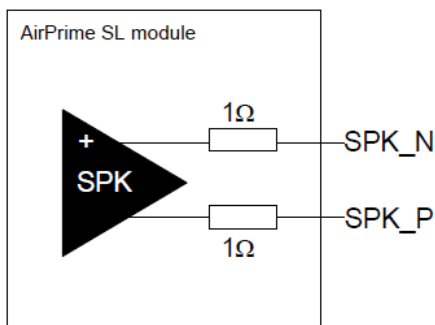


Figure 17. SPK Equivalent Circuit

The following table describes the speaker’s electrical characteristics.

Table 40. SPK (Receive) Path Characteristics

Parameter	Condition	Minimum	Typical	Maximum	Unit
DAC to SPK_P/SPK_N full-scale output	f=1.02 kHz, 0 dBFS input	1.127	1.265	1.419	Vrms
Gain error (absolute)	f=1.02 kHz, -13 dBFS input	-1		1	dB
SPK_P/SPK_N output power, 4% or less THD+N	f=1.02 kHz, 0 dBFS	39.7	50	63	mW
DAC to SPK_P/SPK_N gain error relative to gain at -13 dBFS input level	f=1.02 kHz, -60 dBFS	-1.2		1.2	dB
DAC to SPK_P/SPK_N output noise level	Input=-999 dBFS Fs ^a =8 kHz or 16 kHz; A-weighted			51	μVrms
DAC to SPK_P/SPK_N signal-to-noise ratio	Ratio of full-scale output to output noise level	86.8			dB
DAC to SPK_P/SPK_N power-supply rejection	0<f<20 kHz	65			dB
DAC + SPK_P/SPK_N Supply current	Rx DAC left enabled; Rx DAC right disabled; SPK_P/SPK_N enabled; input=-999 dBFS Fs ^a =8 kHz			7	mA

Parameter	Condition	Minimum	Typical	Maximum	Unit
DAC + SPK_P/SPK_N Supply current	Rx DAC left enabled; Rx DAC right disabled; SPK_P/SPK_N enabled; input=-999 dBFS; $F_s^a=16$ kHz			8	mA

a. F_s is the sampling frequency

If a single-ended connection is used, only one of either SPK outputs has to be chosen. The result is a maximal output power divided by 4.

4.11.3.3. Differential Connection Example

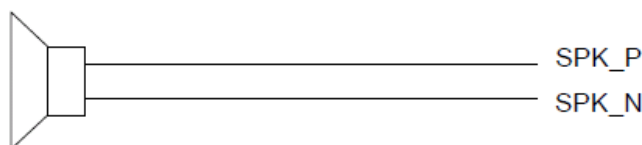


Figure 18. Example – SPK Differential Connection

The impedance of the speaker amplifier output in differential mode is $R \leq 1 \Omega \pm 10\%$.

Note that the connection between the speaker and the AirPrime SL808X Embedded Module pins must be designed to keep the serial impedance lower than 3Ω when it is connected in differential mode.

4.11.3.4. Single-Ended Connection Example

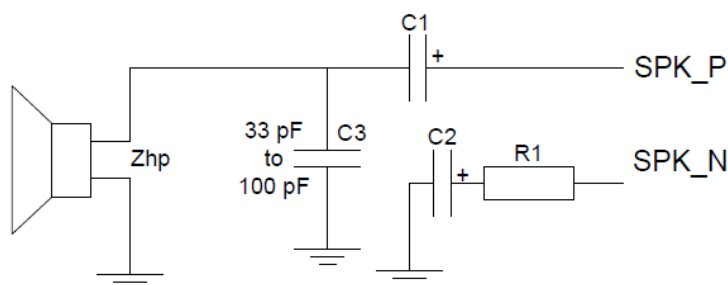


Figure 19. Example – SPK Single-Ended Connection

Take note of the following when connecting the speaker in single-ended mode:

- $6.8 \mu\text{F} < C1 < 47 \mu\text{F}$ (depending on the characteristics of the speaker and the output power)
- $C1 = C2$
- $R1 = Z_{hp}$

Again, note that using a single-ended connection includes losing power (-6dB) as compared to a differential connection.

In the case of a 32Ω speaker, a cheaper and smaller solution can be implemented where $R1 = 82 \Omega$ and $C2 = 6.8 \mu\text{F}$ (ceramic).

Also note that the connection between the speaker and the AirPrime SL808X Embedded Module pins must be designed to keep the serial impedance lower than 1.5Ω when it is connected in single-ended mode.

4.11.3.5. Recommended Characteristics

- Type: 10 mW, electro-magnetic
- Impedance: 8 Ω for hands-free
- Sensitivity: 110dB SPL minimum (0dB = 20 μ Pa)
- Frequency response must be compatible with GSM specifications

4.11.4. Supported Voice Features

The AirPrime SL808X Embedded Module modem supports the voice-related features listed in the following table; and Table 42 details its support for supplementary services.

Table 41. Supported Voice Features

Item	Comments
USSD (Unstructured Supplementary Services Data)	This is a GSM-specific capability that supports transmitting information over GSM network signalling channels.
Voice encryption	Both A5/1 and A5/2 voice encryption are supported.
SIM Application Tool Kit with proactive SIM commands (compliant to R96)	3GPP TS 11.14 SIM Application Toolkit commands are stored on the SIM. These commands enable the SIM card to proactively drive the GSM host device and support interactions between the network and the end user.
User-configurable audio prompts	Several audio features, such as 'Incoming Call' and 'New SMS message', can be configured in Watcher.
Multi-party calling	Up to 5 remote parties are supported on a single call, plus an additional party on hold (on a separate call).

Table 42. Supported Supplementary Services

Service	Supported By		
	Watcher/CnS	GSM Service Code	AT Command
Calling Line Identification Presentation (Caller ID)	Yes	Yes	Yes
Calling Line Identification Restriction (hides your ID on outgoing calls)	Yes	Yes	Yes
Call Waiting	Yes	Yes	Yes
Call Hold	Yes	Yes	Yes
Multi-party service	Yes	Yes	Yes
Call Forwarding			
Unconditional	Yes	Yes	Yes
on Mobile Subscriber Busy	Yes	Yes	Yes
on No Reply	Yes	Yes	Yes
on Mobile Subscriber Not Reachable	Yes	Yes	Yes

Service	Supported By		
	Watcher/CnS	GSM Service Code	AT Command
Call Barring			
All outgoing calls	Yes	Yes	Yes
Outgoing international calls	Yes	Yes	Yes
Outgoing international calls (except those directed to the home PLMN country)	Yes	Yes	Yes
All incoming calls	Yes	Yes	Yes
Incoming calls when roaming outside the home PLMN country	Yes	Yes	Yes

4.12. Digital Audio Interface (PCM)

(SL8080/80B/82/84 only)

The SL8080/80B/82/84 module's PCM audio interface features the following characteristics:

- Runs in master mode
- Supports Linear (13-bit), A-Law (8-bit), and μ -Law (8-bit) companding algorithms
- Supports 2.048 MHz short frame sync (PCM) and 128 kHz long frame sync (AUX_PCM) operation

Note: The PCM interface is not AC97-compliant.

Some PCM pins may be used to provide DCD, DTR, and DSR signals for 8-wire UART. See section 4.6.5 Configure the UART Interface for details.

Table 43. PCM Digital Audio Interface Connections^a

Pin	Signal	Type ^b	Description	Notes
64	PCM_SYNC	PD	PCM sync	8 KHz pulse that synchronizes frame data in/out.
65	PCM_DOUT	O	PCM output	Frame 'data out' relies on selected configuration mode.
66	PCM_DIN	PD	PCM input	Frame 'data in' relies on selected configuration mode.
67	PCM_CLK	O	PCM clock	2 MHz for primary PCM mode. Controls data transfer with the audio peripheral.

a. See Table 9 SL808X LGA Pad Pin Assignments^a for additional pin-specific details.

b. See Table 11 Pin Type Codes for type descriptions.

4.12.1. PCM Interface – Short Frame Sync (2.048 MHz)

The following figures and Table 44 describe the short frame sync (2.048 MHz) PCM interface.

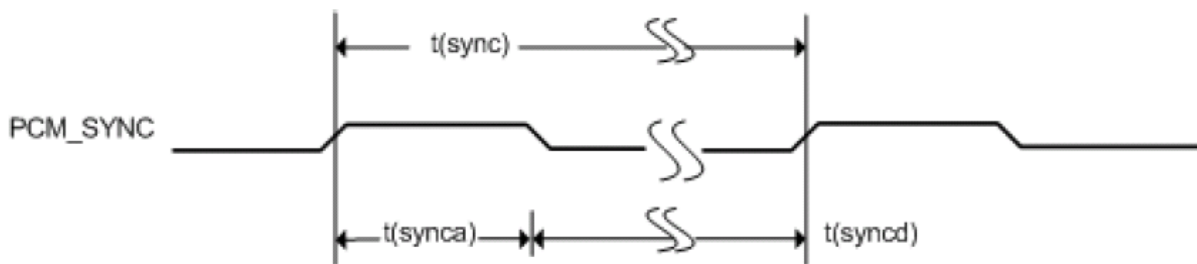


Figure 20. Timing Diagram – Short Frame Sync (PCM_SYNC)

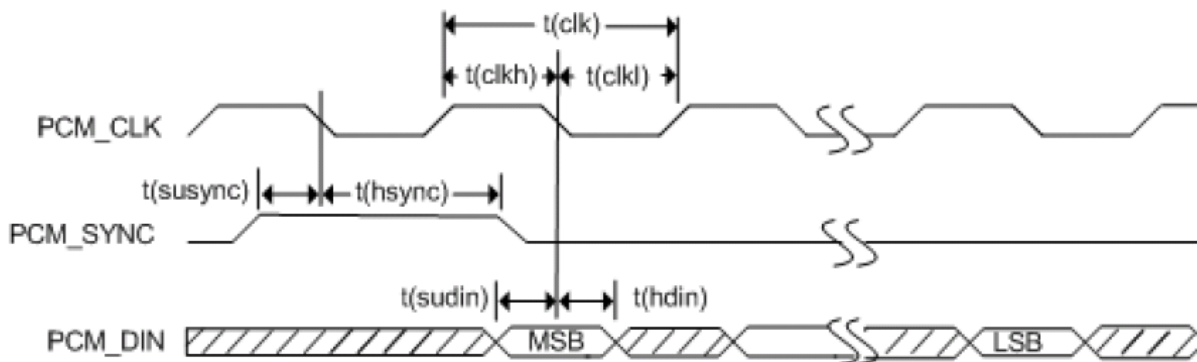


Figure 21. Timing Diagram – PCM_CODEC to SL808X

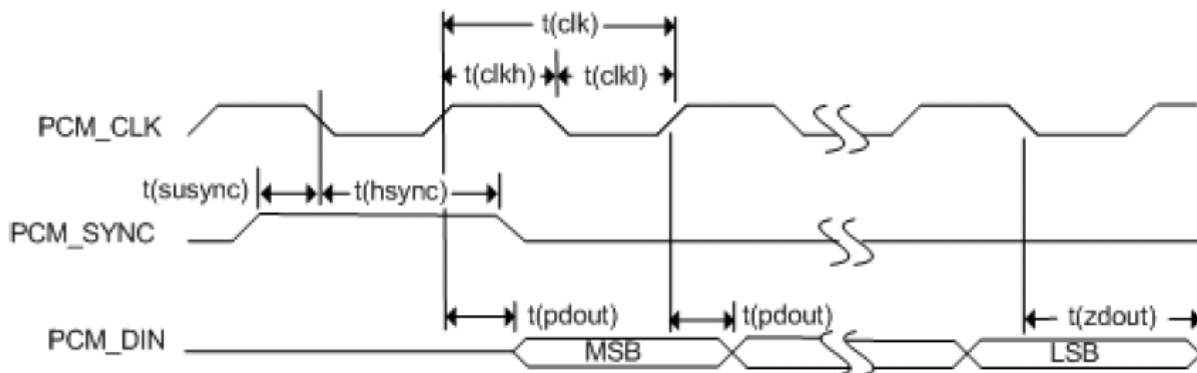


Figure 22. Timing Diagram – SL808X to External PCM_CODEC

Table 44. PCM_CODEC Short Frame Sync (2.048 MHz) Timing Parameters

Parameter	Condition	Minimum	Typical	Maximum	Unit
t(sync)	PCM_SYNC cycle time (PCM_SYNC_DIR=1)		125		μs
t(synca)	PCM_SYNC asserted time (PCM_SYNC_DIR=1)	400	500		ns
t(syncd)	PCM_SYNC de-asserted time (PCM_SYNC_DIR=1)		124.5		μs
t(clk)	PCM_CLK cycle time (PCM_CLK_DIR=1)		488		ns
t(clkh)	PCM_CLK high time (PCM_CLK_DIR=1)		244		ns

Parameter	Condition	Minimum	Typical	Maximum	Unit
t(clk)	PCM_CLK low time (PCM_CLK_DIR=1)		244		ns
t(susync)	PCM_SYNC setup time to PCM_CLK falling (PCM_SYNC_DIR = 1, PCM_CLK_DIR = 1)	60			ns
t(hsync)	PCM_SYNC hold time after PCM_CLK falling (PCM_SYNC_DIR = 1, PCM_CLK_DIR = 1)	60			ns
t(sudin)	PCM_DIN setup time to PCM_CLK falling	50			ns
t(hdin)	PCM_DIN hold time after PCM_CLK falling	10			ns
t(pdout)	Delay from PCM_CLK rising to PCM_DOUT valid			350	ns
t(zdout)	Delay from PCM_CLK falling to PCM_DOUT HIGH-Z		160		ns

4.12.2. Auxiliary PCM (Long Frame Sync, 128 kHz)

(SL8080/80B/82/84 only)

The following figures and Table 45 describe the long frame sync (128 kHz) PCM interface.

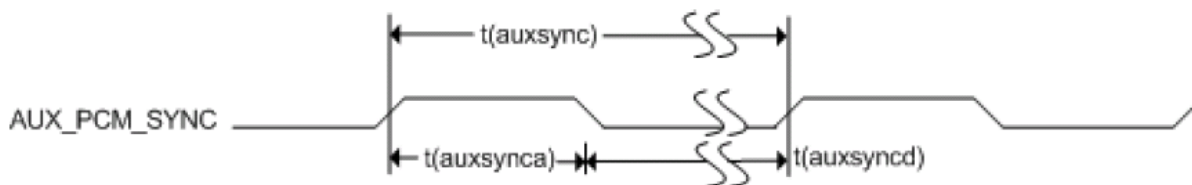


Figure 23. Timing Diagram – Long Frame Sync (AUX_PCM_SYNC)

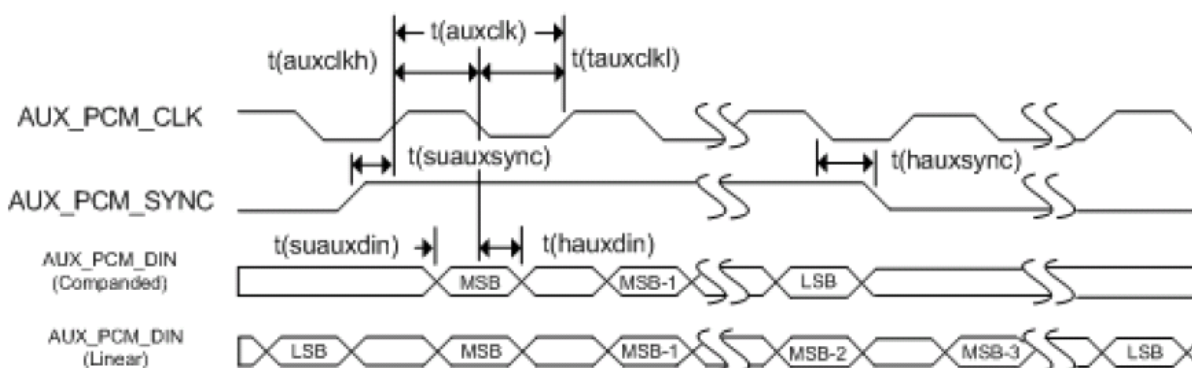


Figure 24. Timing Diagram – AUX_PCM_CODEC to SL808X

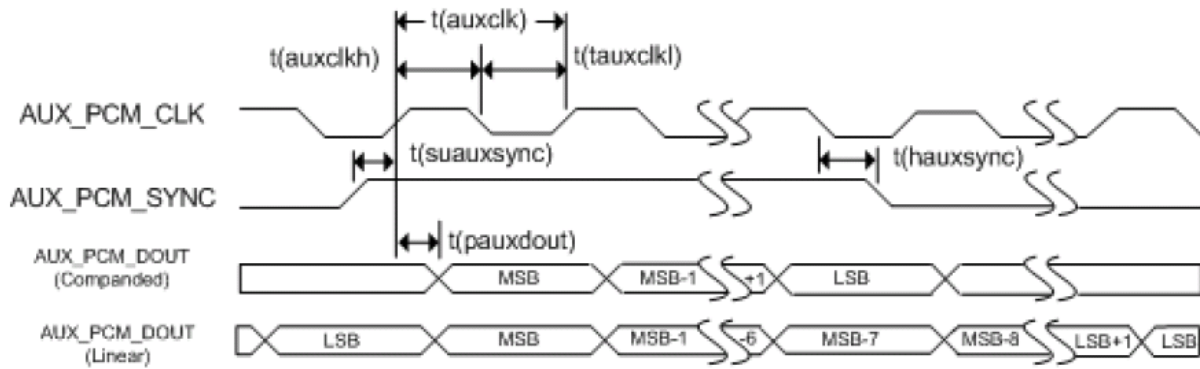


Figure 25. Timing Diagram – SL808X to AUX_PCM_CODEEC

Table 45. AUX_PCM_CODEEC Timing Parameters

Parameter	Condition	Minimum	Typical	Maximum	Unit
t(auxsync)	AUX_PCM_SYNC cycle time		125		μs
t(auxsynca)	AUX_PCM_SYNC asserted time	62.4	62.5		μs
t(auxsyncd)	AUX_PCM_SYNC de-asserted time	62.4	62.5		μs
t(auxclk)	AUX_PCM_CLK cycle time		7.8		μs
t(auxclkh)	AUX_PCM_CLK high time	3.8	3.9		μs
t(auxclk)l	AUX_PCM_CLK low time	3.8	3.9		μs
t(suauxsync)	AUX_PCM_SYNC setup time to AUX_PCM_CLK rising	1.95			μs
t(hauxsync)	AUX_PCM_SYNC hold time after AUX_PCM_CLK rising	1.95			μs
t(suauxdin)	AUX_PCM_DIN setup time to AUX_PCM_CLK falling	70			ns
t(hauxdin)	AUX_PCM_DIN hold time after AUX_PCM_CLK falling	20			ns
t(pauxdout)	Propagation delay from AUX_PCM_CLK AUX_PCM_DOUT valid			50	ns

4.13. JTAG Interface

The AirPrime SL808X Embedded Module includes a six-wire JTAG interface.

A six-wire JTAG ZIF connector may be installed to allow Sierra Wireless to use the interface for debugging/testing. (See section 13.1 JTAG Connector for recommended suppliers.)

If platform issues arise, contact Sierra Wireless for assistance.

4.14. Short Message Service (SMS)

The following table summarizes the SL808X module's compliance with specific SMS features:

Table 46. SMS Features

Feature	Supported
Mobile-terminated SMS	✓
Mobile-originated SMS	✓
Point-to-Point messaging	✓
Cell Broadcast messaging	* * Not supported

4.15. UMTS Radio Access Bearers Supported

The SL808X modem supports the majority of the radio access bearers specified in 3GPP TS 34.108. If you require a detailed list, contact Sierra Wireless.



5. Signals and Indicators

5.1. Overview

This chapter describes signals for control and handshaking of the AirPrime SL808X Embedded Module from the host (Table 47 Available Signals), and describes how the system implements Smart Error Detection using those signals.

Table 47. Available Signals

Name	AT Command Support	Open AT Interface
Power ON/OFF Signal (POWER_ON_N)		
Reset Signal (SYSTEM_RESET_N)	✓	
Wake Signal (WAKE_N)	✓	
Disable Signal (W_DISABLE_N)	✓	
Buzzer Output (BUZZER_N)	✓	
Flash LED (LED_FLASH)	✓	
Power Rail (VREF_1V8)		
Reserved		
External Interrupt ^a	✓	✓

a. Only available with the Open AT Application Framework.

5.2. Power ON/OFF Signal (POWER_ON_N)

The POWER_ON_N signal is an active-low input that controls the module's power state.

Table 48. POWER_ON_N Signal Features

Feature	Details
Purpose	Power modem on/off
Implementation	<ul style="list-style-type: none">• Digital input with internal pull up.• 1.8 V logic• Active low• Signal driven only by open-drain output from the host.

5.2.1. Pin Descriptions

The following table describes the POWER_ON_N signal pins.

See section 4.2 Digital I/O Electrical Information for 1V8 voltage characteristics.

Table 49. ON/~OFF Signal Pin Description

Pin	Signal	I/O	I/O Type	Description
43	POWER_ON_N	I	CMOS	Embedded module power-on

5.2.2. Electrical Characteristics

Caution: All external signals must be inactive when the AirPrime SL808X Embedded Module is OFF to avoid any damage when starting and to allow the embedded module to start and stop correctly.

Refer to Table 9 SL808X LGA Pad Pin Assignmentsa for basic characteristics (type, voltage).

5.2.3. Application Notes

Caution: This section is under review and subject to change.

5.2.3.1. Signal Timing

Figure 26 and Table 50 describe the timing sequence for powering the device on and off.

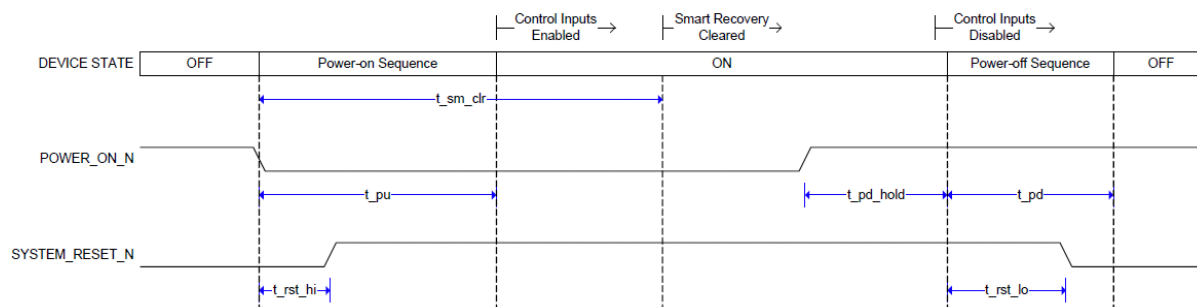


Figure 26. POWER_ON_N Signal Timing

Table 50. POWER_ON_N Signal Timing Parameters

Parameter	Description	Period		
		Min	Typ	Max
t _{pu}	Power up—Time required to boot device and reach device ready state.	5 s	-	7 s
t _{pd_hold}	Power down hold—Time required to acknowledge POWER_ON_N deassertion.	500 ms	-	-
t _{pd}	Power down—Time required to power device off after POWER_ON_N is acknowledged	700 ms	10 s	Note ^a

Parameter	Description	Period		
t_sm_clr	Smart recovery cleared—Time between booting device and reaching smart recovery mechanism disabled state.	-	20 s	35 s
t_rst_hi	Reset high—Time between POWER_ON_N assertion and SYSTEM_RESET_N deassertion.	-	400 ms	-
t_rst_lo	Reset low—Time between initiating power-off sequence and SYSTEM_RESET_N assertion.	-	1 s	-

a. Maximum t_{pd} is proportional to any load capacitance on the VREF_1.8V. It is recommended that powering on should be delayed until after the VREF_1.8V has fully decayed to 0 V.

For a successful power ON, the QSC62x0 expects the POWER_ON_N to be low until the PS_HOLD signal goes high. No specifications are available for the time delay between the VBATT going high and POWER_ON_N going low. This is because if POWER_ON_N is pulled low before VBATT goes high, the QSC62x0 will not power ON. Instead, it will wait until the VPH_PWR node crosses the UVLO threshold and if the POWER_ON_N pin is pulled low during this time, the QSC62x0 will start the power ON sequence. If the POWER_ON_N pin stays low until PS_HOLD goes high, power ON will be successful.

Sierra Wireless recommends for customers to tie POWER_ON_N to ground permanently in applications for powering ON the card whenever there is a valid supply voltage on the device.

5.3. Reset Signal (SYSTEM_RESET_N)

The SYSTEM_RESET_N signal is a bi-directional line that initiates a modem reset or indicates the modem’s reset condition.

Table 51. Reset Signal Features

Feature	Details
Purpose	Reset modem <ul style="list-style-type: none"> Used by host to reset the modem.
Implementation	<ul style="list-style-type: none"> Digital input 1.8 V logic Host to provide a 100 kΩ pull-up resistor Initiates modem reset when driven externally. Indicates modem processor reset condition when not driven externally. Internally driven. Logic high state may be overridden by pulling it low via an open drain sink that is capable of ≥ 10 mA. <hr/> <i>Note: This pin is also required for JTAG programming.</i>

Caution: Holding SYSTEM_RESET_N low for long periods of time could result in the module being held in a high power consumption state. Current draw varies depending on hardware state at time of signal assertion; > 50 mA is not uncommon.

5.3.1. Pin Descriptions

The following table describes the SYSTEM_RESET_N signal pin.

Table 52. Reset Signal Pin Description^a

Pin	Signal	I/O	I/O Type	Description
63	SYSTEM_RESET_N	I	Digital	Embedded module reset

a. See Table 9 SL808X LGA Pad Pin Assignments^a for additional pin-specific details.

5.3.2. Electrical Characteristics

The following table describes the reset signal's electrical characteristics.

Refer to Table 9 SL808X LGA Pad Pin Assignments^a for basic characteristics (type, voltage).

Table 53. Reset Signal Electrical Characteristics

Parameter	Minimum	Typical	Maximum	Unit
V_H^a	0.57			V
V_{IL}	0		0.57	V
V_{IH}	1.33			V

a. V_H : Hysteresis voltage

5.3.3. Application Notes

Caution: *This section is under review and subject to change.*

5.3.3.1. Signal Timing

Figure 27 and Table 54 describe the timing sequence for resetting the device.

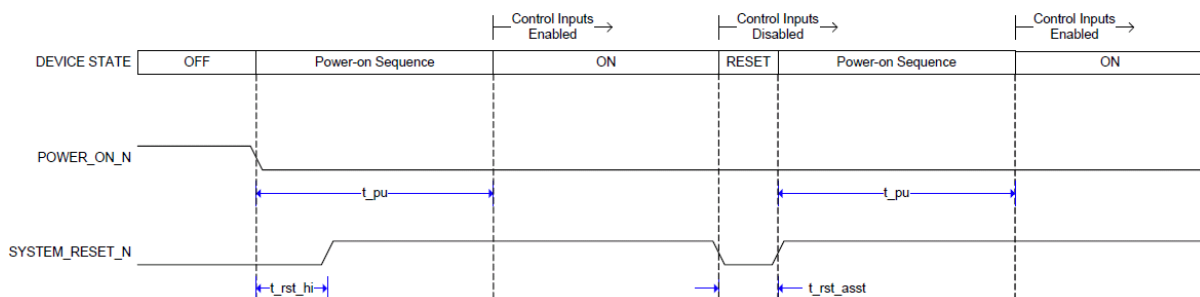


Figure 27. SYSTEM_RESET_N Signal Timing

Table 54. SYSTEM_RESET_N Signal Timing Parameters

Parameter	Description	Period		
		Min	Typ	Max
t _{pu}	Power up—Time required to boot device and reach device ready state.	5 s	-	7 s
t _{rst_hi}	Reset high—Time between POWER_ON_N assertion and SYSTEM_RESET_N deassertion.	-	400 ms	-
t _{rst_asst}	Reset assert—Time required to initiate a reset by holding SYSTEM_RESET_N low externally.	40 ms	100 ms	-

Note: An operating system reset is preferred to a hardware reset.

5.3.3.2. General Notes

- This reset line should not be driven unless the host needs to enforce a baseband reset by asserting a logic low.
- An open collector or open drain transistor can be used. If an open collector is chosen, T1 can be a ROHM DTC144EE.

Table 55. Reset Settings

Reset Command	SYSTEM_RESET_N (Pin 63)	Operating Mode
1	0	Reset activated
0	1	Reset inactive

5.4. Wake Signal (WAKE_N)

This signal is used by the AirPrime SL808X Embedded Module to wake the host when a predetermined condition is satisfied (such as when a call is received).

Table 56. Wake Signal Features

Feature	Details
Purpose	Wake Host interface <ul style="list-style-type: none"> • Wake host when a predetermined condition is satisfied (for example, when a call is received).
Implementation	<ul style="list-style-type: none"> • Low = On • Active low, 1.8 V logic. • During the powered-off state, this pin may not be in a high impedance state. The host side must implement appropriate measures to accommodate this.

5.4.1. Pin Descriptions

The following table describes the wake signal pin.

Table 57. Wake Signal Pin Description^a

Pin	Signal	I/O	I/O Type	Description
61	WAKE_N	O	Digital	Wake Host interface

a. See Table 9 SL808X LGA Pad Pin Assignments^a for additional pin-specific details.

5.4.2. Electrical Characteristics

Refer to Table 9 SL808X LGA Pad Pin Assignments^a for basic characteristics (type, voltage).

5.5. Disable Signal (W_DISABLE_N)

This signal is used by the host to disable (or enable) the AirPrime SL808X Embedded Module's RF connection.

Table 58. Wireless Disable Signal Features

Feature	Details
Purpose	Wireless disable <ul style="list-style-type: none"> Used by host to disable or enable low power mode ('airplane mode').
Implementation	<ul style="list-style-type: none"> Low = Put module in airplane mode Digital input. Active low 1.8 V logic Host to provide a pull-up resistor of 50-100 kΩ.

5.5.1. Pin Descriptions

The following table describes the wireless disable signal pin.

Table 59. Wireless Disable Signal Pin Description^a

Pin	Signal	I/O	I/O Type	Description
62	W_DISABLE_N	I	Digital	Wireless disable

a. See Table 9 SL808X LGA Pad Pin Assignments^a for additional pin-specific details.

5.5.2. Electrical Characteristics

Refer to Table 9 SL808X LGA Pad Pin Assignments^a for basic characteristics (type, voltage).

5.5.3. Application Notes

Caution: This section is under review and subject to change.

5.5.3.1. Signal Timing

Figure 28 and Table 60 describe the timing sequence for entering/exiting low power mode ('airplane mode').

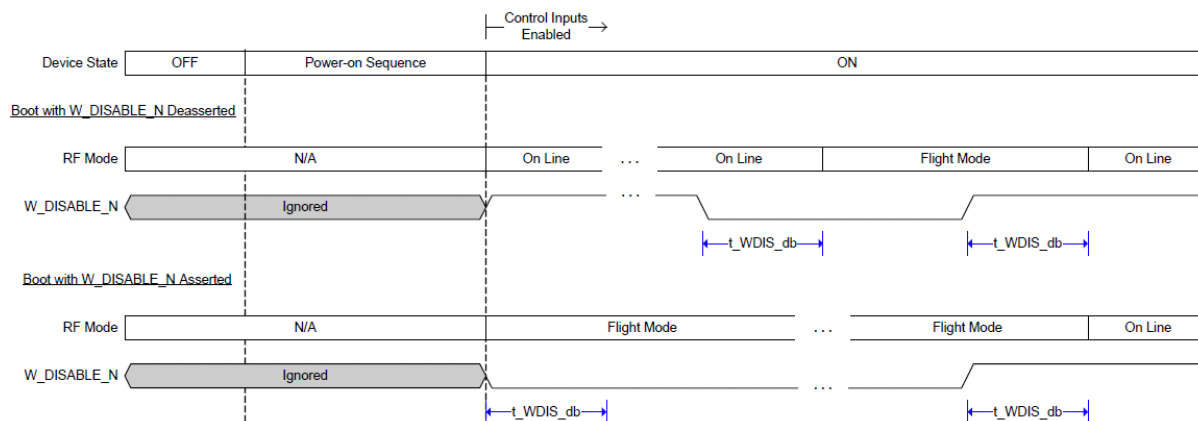


Figure 28. W_DISABLE_N Signal Timing

Table 60. W_DISABLE_N Signal Timing Parameters

Parameter	Description	Period		
		Min	Typ	Max
t_WDIS_db	W_DISABLE_N Debounce—Time between changing W_DISABLE_N logic level and RF mode changing.	5 s	-	7 s

5.6. Buzzer Output (BUZZER_N)

This signal is used in the implementation of a buzzer circuit.

Table 61. Buzzer Signal Features

Feature	Details
Purpose	Enable off-board buzzer
Implementation	Binary I/O used by host as a buzzer enable line

5.6.1. Pin Descriptions

The following table describes the wireless disable signal pin.

Table 62. Buzzer Output Pin Description^a

Pin	Signal	I/O	I/O Type	Reset State
68	BUZZER_EN	O	Digital	Z

a. See Table 9 SL808X LGA Pad Pin Assignments^a for additional pin-specific details.

5.6.2. Electrical Characteristics

Refer to Table 9 SL808X LGA Pad Pin Assignments^a for basic characteristics (type, voltage).

5.7. Flash LED (LED_FLASH)

This digital output may be used to drive a general purpose LED.

Table 63. LED Signal Features

Feature	Details
Purpose	Flash LED output <ul style="list-style-type: none"> Used by host to control LED status by controlling LED diode bias.
Implementation	<ul style="list-style-type: none"> Digital output. 1.8 V logic Source/sink maximum—8 mA LED behavior can be configured by adjusting software settings. LED pattern can be used to indicate network connection status. Blink rate up to 10 Hz supported

5.7.1. Pin Descriptions

The following table describes the LED signal pin.

Table 64. LED_FLASH Pin Description^a

Pin	Signal	I/O	I/O Type	Reset State	Description
60	LED_FLASH	O	Digital	1 and Undefined	LED driving

a. See Table 9 SL808X LGA Pad Pin Assignments^a for additional pin-specific details.

5.7.2. Electrical Characteristics

The following table describes the LED_FLASH signal's electrical characteristics.

Refer to Table 9 SL808X LGA Pad Pin Assignments^a for basic characteristics (type, voltage).

Table 65. LED_FLASH Signal Electrical Characteristics

Parameter	Condition	Minimum	Typical	Maximum	Unit
V _{OL}		0		0.45	V
V _{OH}		1.35		1.80	V
I _{OUT}				8	mA

5.8. External Interrupt

Note: This feature is only available with the Open AT Application Framework.

The AirPrime SL808X Embedded Module provides three external interrupt inputs, which can be activated on the:

- High to low level transition
- Low to high level transition
- Low to high and high to low level transitions

When used, the interrupt inputs must not be left open; and when they are not used, they must be configured as GPIOs.

5.8.1. Pin Description

The following table describes the external interrupt pins.

Table 66. External Interrupt Pin Descriptions^a

Pin	Signal	I/O Type	Multiplexed with	Reset State ^b	Description
1	INT2	1V8	GPIO_3	Z	External interrupt
2	INT1	1V8	GPIO_2	Z	External interrupt
3	INT0	1V8	GPIO_1	Z	External interrupt

a. See Table 9 SL808X LGA Pad Pin Assignments^a for additional pin-specific details.

b. See Table 12 Reset State Definition for state definitions.

5.8.2. Electrical Characteristics

Refer to Table 9 SL808X LGA Pad Pin Assignments^a for basic characteristics (type, voltage).

5.8.3. Application Notes

The external interrupt pins are high impedance input types so it is important to set the interrupt input signals with pull-up or pull-down resistors if they are driven by an open drain, an open collector or by a switch. If the interrupt signals are driven by a push-pull transistor, then no pull-up or pull-down resistors are necessary.

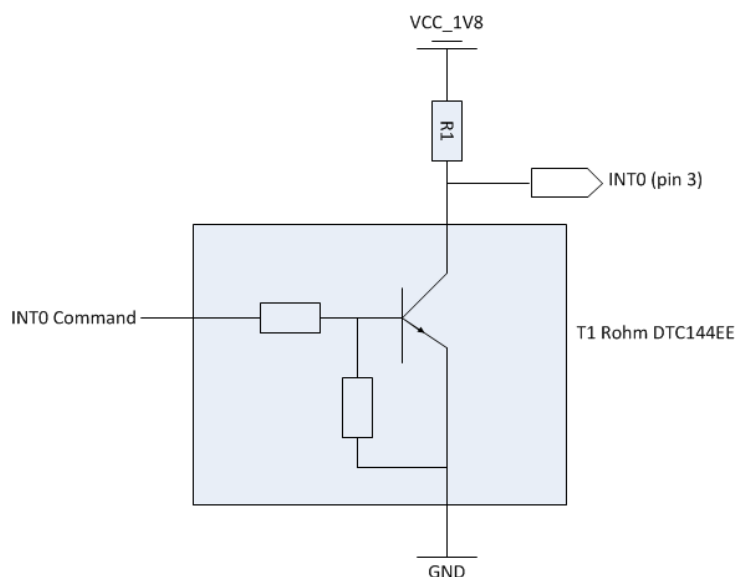


Figure 29. Example of INT0 Driven by an Open Collector

Where:

- The value of R1 can be 47kΩ
- T1 can be a ROHM DTC144EE open collector transistor

5.9. Power Rail (VREF_1V8)

The AirPrime SL808X Embedded Module includes a rail that the host uses to provide a 1.8 V logic reference (maximum limit) for the pins listed in Table 68 1.8 V Connector Pins.

5.9.1. Pin Descriptions

The following table describes the VREF_1V8 output pin.

See section 4.2 Digital I/O Electrical Information for 1V8 voltage characteristics and reset state definitions.

Table 67. VREF_1V8 Pin Descriptions

Pin	Signal	I/O	I/O Type	Description
10	VREF_1V8	O	Supply	1.8 V digital supply

Table 68. 1.8 V Connector Pins

Pin	Signal Name	Description
1	GPIO_3	General Purpose I/O

Pin	Signal Name	Description
2	GPIO_2	General Purpose I/O
3	GPIO_1	General Purpose I/O
6	EXT_VREG_USIM ^a	USIM VCC supply
7	EXT_USIM_RESET ^a	USIM reset
8	EXT_USIM_DATA ^a	USIM I/O pin
9	EXT_USIM_CLK ^a	USIM clock
11	SPI_CS_N	SPI chip select
12	SPI_CLK	SPI clock
13	SPI_DATA_MOSI	SPI data (Master Output / Slave Input)
14	SPI_DATA_MISO	SPI data (Master Input / Slave Output)
45	UART1_TXD	UART Transmit Data
46	UART1_RXD	UART Receive Data
47	UART1_CTS_N	UART Clear To Send
48	UART1_RTS_N	UART Request To Send
60	LED_FLASH	LED driver
61	WAKE_N	Wake Host Interface
62	W_DISABLE_N	Wireless disable
63	SYSTEM_RESET_N	Reset
64	PCM_SYNC	PCM sync
65	PCM_DOUT	PCM data output
66	PCM_DIN	PCM data input
67	PCM_CLK	PCM clock

a. USIM interface may be configured as 1.8 V or 3.0V.

Each digital output has a maximum current of 8 mA.

5.9.2. Electrical Characteristics

The following table describes the power rail signal's electrical characteristics.

Table 69. VREF_1V8 Signal Electrical Characteristics

Parameter		Minimum	Typical	Maximum	Unit
VREF_1V8	Output voltage	1.65	1.8	1.95	V
	Output current			1	mA

5.9.3. Application Notes

Caution: *This section is under review and subject to change.*

5.9.3.1. VREF_1V8 – 1.8 V Logic Reference

Note: *VREF_1V8 is only available when the AirPrime SL808X Embedded Module is ON.*

The following are good design practices to consider:

- Total current draw must be < 1 mA.
- If used as a reference only (host provides its own pull-up voltage rail), a 100 Ω resistor should be put in series.
- Depending on the host PCB trace length for this signal, PCB provision for decoupling capacitors may be required.

5.10. Reserved

The AirPrime SL808X Embedded Module includes pins that may not be used in your host design. These pins should be handled in the following ways:

- Pins marked 'Reserved - DNC'—Leave these pins untouched. (See Table 9 SL808X LGA Pad Pin Assignmentsa for pin assignments/names.)
- Unused inputs/outputs on specific interfaces (USB, USIM, etc.)—Leave as no-connects.



6. Power Consumption

Note: All specifications in these tables are preliminary, based on chipset published expectations.

The power consumption numbers listed in this section are for the AirPrime SL808X Embedded Module connected to the host PC via USB. The module does not have its own power source and depends on the host device for power. Typical values are measured at room temperature, and minimum and maximum values are measured over the entire operating temperature range. For a description of input voltage requirements, see section 3.1 Power Supply.

Table 70. Averaged Standby DC Power Consumption^a

Signal	Description	Bands	Typ	Peak	Units	Notes/Configuration
VCC	Standby current consumption with Sleep mode activated (assumes USB bus is fully suspended during measurements)					
	HSDPA / WCDMA	UMTS bands	3.8	140	mA	<ul style="list-style-type: none"> DRX cycle = 8 (2.56 s)
	GSM / GPRS / EDGE	GSM bands	2.4	3145	mA	<ul style="list-style-type: none"> MFRM = 5 (1.175 s)
	Standby current consumption with Sleep mode deactivated (assumes USB bus is fully suspended during measurements)					
	HSDPA / WCDMA	UMTS bands	65	160	mA	<ul style="list-style-type: none"> DRX cycle = 8 (2.56 s) Module power up and idle (Assumes sleep mode is never entered)
	GSM / GPRS / EDGE	GSM bands	65	165	mA	<ul style="list-style-type: none"> MFRM = 5 (1.175 s) Module power up and idle (Assumes sleep mode is never entered)
	Low Power Mode (LPM) / Offline Mode					
	RF disabled, but module is operational		2	5	mA	<ul style="list-style-type: none"> State is entered when Watcher shuts down / turns off the radio. LPM is the lowest possible ('rock bottom') state in Sleep mode.

a. All measurements are preliminary/estimated non-optimized values.

Table 71. Averaged Call Mode Data DC Power Consumption^a

Mode	Band	Tx Power	Current (at 3.6V)		Conditions
			Peak (mA) ^b	Average (mA)	
WCDMA ^c	Band 1	+23	550	500	
		0	190	190	
	Band 8	+23	550	500	
		0	180	180	

Mode	Band	Tx Power	Current (at 3.6V)				Conditions	
			Peak (mA) ^b	Average (mA)				
HSDPA ^c	Band 1	+23	570	520				
		0	210	210				
	Band 8	+23	570	520				
		0	200	200				
GSM / GPRS ^d				1 slot	2 slots	3 slots	4 slots	
	850	+32	1320	220	360	-	-	<ul style="list-style-type: none"> • Class 10 • 50 ohms
	900	+32	1610	260	425	-	-	
	1800	+30	1000	180	285	-	-	
	1900	+30	860	165	260	-	-	
EDGE	850	+27	860	170	260	340	400	<ul style="list-style-type: none"> • Class 12 • 50 ohms
	900	+27	960	180	280	360	430	
	1800	+26	740	150	230	290	340	
	1900	+26	660	150	220	270	300	

- a. Includes USB bus current.
- b. Peak consumption averaged over 100 μ s.
- c. Current consumption increases by 50 mA with a 6 dB return loss-based load-pull.
- d. GSM mode peak current increases to 2.2A (from nominal 1.6–1.7A) with 6 dB return loss-based load-pull.

Table 72. Miscellaneous DC Power Consumption^a

Signal	Description	Band	Typ	Units	Notes/Configuration
VCC	Module OFF leakage current	All bands	35	μ A	<ul style="list-style-type: none"> • Full operating temperature range
	USB transmit current	All bands	10 ^b	mA	<ul style="list-style-type: none"> • Full speed USB connection, C_L = 50 pF on D+ and D- signals

- a. All measurements are preliminary values.
- b. Typical value for MC8790 modem used as estimate.

Table 73. Supported GPRS / EDGE Power Classes

Feature	Notes
EGSM 900/GSM 850 Power Class 4	2 W 33 dBm
GSM 1800/1900 Power Class 1	1 W 30 dBm
EDGE Power Class for 850/900 MHz	Class E2 ^a ; 27 dBm, 0.5 W
EDGE Power Class for 800/1900 MHz	Class E2 ^a ; 26 dBm, 0.4 W

- a. E2 power class applies to 8PSK modulation.

6.1. Power States

The SL808X module has five power states as detailed in the following table.

Table 74. Supported SL808X Power States

State	Description	Host Powered	Modem Running	USB Interface Active	RF Enabled
Normal	<ul style="list-style-type: none"> Capable of placing/receiving calls or establishing data connections on network USB interface is fully active Current consumption in a call or data connection is affected by: <ul style="list-style-type: none"> Radio band in use Tx power Receive gain settings Data rate Number of active Tx time slots Module defaults to Normal state when VCC is first applied, if POWER_ON_N is held low. 	✓	✓	✓	✓
Airplane Mode (RF off)	<ul style="list-style-type: none"> 'Airplane' mode—Rx/Tx are disabled; USB interface is active State entered automatically when critical voltage/temperature thresholds are exceeded. Host should consider powering off module to prevent damage to unit. 	✓	✓	✓	✗
Sleep (Idle Mode)	<ul style="list-style-type: none"> Normal module state between RF activity Module cycles between wake (polling the network) and sleep, at network provider-determined interval. 	✓	✓	✗	✗
Off	<ul style="list-style-type: none"> Host power is connected Module is powered down (drawing minimal current from host power supply) 	N/A	✗	✗	✗
Disconnected	<ul style="list-style-type: none"> Host power is disconnected from module All module-related voltages are at 0 V. 	✗	✗	✗	✗

6.1.1. Power State Transitions

The module monitors supply voltage and operating temperature and notifies the host when critical threshold limits are exceeded. (See Table 75 for details.)

Power state transitions may occur:

- Automatically, when critical supply voltage or module temperature trigger levels are encountered. See Figure 30 for details.
- Under host control, using available AT or CnS commands in response to user choices (for example, opting to switch to airplane mode) or operating conditions.

Table 75. Power State Transitions (including voltage / temperature trigger levels)

Transition	Voltage		Temperature		Notes
	Trigger	V	Trigger	°C	
Normal to Low Power	VOLT_HI_CRIT	4.35	TEMP_LO_CRIT	-25	<ul style="list-style-type: none"> • RF suspended • CNS_RADIO_POWER notification issued^a
	VOLT_LO_CRIT	3.00	TEMP_HI_CRIT	108	
Low Power to Normal	VOLT_HI_NORM	3.90	TEMP_NORM_LO	-15	<ul style="list-style-type: none"> • RF resumed • CNS_RADIO_POWER notification issued^a
Low Power to Normal or Remain in Normal (remove warnings)	VOLT_LO_NORM	3.60	TEMP_HI_NORM	85	
Normal (issue warning)	VOLT_LO_WARN	3.40	TEMP_HI_WARN	95	
Power off/on (host-initiated)	-	-	-	-	<ul style="list-style-type: none"> • Power off recommended when supply voltage or module operating temperature is critically low or high.

a. Notification issued only if previously enabled. See document [4] AirPrime UMTS MiniCard CnS Reference for details.

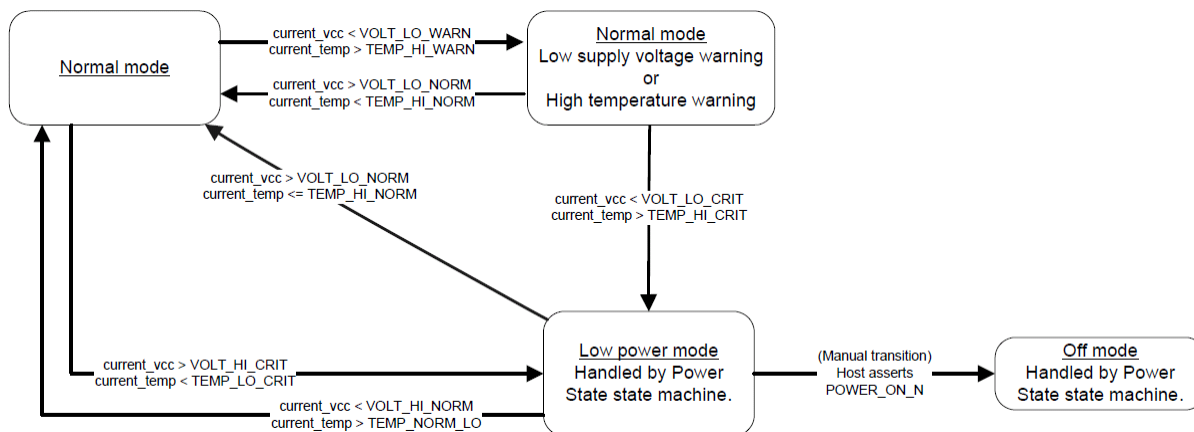


Figure 30. Automatic ("Triggered") Power State Transitions



7. Network Technology Specifications

7.1. UMTS WCDMA FDD Specifications

The SL808X supports the common WCDMA FDD specifications listed in the following table.

Table 76. Supported WCDMA FDD Specifications

Item
Physical layer specifications
DL Channels: BCH, PCH, FACH, DCH, AICH, CPICH
UL Channels: RACH, DCH
Measurement for PCCPCH RSCP RSCP/SIR
BTFD
CCTrCH As defined by examples in 25.944
Multifinger support
Cell reselection
Soft handover
Power control
PICH / DRX
Measurement for SFN / CFN timing, SFN / SFN timing
Cell selection
RLC specifications
TM / UM / AM
Max AM entities (4) <ul style="list-style-type: none"> • 3 for signalling • 1 for user data
Only timer based polling for AM
No timer based SDU discard for TM / UM / AM
Poll PU polling for AM
Poll prohibit
Polling options: Last ReTX PU Poll, Poll Window, Poll SDU
Status report transfer: Timer Status, Status Prohibit, Missing PU indicator
Reset procedure: Indication to RRC
Suspend / Resume
Timer based SDU discard (UM / AM / TM)
Status report transfer: Piggybacked Status PDUs, EPC based transfer
SUFIs: Sending BITMAP and RLIST
Start / stop for all three modes
RRC Specifications
Cell selection
RRC connection establishment
RRC connection release
System information processing

Item
Idle mode paging
Dedicated mode paging
Initial direct transfer
Uplink direct transfer
Downlink direct transfer
Signalling connection release
Signalling connection release request
Radio bearer establishment
Radio bearer release
Cell update
UE capability enquiry
Transmission of UE capability
Cell reselection
Measurement control
Measurement reporting
Soft HO/Active Set update
DRX mode
NV support for RRC channel scan
Radio bearer reconfiguration
Transport channel reconfiguration
Physical channel reconfiguration
UTRAN mobility information
Integrity protection
Security mode control
Encryption: UEA1
Integrity algorithm: U1A11

7.2. Supported Specifications

The SL808X supports the specifications listed in Table 77 Supported GSM / GPRS Specifications, as well as Enhanced Network Selection (ENS), and Enhanced Operator Name String (EONS).

EONS allows the operator to define the operator name displayed for any registered network based on the MCC, MNC, and LAI on which the MS is currently registered. Strings that can be displayed when a MS is registered on a network are:

- Enhanced Operator Name String (EONS) from SIM
- Operator Name String (ONS) from SIM
- Service Provider Name (SPN) from SIM
- Network Identity and Time Zone (NITZ) as broadcast by network
- String from internal lookup table in UE

Table 77. Supported GSM / GPRS Specifications

Item	Comments
8PSK modulation	Octagonal Phase Shift Keying Coding schemes MCS1-4 are GMSK and MCS5-9 are 8PSK.
GPRS header compression	Data packet header compression supported
3GPP compliance	Protocol stack supports the requirements of: <ul style="list-style-type: none"> GPRS/EDGE: 3GPP Release 99 and GERAN Feature Package #1 WCDMA: Release 5
GPRS operation mode class B	Class B terminals support either circuit-switched or packet switched traffic (with simultaneous network attachment) but do not support both kinds of traffic simultaneously.
Link Adaptation (LA)	Together with IR (next table entry), LA adapts the EGPRS transmission to meet changing radio link conditions.
EGPRS Incremental Redundancy (IR)	IR adjusts the physical layer code rate to actual channel conditions by incrementally transmitting redundant information until decoding is successful. Automatic Repeat Request (ARQ) protocol takes care of requesting and retransmitting incorrectly received blocks. ARQ enables both dynamic RLC window management (to avoid window stalling) and dynamic RLC polling frequency (to minimize retransmission delay and save radio bandwidth).
GPRS multislot class 10	Multislot class 10 and 12 allow for dynamic allocation of time slots.
EGPRS multislot class 12	
NC0	NC0 is the normal mode of control for a GPRS mobile in which the MS (Mobile Station) performs autonomous cell reselection.
DPC	Downlink Power Control Allows the network to adjust the downlink power of any dedicated channels on the BTS based on measurement reports sent by the mobile. This allows the network to reduce interference between multiple mobiles while still maintaining adequate signal quality for the individual mobiles.
One-phase packet access for GPRS	In establishing a TBF (Temporary Block Flow) connection, the MS (Mobile Station) requests either one-phase or two-phase packet access. In one-phase access, the network responds to a packet channel request by sending a packet uplink assignment message and reserving resources for uplink transfer of a number of radio blocks. In two-phase access, a packet resource request is sent on receipt of the packet uplink assignment.
One-phase packet access for EGPRS	
Two-phase packet access for GPRS	
Two-phase packet access for GPRS	
RLC-acknowledged operation mode	The RLC-acknowledged and LLC-acknowledged modes are used to ensure the integrity of received data where QoS requires it. RLC (Radio Link Control) acknowledgment is typically the default (depending on the network and user profile). LLC-acknowledgment is optional and ensures that all LLC (Logical Link Control) frames are received without error. Since LLC-acknowledged mode requires acknowledgement of all LLC frames, the mode has an impact on throughput.
RLC-unacknowledged operation mode	
LLC-acknowledged transmission mode	
LLC-unacknowledged transmission mode	
GSM network operation mode I and II	The Network Operating Mode specifies the coordination of paging for circuit-switched and packet-switched services. Mode I - The mobile can receive circuit-switched pages while in a packet-switched call. Mode II - The mobile cannot receive a circuit-switched page while in a packet-switched call, as it would force the mobile to constantly monitor its CCCH channel.

Item	Comments
(SL8080/80B/82/84) PBCCH / PCCCHI	<p>Packet Broadcast Control Channel</p> <p>PBCCH is a packet data signaling channel that can supplement the BCCH GSM control channel, allowing decoupling of voice and packet control channels to set up data calls. PBCCH broadcasts GPRS / EGPRS specific cell re-selection parameters for serving and neighbor cells used in cell selection / re-selection for packet services.</p>
GPRS test modes (ETSI test mode A and B)	<p>The European Telecommunications Standards Institute (ETSI) defines standards and requirements for testing of GSM mobile equipment.</p> <p>In test mode A, the mobile requests an uplink TBF and transmits random data on a designated number of timeslots. This causes a device to transmit data without using upper layer protocols. Once the transmission has started, the downlink TBF halts. The device remains in this mode until the testing equipment terminates it.</p> <p>In test mode B, the mobile is prompted to receive data on a number of specified downlink timeslots and re-transmit the same data back on the corresponding uplink timeslots. Test mode B allows tests to be performed on both the transmitter and receiver within a single session.</p>
NACC (R4 GERAN Feature Set 1)	<p>Network Assisted Cell Change</p> <p>Enables the network to provide additional information about neighbor cells to the mobile while in a packet data session, which decreases the experienced service delays caused by cell re-selection.</p>
MAIO	<p>Mobile Allocation Index Offset</p> <p>MAIO and Hopping Sequence Number (HSN) are used in conjunction with Frequency Hopping to determine the hopping sequence used in each frame. The MAIO supports as many values as there are frequencies in the hopping list, and these are used to indicate the offset within the hopping list that identifies the frequency used.</p>
Packet enhanced measurement report (PEMR)	<p>Packet Enhanced Measurement Report (PEMR) is one of the RLC / MAC (Radio Link Control and Medium Access Control) control messages that include a carrier identifier. This message is a requirement of supporting multicarrier TBF.</p>
Delayed TBF Release	<p>Delayed Temporary Block Flow Release (also called Extended Uplink TBF)</p> <p>Delayed TBF Release reduces latency between uplink data transfers and reduced signaling on the network by maintaining a connection for brief periods when the network is temporarily inactive and the mobile station has no radio link control information to send. For this feature to work properly, the mobile station must support delayed TBF release.</p>
Extended Dynamic Allocation	<p>Radio blocks can be transmitted on up to four different PDCHs. Permits full class 12 operation.</p>
Single Antenna Interference Cancellation (SAIC)	<p>SAIC mitigates code-channel interference from neighboring cells resulting in fewer dropped calls, and faster download rates for e-mail and websites.</p>
Circuit-switched data bearers ^a	<p>These circuit-switched data bearers are supported on 2G networks:</p> <ul style="list-style-type: none"> • Asynchronous 9,600 bps • Asynchronous 14,400 bps

Item	Comments
Security	
Encryption support	GPRS / EGPRS support GEA1, GEA2, and GEA3 data ciphering. GSM CSD and SMS use A5/1 and A5/3 encryption.
PAP for RADIUS authentication - GPRS / EGPRS	PAP (Password Authentication Protocol) is a method of authenticating usernames and passwords against a database on a RADIUS (Remote Authentication Dial-In User Service) server. In a standard login, the service provider prompts for a username and password. In PAP authentication, the username and password are entered in the client's dialing software and sent as one data package, rather than the server sending a login prompt and waiting for a response.
CHAP for RADIUS authentication - GPRS / EGPRS	CHAP (Challenge Handshake Authentication Protocol) is a more secure method for connecting to a system than PAP. After a link is established, the server sends a challenge message to the client. The client responds with a value calculated using a one-way hash function. The server compares its own calculation of the expected hash value to the client's response. If the values match, the authentication is acknowledged; otherwise the connection is terminated.
Support for encryption algorithm UEA1 (Kasumi)	UEA1 (UMTS Encryption Algorithm) generates the keystream as a function of a cipher key that is re-synchronized to every MAC / RLC frame. UEA is based on the Kasumi algorithm.
Support for integrity algorithm UIA1 (Kasumi)	UIA1 (UMTS Integrity Algorithm) is the algorithm used to compute the IK (Integrity Key) used in message authentication. UIA is based on the Kasumi algorithm.
UMTS	
WCDMA-to-GPRS reselection in CELL_FACH	CELL_FACH is an RRC (Radio Resource Control) service state in which cell reselection is performed. This feature prevents dropping of RRC connections.
Inter-frequency reselection in Cell_FACH	
Radio link failure	Radio link failure is a procedure that indicates an 'out-of-synch' state on one or more radio links. Node B of the RNC (Radio Network Controller) reports this event before attempting resynchronization. The radio link restoration procedure indicates restoration of the 'synchronized' state.
SIB scheduling	SIB (System Information Block) scheduling controls the broadcasting of information to user equipment in a cell. The user equipment retrieves the schedule, and is then able to change to sleep mode, receiving only those blocks that it needs.
SIB modification	
Re-establishment procedure	Following a radio link failure, the RNC maintains the RRC connection, waiting for re-establishment.
VT + PS call (subject to network availability)	Simultaneous VT (Video Terminal) and PS (Packet Switched) calls are supported.
Packet Cell Change Order from GSM→UTRAN	Call transfer between GSM-based and UTRAN-based cells is supported.
Background PLMN search	Improved algorithm for Higher Priority PLMN (HPPLMN) search while camped on a 3G cell.
Configurable Release 5 or Release 99 support	

Item	Comments
Circuit-switched data bearers	
Data bearers ^a	<p>These circuit-switched data bearers are supported on 3G networks:</p> <ul style="list-style-type: none"> • Synchronous transparent mode = 64000 bps • Synchronous transparent mode = 56000 bps • Asynchronous V110 UDI = 14400 bps • Asynchronous V110 UDI = 28800 bps • Asynchronous V110 UDI = 38400 bps • Asynchronous V120 = 14400 bps • Asynchronous V120 = 28800 bps • Asynchronous V120 = 56000 bps
HSDPA	
Data rates	<p>The following data rates are supported:</p> <ul style="list-style-type: none"> • Category 12 (1.8 Mbps) • Category 5/6 (3.6 Mbps)
HSDPA logical channels	<p>These HSDPA logical channels are supported:</p> <ul style="list-style-type: none"> • HS-SCCH • HS-DPCCH • HS-PDSCH—Up to ten HS-PDSCH channels are supported.
HSDPA transport channels	<p>HS-DSCH is supported at these rates:</p> <ul style="list-style-type: none"> • 120 kbps • 240 kbps • 360 kbps
Incremental redundancy	<p>IR adjusts the physical layer code rate to actual channel conditions by incrementally transmitting redundant information until decoding is successful. Automatic Repeat Request (ARQ) protocol takes care of requesting and retransmitting incorrectly received blocks. ARQ enables both dynamic RLC window management (to avoid window stalling) and dynamic RLC polling frequency (to minimize retransmission delay and save radio bandwidth).</p>
Chase combining retransmission scheme	<p>The Chase combining retransmission scheme is the simplest HARQ (Hybrid Automatic Request) link adaptation technique. HARQ techniques are used to enhance system performance.</p>
HSDPA Compressed Mode	<p>Allows the user equipment to interrupt transmission and reception during a call for brief periods in order to measure the signal strength of neighboring cells that use different frequencies.</p>
(SL8080/80B/82/84) Concurrent voice and HSDPA data	
HSDPA Indicator	<p>Allows user interface to display an indicator when HSDPA data transfer is in progress.</p>
Receiver equalizer support	
Miscellaneous	
Fast link adaptation	<p>The data rate is adapted to radio conditions.</p>
Vary the effective code rate	<p>The effective code rate is varied based on code space resources.</p>
HARQ, MAC-HS disassembly	<p>MAC-HS (High Speed MAC) is the base station MAC (Medium Access Control) protocol. MAC-HS enables fast radio resource allocation.</p>
MAC-HS reordering queue distribution and processing support	

Item	Comments
Cell change	These cell change methods are supported: <ul style="list-style-type: none"> • Synchronous and non-synchronous • Intra-Node B (softer repointing) • Inter-Node B (soft repointing)
Up-switching and downswitching of PS RAB between HS-PDSCH and DPCH	RAB (Radio Access Bearer) and channel mappings between the HS-PDSCH (High Speed Physical Downlink Shared Channel) and DPCH (Dedicated Physical Channel) are reallocated according to volume thresholds and inactivity timers.
Ciphering on the HS channel	Ciphering on high-speed channels protects radio-transmitted data against unauthorized third parties.
Support to not resume the HS channel if inter-RAT handover fails, but save the RB mapping information	RB (Radio Bearer) mapping information is preserved if a highspeed channel is dropped due to the failure of an inter-RAT (Radio Access Technology) transfer.
Support to not resume the HS channel if a radio link failure occurs, but save the RB mapping information	RB (Radio Bearer) mapping information is preserved if a highspeed channel is dropped due to a radio link failure.
WINS address support primary and secondary	Primary and secondary IP addresses can be assigned for WINS (Windows Internet Name Service) name servers.
(SL8080/80B/82/84) Voice support	Analog and PCM digital.
Unstructured supplementary services data (USSD)	USSD provides support for transmitting information over the GSM network signalling channels. It provides fast session-based communication between the user and an application, enabling use of text messaging, prepaid roaming, chat, etc.
(SL8080/80B/82/84) Supplementary services	Support for supplementary voice services such as Call Hold, Call Forward, Call Waiting, Multi-party Calls, Caller ID, Fixed Number Dialing, Service Dialing Numbers, etc.
Cell reselection/handover	Supports InterRat and InterFrequency cell-reselection and handover between supported frequency bands.
Security - IMEI Security	
SIM lock	The device can be 'MEP locked' to a particular PLMN.
SIM security	Both CHV1 and CHV2 are supported (unlock and unblock).

a. Not supported with the Open AT Application Framework.

7.2.1. UMTS (WCDMA) / GSM Specifications

The following table details the SL808X modem's support for common UMTS (WCDMA) and GSM specifications.

Table 78. UMTS (WCDMA) / GSM Specifications^a

Item	GSM	UMTS
Mobility management		
Automatic PLMN selection / reselection	✓	✓
Location updating procedure	✓	✓
IMSI attach procedure	✓	✓
IMSI detach procedure	✓	✓
Periodic location update	✓	✓

Item	GSM	UMTS
Authentication procedure	✓	✓
CM connection establishment from MS or network	✓	✓
CM connection release	✓	✓
Encryption key management	✓	✓
TMSI reallocation	✓	✓
Paging response	✓	✓
Abort procedure	✓	✓
Identification	✓	✓
CN system information	✓	✓
Call re-establishment	✓	✓
MM connection establishment emergency calls	✓	✓
Inter-RAT change procedure	✓	✓
CS follow-on procedure	✓	✓
Access class barring	✓	✓
Resumption procedure for Class B operation in GPRS	✓	✓
Handling of domain change CS to CS/PS and other combinations	✓	✓
MM information	✓	✓
Network mode of operation I, II	✓	✓
GPRS mobility management		
GPRS attach	✓	✓
GPRS detach	✓	✓
Routing area update	✓	✓
GPRS authentication	✓	✓
GPRS identification	✓	✓
GMM status	✓	✓
Periodic routing area update	✓	✓
Ciphering	✓	✓
Access class barring	✓	✓
GMM status	✓	✓
Combined GPRS attach	✓	✓
Combined GPRS detach	✓	✓
Combined routing location / area update	✓	✓
PS SMS	✓	✓
Network initiated combined GPRS detach	✓	✓
Network mode of operation change	✓	✓
RAB management		
QoS-based activation, network offers lower / higher QoS	✓	✓
Primary PDP context activation	✓	✓
PDP context deactivation	✓	✓
Data services		
AT commands	✓	✓
MS PS data calls	✓	✓
Single PDP context	✓	✓

Item	GSM	UMTS
PDP type PPP	x	x
PDP type IP	✓	✓
9.6 / 14.4 CS transparent data	✓ ^b	N/A
9.6 / 14.4 CS nontransparent data	✓ ^b	N/A
Fax	x	x
MT Sync CS data calls	✓ ^b	✓ ^b
MO Sync CS data calls	✓ ^b	✓ ^b
V.80	N/A	✓
V.42bis	x	N/A
Multiple PDP context profiles (up to 16)	✓	✓
SMS specifications		
CS domain MT SMS point-to-point	✓	✓
CS domain MO SMS point-to-point	✓	✓
SMMA	✓	✓
Dedicated mode	✓	✓
Message classes 0, 1, 2, 3, none	✓	✓
SMS / SMSP / SMSS access from SIM / USIM	✓	✓
Reply path	✓	✓
Validity period	✓	✓
PS domain MT SMS point-to-point	✓	✓
PS domain MO SMS point-to-point	✓	✓
SMS status reports	✓	✓
SMS commands	✓	✓

- a. ✓—Supported; x—Not supported; N/A—Not applicable
 b. Not supported by the Open AT Application Framework

8. Design Guidelines

This chapter provides general design guidelines for the AirPrime SL808X Embedded Module.

Caution: *This list is non-exhaustive, and the developer is responsible for deciding whether to implement these guidelines.*

For industrial assembly guidelines, refer to document [7] AirPrime SL Series Customer Process Guidelines, available from your Sierra Wireless account representative.

8.1. General Rules and Constraints

Clock and other high frequency digital signals (e.g. serial buses) should be routed as far as possible from the AirPrime SL808X Embedded Module analog signals.

If the application design makes it possible, all analog signals should be separated from digital signals by a ground line on the PCB.

Tip: *It is recommended to avoid routing any signals under the AirPrime SL808X Embedded Module on the application board.*

8.2. PCB Layout Recommendations

Ground slugs should be reflowed on to the host PCB with < 30% voiding to allow effective heat dissipation.

8.3. Power Supply

The power supply is one of the key issues in the design of a GSM terminal.

A weak power supply design could, in particular, affect:

- EMC performance
- The emission spectrum
- The phase error and frequency error

When designing the power supply, careful attention should be paid to the following:

- The quality of the power supply—low ripple, PFM or PSM systems should be avoided; linear regulation or PWM converters are preferred for low noise.
- The capacity to deliver high current peaks in a short time (pulsed radio emission).
- The VCC_3V6 line must support peak currents with an acceptable voltage drop which guarantees a minimal VCC_3V6 value of 3.3 V (lower limit of VCC_3V6)

8.4. Antenna

Another key issue in the design of a GSM terminal is the mechanical and electrical antenna adaptation. Sierra Wireless strongly recommends working with an antenna manufacturer either to develop an antenna adapted to the application or to adapt an existing solution to the application.

For more information on routing constraints for the RF circuit, see section 8.7.4 RF Circuit.

8.5. PCB Specifications for the Application Board

In order to save costs for simple applications, a cheap PCB structure can be used for the application board of the AirPrime SL808X Embedded Module. A 4-layer through-hole type PCB structure can be used.

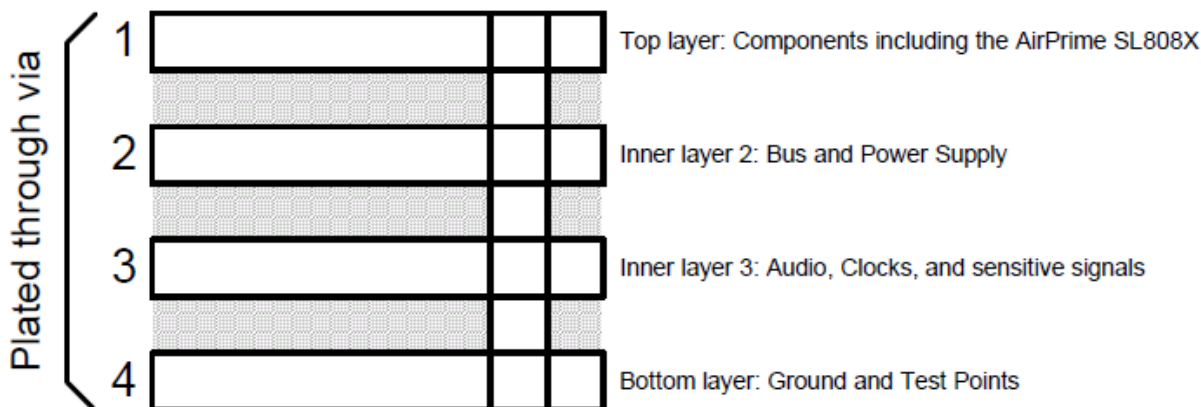


Figure 31. PCB Structure Example for the Application Board

Note: Due to the limited layers of 4-layer PCBs, sensitive signals like audio, SIM and clocks cannot be protected by 2 adjacent ground layers. As a result, care must be taken during PCB layout for these sensitive signals by avoiding coupling to noisy baseband through adjacent layers.

8.6. Recommended PCB Landing Pattern

Refer to document [7] AirPrime SL Series Customer Process Guidelines.

8.7. Routing Constraints

8.7.1. Power Supply

Since the maximum peak current can reach 2 A, Sierra Wireless strongly recommends having a large width for the layout of the power supply signal (to avoid voltage loss between the external power supply and the AirPrime SL808X Embedded Module supply).

Pins 42 and 44 of the AirPrime SL808X Embedded Module should be gathered in the same piece of copper, as shown in the figure below.

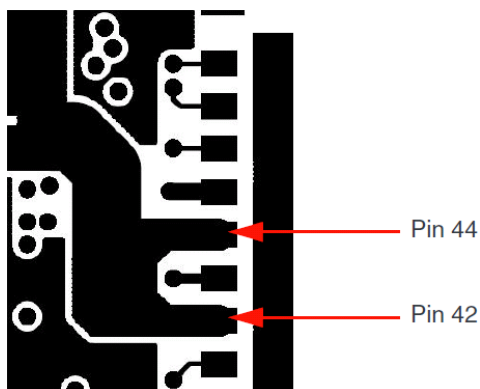


Figure 32. Power Supply Routing Example

Filtering capacitors near the AirPrime SL808X Embedded Module power supply are also recommended (22 μ F to 100 μ F).

Attention should be paid to the ground track or the ground plane on the application board for the power supply which supplies the AirPrime SL808X Embedded Module. The ground track or the ground plane on the application board must support current peaks as well as with the VCC_3V6 track.

If the ground track between the AirPrime SL808X Embedded Module and the power supply is a copper plane, it must not be parceled out.

The routing must be done in such a way that the total line impedance could be 10 m Ω @ 217Hz. This impedance must include the bias impedances.

The same care should be taken when routing the ground supply.

If these design rules are not followed, phase error (peak) and power loss could occur.

8.7.1.1. Ground Plane and Shielding Connection

The AirPrime SL808X Embedded Module has LGA ground pads linked to the ground. The ground has to be connected to the application board through a complete layer on the PCB.

A ground plane must be available on the application board to provide efficient connection to the bottom ground of the AirPrime SL808X Embedded Module. The bottom side shielding of the AirPrime SL808X Embedded Module is achieved by soldering the ground plane of the application board and the AirPrime SL808X Embedded Module.

The best shielding performance is achieved when the application ground plane is a complete layer of the application PCB. To ensure good shielding of the AirPrime SL808X Embedded Module, a complete ground plane layer on the application board must be available, with no tradeoffs. Connections between other ground planes should be done with vias.

Without this ground plane, external spurious TX or RX blockings could appear.

For more information, see section 8.6 Recommended PCB Landing Pattern.

8.7.2. SIM Interface

The length of the tracks between the AirPrime SL808X Embedded Module and the SIM socket should be as short as possible. Maximum recommended length is 10cm.

ESD protection is mandatory on the SIM lines if access from outside of the SIM socket is possible.

8.7.3. Audio Circuit

To get better acoustic performances, the basic recommendations are as follows:

- The speaker lines (SPK) must be routed in parallel without any wires in between
- The microphone lines (MIC) must be routed in parallel without any wires in between

All the filtering components (RLC) must be placed as close as possible to the associated MIC and SPK pins.

8.7.4. RF Circuit

The RF signal must be routed on the application board using tracks with a 50 Ω characteristic impedance.

Basically, the characteristic impedance depends on the dielectric, the track width and the ground plane spacing.

In order to respect this constraint, Sierra Wireless recommends using MicroStrip or StripLine structure and computing the Tracks width with a simulation tool (like AppCad shown in the figure below, available free of charge at <http://www.agilent.com>).

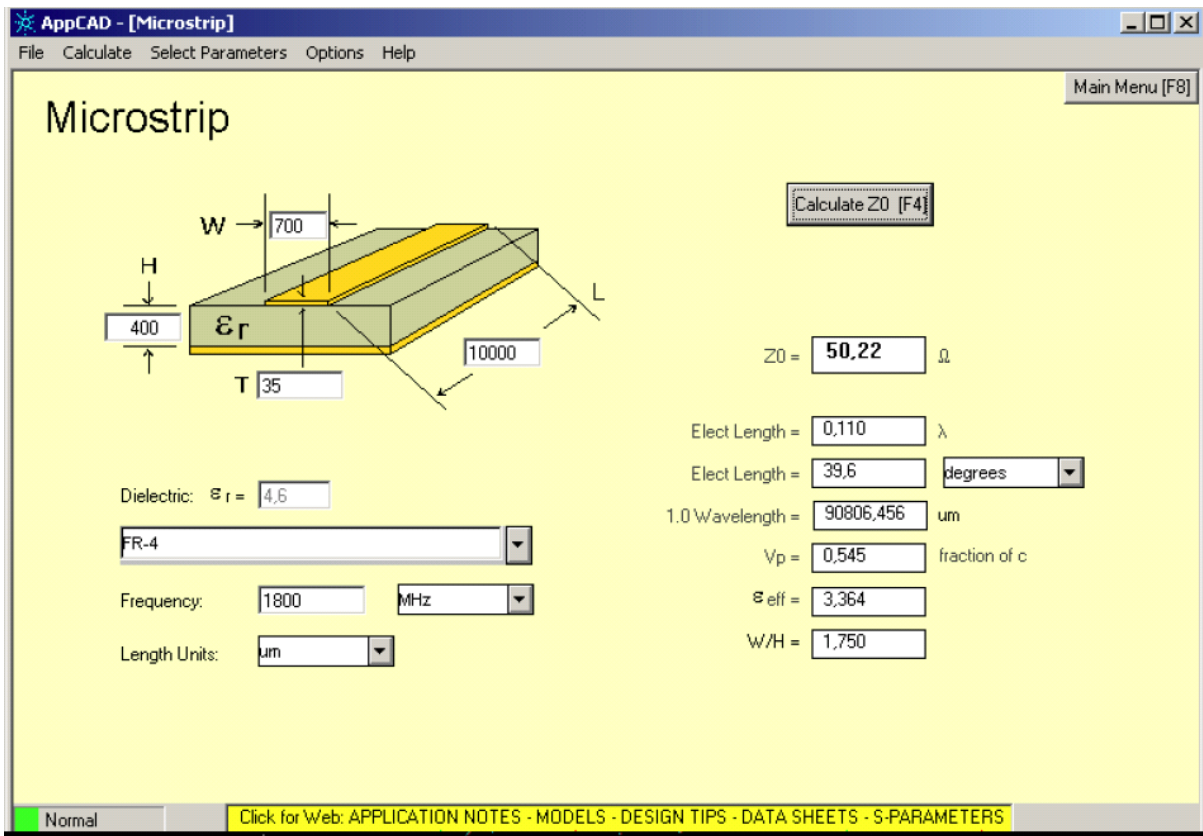


Figure 33. AppCad Screenshot for MicroStrip Design

If a multi-layered PCB is used, the RF path on the board must not cross any signal (digital, analog or supply).

If necessary, use StripLine structure and route the digital line(s) "outside" the RF structure as shown in the figure below.

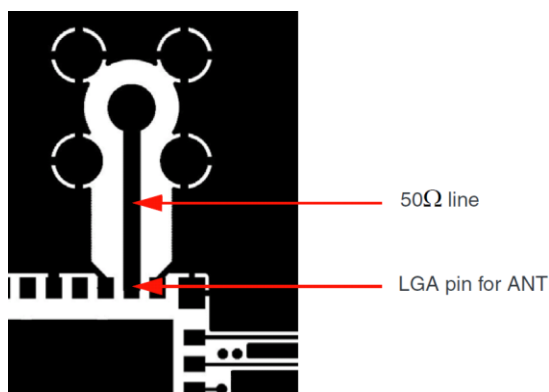


Figure 34. RF Routing Examples

Stripline and Coplanar design requires having a correct ground plane at both sides. Consequently, it is necessary to add some vias along the RF path.

It is recommended to use Stripline design if the RF path is fairly long (more than 3cm), since MicroStrip design is not shielded. Consequently, the RF signal (when transmitting) may interfere with neighboring electronics (AF amplifier, etc.). In the same way, the neighboring electronics (micro-controllers, etc.) may degrade the reception performances.

The GSM/GPRS connector is intended to be directly connected to a 50 Ω antenna and no matching is needed.

8.8. EMC and ESD Recommendations

EMC tests have to be performed on the application as soon as possible to detect any potential problems.

When designing, special attention should be paid to:

- Possible spurious emissions radiated by the application to the RF receiver in the receiver band
- ESD protection is mandatory on all signals which are externally accessible · Typically, ESD protection is mandatory for the:
 - SIM (if accessible from outside)
 - Serial interface
 - USB
 - Antenna Port

The ESD diode on the antenna port is intended to prevent any degradation in RF performance. The following device is recommended for SL808X-series modules:

Manufacturer: INPAQ Technology Co.

Part Number: EGA10402V05A2

- Length of the SIM interface lines (preferably <10 cm)
- EMC protection on audio input/output (filters against 900 MHz emissions)
- Biasing of the microphone inputs
- Ground plane: Sierra Wireless recommends a common ground plane for analog/digital/RF grounds
- A metallic case or plastic casing with conductive paint are recommended, except area around the antenna

Note: The AirPrime SL808X Embedded Module does not include any protection against over voltage.

The host device must provide adequate ESD protection on digital circuits and antenna ports as detailed in Table 79 ESD Specifications. See document [5] Sierra Wireless Reliability Specification for additional details.

Note: The level of protection required depends on your application.

Table 79. ESD Specifications

Category	Connection	Specification
Operational	RF ports	<ul style="list-style-type: none"> • IEC-61000-4-2—Level (Electrostatic Discharge Immunity Test)

Category	Connection	Specification
Non-operational	Host connector interface	Unless otherwise specified: <ul style="list-style-type: none"> • JESD22-A114 +/- 2kV Human Body Model • JESD22-A115 +/- 200V Machine Model • JESD22-C101C +/- 500V Charged Device Model
Signals	USIM connector	ESD protection is highly recommended at the point where the USIM contacts are exposed, and for any other signals that would be subjected to ESD by the user.
	Other host signals	

8.9. Mechanical Integration

Attention should be paid to:

- Antenna cable integration (bending, length, position, etc)
- Leads of the AirPrime SL808X Embedded Module to be soldered to the ground plane

8.10. Operating System Upgrade

The AirPrime SL808X Embedded Module Operating System is stored in flash memory and can be easily upgraded.

Note: In order to follow regular changes in the GPRS standard and to offer a state-of-the-art operating system, Sierra Wireless recommends that the application designed around an embedded module (or embedded module based product) should allow easy operating system upgrades on the embedded module via the recommended firmware download protocol (see document [6] AirCard/AirPrime USB Driver Developer's Guide). Therefore, the application shall either allow a direct access to the embedded module serial interface through an external connector or implement any mechanism allowing the embedded module operating system to be downloaded.



9. Embedded Testability

9.1. Testing Assistance Provided by Sierra Wireless

Extended AT commands have been implemented to assist with performing FTA GCF tests and portions of CE Mark tests requiring radio module access. These are documented in documents [2] AirCard/AirPrime UMTS Devices Supported AT Command Reference and [3] AirPrime MC8xxx Embedded Modules Extended AT Command Reference.

Sierra Wireless offers optional professional services based assistance to OEMs with regulatory approvals.

9.2. Integration Requirements

When integrating the SL808X module, the following items must be addressed:

- Mounting—Effect on temperature, shock, and vibration performance
- Power supply—Impact on battery drain and possible RF interference
- Antenna location and type—Impact on RF performance
- Regulatory approvals—As discussed in section 10 Certification Compliance and Recommended Standards.
- Service provisioning—Manufacturing process

Sierra Wireless provides guidelines for successful SL808X module integration with the document suite and offers integration support services as necessary.

9.3. IOT / Operator

Interoperability and Operator/Carrier testing of the finished system is the responsibility of the OEM. The test process will be determined with the chosen network operator(s) and will be dependent upon your business relationship with them, as well as the product's application and sales channel strategy.

Sierra Wireless offers assistance to OEMs with the testing process, if required.

9.4. Module Testing Recommendations

When testing your integration design:

- Test to your worst case operating environment conditions (temperature and voltage)
- Test using worst case operation (transmitter on 100% duty cycle, maximum power)
- Monitor temperature at the location shown below—this should be the hottest spot on the device (the WCDMA PA).

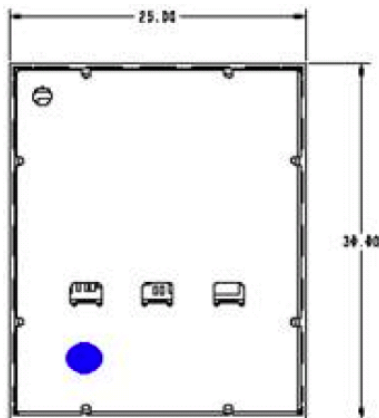


Figure 35. Recommended Thermocouple Location

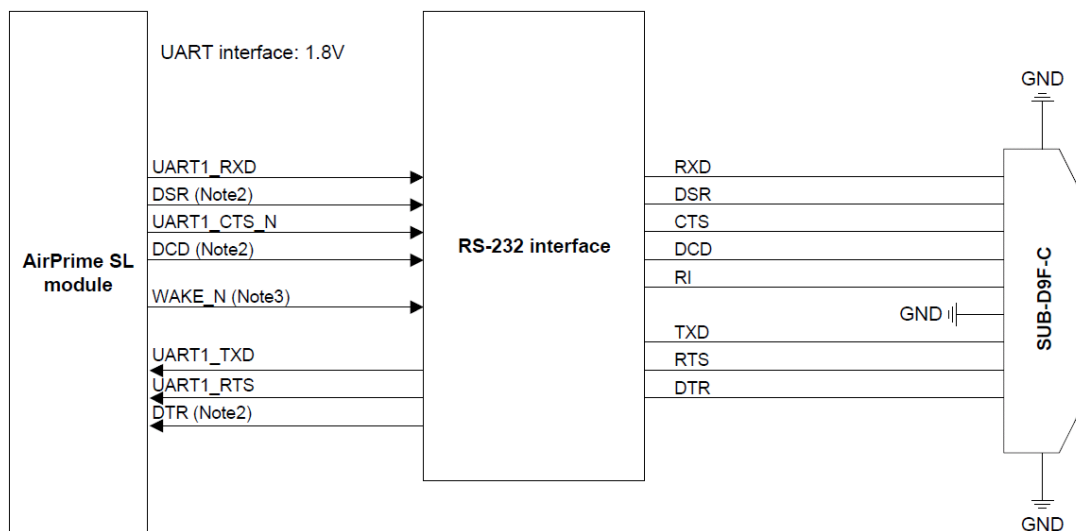
Note: Make sure that your system design provides sufficient cooling for the module. The RF shield temperature should be kept below 90°C when integrated to prevent damage to the module's components.

9.5. Serial Interface Access

Direct access to the UART1 serial interface is useful for:

- Testability operations
- Firmware download (for more information on firmware upgrade, see section 3.9 Firmware Upgrade)

To allow that access, the following serial interface access design is recommended:



Note 1: 1.8V supply will be required for the RS-232 interface

Note 2: DCD carried over reconfigured GPIO_1, PCM_DIN, or SPI_CS_N.
DSR carried over reconfigured GPIO_3, PCM_CLK, or SPI_DATA_MOSI.
DTR carried over reconfigured GPIO_2, PCM_DOUT, or SPI_CLK.

Note 3: RI functionality (alert host about incoming call) is provided, if needed, by using WAKE_N.

Figure 36. Main Serial Interface (UART1)

You must provide either:

- A split-supply RS-232 transceiver. For example, Linear Technology LTC2804 or Texas Instruments TRS3253E.
- or
- A single-supply transceiver plus a level translator. For example, Analog Devices ADM3307E for the RS232 transceiver, and ST Microelectronics ST2378E for the level translator.

When it is necessary to download firmware into the AirPrime SL808X Embedded Module without going through the RS232 interface, access to the embedded module is forced via the debug connector.

9.6. RF Output Accessibility

During the integration phase of the AirPrime SL808X Embedded Module, it can be helpful to connect the AirPrime SL808X Embedded Module to a GSM/GPRS simulator in order to check critical RF TX parameters and power behavior.

Although the AirPrime SL808X Embedded Module has been certified, some parameters may have degraded due to some basic precautions not having been followed (poor power supply, for example). This will not affect the functionality of the product, but the product will not comply with GSM specifications.

The following TX parameters can be checked using a GSM/GSM simulator:

- Phase & Frequency Error
- Output Power and GSM Burst Time
- Output Spectrum (Modulation and Switching)

Listed below are available typical GSM/GPRS simulators:

- CMU200 from Rhode & Schwarz
- 8960 from Agilent

Because of the high prices associated with GSM/GPRS simulators and the necessary GSM know-how to perform simulations, customers can check their applications in the Sierra Wireless laboratories. Contact the Sierra Wireless support team for more information.



10. Certification Compliance and Recommended Standards

10.1. UMTS Compliance Acceptance and Certification

The SL808X is designed to be compliant with the 3GPP Release 5 UMTS Specification for Mobile Terminated Equipment. Final regulatory and operator certification requires regulatory agency testing and approval with the fully integrated UMTS UE host device incorporating the SL808X module.

The OEM host device and, in particular, the OEM antenna design and implementation will affect the final product functionality, RF performance, and certification test results.

Note: Tests that require features not supported by the SL808X (as defined by this document) are not supported.

10.2. Certification Compliance

The AirPrime SL808X Embedded Module installed on a development kit socket board application is compliant with the requirements in the following table.

Table 80. Standards Conformity for the SL808X Embedded Module

Domain	Applicable Standard	SL8080	SL8080B	SL8081	SL8082	SL8083	SL8084	SL8085
Efficient use of the radio frequency spectrum	EN 301 511 (V 9.0.2)				✓	✓		
EMC	EN 301 489-1 (v1.8.1) EN 301 489-7 (v1.3.1)				✓	✓		
FCC	FCC Part 22, 24	✓	✓	✓				
IC	RSS-132 Issue 2 RSS-133 Issue 5							
EU	GCF-CC compliance CE Mark regulatory certification of compliance				✓	✓		
A-Tick certification							✓	✓
North/Latin America operators/carriers	PTCRB approval per NAPRD requirement AT&T	✓	✓	✓				

10.3. Applicable Standards

For queries concerning specific industry standards and certifications not described in this chapter, contact your Sierra Wireless account representative.

10.3.1. Important Notice

Because of the nature of wireless communications, transmission and reception of data can never be guaranteed. Data may be delayed, corrupted (i.e., have errors) or be totally lost. Although significant delays or losses of data are rare when wireless devices such as the Sierra Wireless modem are used in a normal manner with a well-constructed network, the Sierra Wireless modem should not be used in situations where failure to transmit or receive data could result in damage of any kind to the user or any other party, including but not limited to personal injury, death, or loss of property. Sierra Wireless and its affiliates accept no responsibility for damages of any kind resulting from delays or errors in data transmitted or received using the Sierra Wireless modem, or for failure of the Sierra Wireless modem to transmit or receive such data.

10.3.2. Safety and Hazards

Do not operate your AirPrime SL808X Embedded Module modem:

- In areas where blasting is in progress
- Where explosive atmospheres may be present including refuelling points, fuel depots, and chemical plants
- Near medical equipment, life support equipment, or any equipment which may be susceptible to any form of radio interference. In such areas, the SL808X modem **MUST BE POWERED OFF**. Otherwise, the SL808X modem can transmit signals that could interfere with this equipment.

In an aircraft, the SL808X modem **MUST BE POWERED OFF**. Otherwise, the SL808X modem can transmit signals that could interfere with various onboard systems and may be dangerous to the operation of the aircraft or disrupt the cellular network. Use of a cellular phone in an aircraft is illegal in some jurisdictions. Failure to observe this instruction may lead to suspension or denial of cellular telephone services to the offender, or legal action or both.

Some airlines may permit the use of cellular phones while the aircraft is on the ground and the door is open. The SL808X modem may be used normally at this time.

10.3.3. Important Compliance Information for North American Users

The AirPrime SL8080/SL8080B/SL8081 Embedded Wireless Modules have been granted FCC (Federal Communications Commission) modular approval for use in mobile applications. Module integrators may use these devices in their final products without attaining additional FCC/IC (Industry Canada) certifications, provided they meet specific design conditions in their platform. Otherwise, additional FCC/IC approvals must be obtained.

Please contact your Sierra Wireless representative for more information.

10.3.4. EU Regulatory Conformity

Sierra Wireless hereby declares that the SL8083 modem conforms with all essential requirements of Directive 1999/5/EC.



The Declaration of Conformity made under Directive 1999/5/EC is available for viewing at the following location in the EU community:

Sierra Wireless (UK) Limited
Suite 5, the Hub
Fowler Avenue
Farnborough Business Park
Farnborough, United Kingdom GU14 7JP



11. Customization

Subject to commercial terms, Sierra Wireless can supply custom-configured modems to facilitate a carrier's network and performance requirements. Sierra Wireless also offers a standard configuration for each country.

Custom configurations are entered into a selector spreadsheet that Sierra supplies. A unique part number is assigned to each custom configuration to facilitate customer ordering.

Table 81. Customizable Features

Name	Description	Default
(SL8080/80B/82/84) Voice functionality	When enabled, supports voice calls and displays the Watcher 'voice' tab.	Enabled
MEP network locked	Mobile Equipment Personalization network locked to only allow use with specific preconfigured PLMNs (SIMs). MMI supports the entry of an unlock code subject to permanent locking feature below.	Off
MEP service provider locked		
Permanent MEP locked	Can block deactivation of MEP locked feature	Off
Roaming indicator disable ^a	Watcher never shows the onscreen roaming indicator.	Indicator enabled
Service indicator disable ^a	Watcher never shows the onscreen indicator. (For example, "HSDPA", "GPRS", "3G")	Indicator enabled
Data counter disable ^a	Watcher never shows Rx and Tx data counters.	Rx and Tx data counters enabled
Disable advanced profile menu (QoS) ^a	If disabled Watcher never shows advanced profile's QoS menus and user cannot change the minimum and requested QoS parameters.	Advance profile menu disabled
SIM PUK prompt enable	If enabled, Watcher shows the message "SIM blocked please enter PIN code".	Disabled, Watcher displays "Contact Service Provider" when SIM PIN is blocked.
GPRS attach on start-up ^a	If disabled, modem attaches when GPRS connection is required.	The modem GPRS attaches at start-up.
Disable Auto Connect	If disabled, the Auto Connect feature is blocked and cannot be enabled by the user. If blocked, the "Auto Connect" button on the profile edit menu is greyed out and cannot be selected.	The auto-connect feature menu item is enabled with the default state set to manual (not auto-connect).
Scan for profile	The modem scans through all its programmed profiles to find successful GPRS connection.	Not scanning. Only the selected profile is used for connection.
IMEI/TAC	Configured at factory to one of the following values: <ul style="list-style-type: none"> Sierra Wireless IMEI Customer-specified IMEI No IMEI 	Sierra Wireless IMEI

a. Features only available if supported in the user interface.



12. Safety Recommendations

(For Information Only)

For the efficient and safe operation of your GSM application based on the AirPrime SL808X Embedded Module, please read the following information carefully.

12.1. RF Safety

12.1.1. General

Your GSM terminal is based on the GSM standard for cellular technology. The GSM standard is spread all over the world. It covers Europe, Asia and some parts of America and Africa. This is the most used telecommunication standard.

Your GSM terminal is actually a low power radio transmitter and receiver. It sends out as well as receives radio frequency energy. When you use your GSM application, the cellular system which handles your calls controls both the radio frequency and the power level of your cellular modem.

12.1.2. Exposure to RF Energy

There has been some public concern about possible health effects of using GSM terminals. Although research on health effects from RF energy has focused on the current RF technology for many years, scientists have begun research regarding newer radio technologies, such as GSM. After existing research had been reviewed, and after compliance to all applicable safety standards had been tested, it has been concluded that the product was fitted for use.

If you are concerned about exposure to RF energy, there are things you can do to minimize exposure. Obviously, limiting the duration of your calls will reduce your exposure to RF energy. In addition, you can reduce RF exposure by operating your cellular terminal efficiently by following the guidelines below.

12.1.3. Efficient Terminal Operation

For your GSM terminal to operate at the lowest power level, consistent with satisfactory call quality:

If your terminal has an extendable antenna, extend it fully. Some models allow you to place a call with the antenna retracted. However your GSM terminal operates more efficiently with the antenna when it is fully extended.

Do not hold the antenna when the terminal is "IN USE". Holding the antenna affects call quality and may cause the modem to operate at a higher power level than needed.

12.1.4. Antenna Care and Replacement

Do not use the GSM terminal with a damaged antenna. If a damaged antenna comes into contact with the skin, a minor burn may result. Replace a damaged antenna immediately. You may repair antenna to yourself by following the instructions provided to you. If so, use only a manufacturer-approved antenna. Otherwise, have your antenna repaired by a qualified technician.

Buy or replace the antenna only from the approved suppliers list. Using unauthorized antennas, modifications or attachments could damage the terminal and may contravene local RF emission regulations or invalidate type approval.

12.2. General Safety

12.2.1. Driving

Check the laws and the regulations regarding the use of cellular devices in the area where you have to drive as you always have to comply with them. When using your GSM terminal while driving, please:

- give full attention to driving,
- pull off the road and park before making or answering a call if driving conditions so require.

12.2.2. Electronic Devices

Most electronic equipment, for example in hospitals and motor vehicles is shielded from RF energy. However, RF energy may affect some improperly shielded electronic equipment.

12.2.3. Vehicle Electronic Equipment

Check with your vehicle manufacturer representative to determine if any on-board electronic equipment is adequately shielded from RF energy.

12.2.4. Medical Electronic Equipment

Consult the manufacturer of any personal medical devices (such as pacemakers, hearing aids, etc...) to determine if they are adequately shielded from external RF energy.

Turn your terminal OFF in health care facilities when any regulations posted in the area instruct you to do so. Hospitals or health care facilities may be using RF monitoring equipment.

12.2.5. Aircraft

Turn your terminal OFF before boarding any aircraft.

- Use it on the ground only with crew permission.
- Do not use it in the air.

To prevent possible interference with aircraft systems, Federal Aviation Administration (FAA) regulations require you should have prior permission from a crew member to use your terminal while the aircraft is on the ground. To prevent interference with cellular systems, local RF regulations prohibit using your modem while airborne.

12.2.6. Children

Do not allow children to play with your GSM terminal. It is not a toy. Children could hurt themselves or others (by poking themselves or others in the eye with the antenna, for example). Children could damage the modem, or make calls that increase your modem bills.

12.2.7. Blasting Areas

To avoid interfering with blasting operations, turn your unit OFF when you are in a "blasting area" or in areas posted: "turn off two-way radio". Construction crew often uses remote control RF devices to set off explosives.

12.2.8. Potentially Explosive Atmospheres

Turn your terminal OFF when in any area with a potentially explosive atmosphere. Though it is rare, but your modem or its accessories could generate sparks. Sparks in such areas could cause an explosion or fire resulting in bodily injuries or even death.

Areas with a potentially explosive atmosphere are often, but not always, clearly marked. They include fuelling areas such as petrol stations; below decks on boats; fuel or chemical transfer or storage facilities; and areas where the air contains chemicals or particles, such as grain, dust, or metal powders.

Do not transport or store flammable gas, liquid, or explosives, in the compartment of your vehicle which contains your terminal or accessories.

Before using your terminal in a vehicle powered by liquefied petroleum gas (such as propane or butane) ensure that the vehicle complies with the relevant fire and safety regulations of the country in which the vehicle is used.



13. Connector and Peripheral Device References

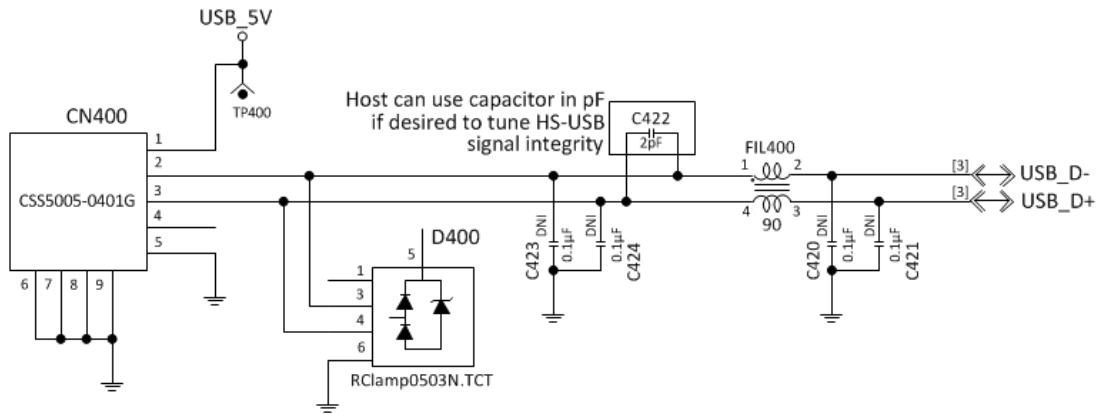
13.1. JTAG Connector

Sierra Wireless suggests that a MOLEX ZIF connector (MFG#: 0513741072) be applied to your design to enable debugging/testing of devices by Sierra Wireless in the event of platform issues (see <http://www.molex.com>).

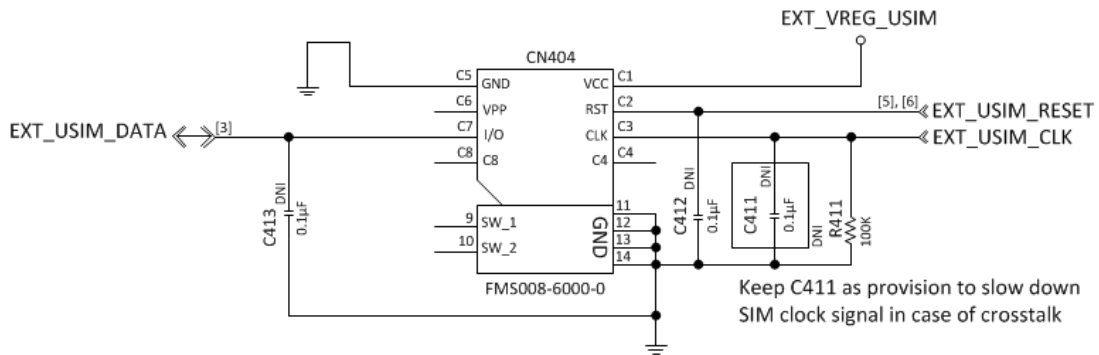


14. Signal Reference Schematics

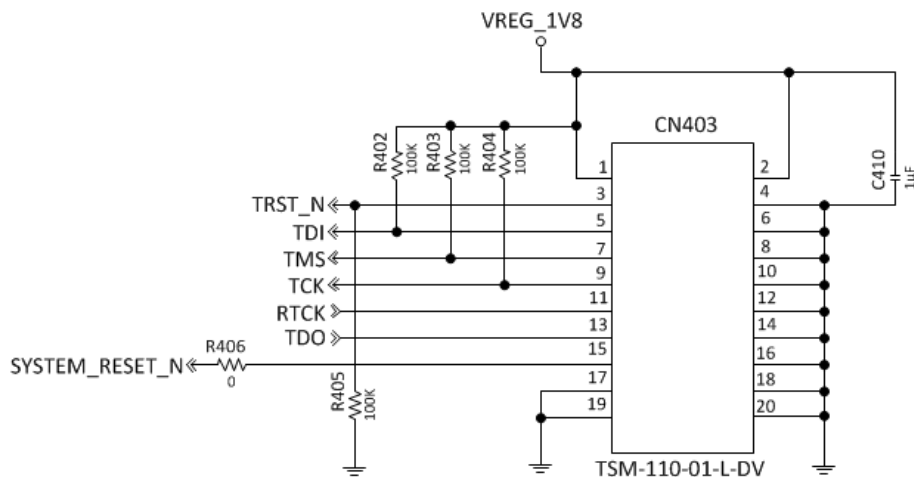
USB Interface



SIM Interface



JTAG Interface



A smaller JTAG connector is recommended in the PTS

>> 15. References

15.1. Web Site Support

For additional documents describing embedded module design, usage, and integration issues, visit <http://developer.sierrawireless.com/>.

Content	Web Site
General information about AirPrime SL Series Intelligent Embedded Module	http://www.sierrawireless.com/en/productsandservi&^•003Ú:ã ^Đ Embedded_Modules/SL_Series.as] ç
Open AT Application Framework Introduction	http://www.sierrawireless.com/en/productsandservi&^•003Ú:ã ^Đ Application_Framework.aspx
Developer support for software and hardware	http://forum.sierrawireless.com/

15.2. Reference Documents

15.2.1. Sierra Wireless Documents

The following Sierra Wireless documents are provided in your documentation package, or are available from www.sierrawireless.com:

- [1] Universal SL Development Kit User Guide
Document WA_DEV_LG_UGD_003
- [2] AirCard/AirPrime UMTS Devices Supported AT Command Reference
Document 2130617
- [3] AirPrime MC8xxx Embedded Modules Extended AT Command Reference
Document 2130616
- [4] AirPrime UMTS MiniCard CnS Reference
Document 2130602
- [5] Sierra Wireless Reliability Specification
Document 4110485
- [6] AirCard/AirPrime USB Driver Developer's Guide
Document 2130634
- [7] AirPrime SL Series Customer Process Guidelines
Document WM_DEV_LG_PTS_001

15.2.2. Industry / Other Documents

The following non-Sierra Wireless references are not included in your documentation package:

- [8] Universal Serial Bus Specification, Rev 2.0
- [9] 3GPP TS 34.108

15.3. Abbreviations / Acronyms

Table 82. List of Abbreviations / Acronyms

Abbreviation	Definition
3GPP	3rd Generation Partnership Project
A-GPS	Assisted GPS
API	Application Programming Interface
AT	ATtention (prefix for modem commands)
CHAP	Challenge Handshake Authentication Protocol
CnS	Contol and Status (Sierra Wireless' proprietary host interface protocol)
CPHS	Common PCN Handset Specification
CS	Circuit-switched
CSD	Circuit-switched Data
DHCP	Dynamic Host Configuration Protocol
DUN	Dial-Up Networking
EAP-SIM	Extensible Authentication Protocol Method for GSM Subscriber Identity
EDGE	Enhanced Data rates for GSM Evolution
EFR	Enhanced Full Rate
EONS	Enhanced Operator Name String
eSIM	embedded SIM
FR	Full Rate
GPRS	General Packet Radio Service
GPS	Global Positioning System
GSM	Global System for Mobile Communications
HPLMN	Home PLMN
HR	Half Rate
HSDPA	High Speed Downlink Packet Access
IMSI	International Mobile Subscriber Identity
LGA	Land Grid Array
MO	Modem Originated
MT	Modem Terminated
NDIS	Network Driver Interface Specification
NIC	Network Interface Card
NMEA	National Marine Electronics Association
PAP	Password Authentication Protocol
PC/SC	PC / Smart Card
PDP	Packet Data Protocol
PLMN	Public Land Mobile Network
PS	Packet-switched
QoS	Quality of Service
RF	Radio Frequency
RTC	Real Time Clock

Abbreviation	Definition
Rx	Receive
SDK	Software Development Kit
SIM	Subscriber Identity Module
SMS	Short Message Service
TDD	Telecommunications Device for the Deaf
TTY	Teletypewriter
Tx	Transmit
UMTS	Universal Mobile Telecommunications System
USB	Universal Serial Bus
USIM	Universal Subscriber Identity Module (UMTS)
USSD	Unstructured Supplementary Services Data
VCC	Collector Common Voltage
WCDMA	Wideband Code Division Multiple Access



SIERRA
WIRELESS