

Author: Sierra Wireless		Date: February 11, 2010											
APN Content Level	BASIC	INTERMEDIATE	✓ ADVANCED	Confidentiality	Public	✓ Private							
Software Compatibility*	FW: 7.x	Software Suite:	2.X	Plug-Ins:	TCP/IP	N/A	Security	N/A	Compiler Used:	N/A	Reference Hardware	No	
					Internet	N/A	LUA	N/A			Reference Software	No	
					C-GPS	N/A			RTE :	N/A			
* refer to software compatibility matrix section for more detail													
Hardware Compatibility	AirPrime Q Series :	Q2686	✓	Q2687	✓	Q26Extreme	✓	Q26Elite					
	AirPrime WMP Series :	WMP50	✓	WMP100	✓	WMP120	✓	WMP150	✓				
	AirPrime WS Series :	WISMO218		WISMO228									
	AirPrime AR Series	AR3550		AR5550		AR8550							
	AirLink FXT Series :	Fastrack Xtend GPRS	✓	Fastrack Xtend EDGE	✓	Fastrack Xtend HSPA	✓	Fastrack Xtend CDMA	✓				
	Legacy products (GSM):	Q24Classic		Q24Plus		Q24Extended		Q24Auto					
		Fastrack Supreme		Q64	✓	Q52 Omni							
Legacy products (CDMA):	Q2438F		Q2438R										

1 Version

Application Notes may be updated over their lifetime. To ensure you design with the correct version, please check the application notes page in www.sierrawireless.com for latest versions.

2 Introduction

The purpose of this application note is to present the recovery mechanism introduced in the Software Suite. The goal is to avoid infinite and uncontrolled reset loops in the firmware. For example, a typical case of the firmware instability is that when a new application is installed, and when this application is not compatible with the firmware, an infinite loop can be triggered.

3 Reset Loop Detection

For the firmware, a start-up KO is an unwanted reset before the end of the last event among these 2 events :

- 30s after a reset (value of the Software Suite)
- 10s after the initialisation of the AT command parser, in order to ensure that an AT command can be sent in all cases.

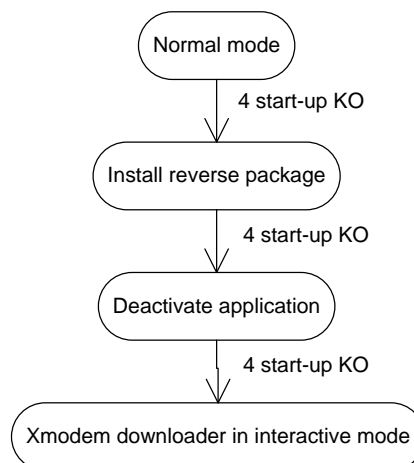
Customer reset (AT+CFUN=1...) and hardware resets are considered as wanted resets.

A reset loop is detected if there are 4 start-up KO in a row.

4 Recovery Mechanism

This mechanism starts when a reset loop is detected (4 start-ups KO in a row). There are 3 main steps :

1. Try to apply a reverse package.
2. Deactivate the Open AT® application.
3. Start the xmodem downloader in interactive mode.



4.1 Reverse package

The first action is to try to go back to the old firmware or application. Indeed, after an upgrade, if a reverse package was present in the download package (in DOTA or IDS volume), a flag is set to indicate that a recovery is possible. If the software is unstable, and if this flag is set, the bootloader will install the reverse patch.

This functionality is related to DOTA3 and IDS. Consult the IDS or DOTA documentation to know how to retrieve the fact that a reverse package was installed.

The flag is unset when the firmware considers that the upgrade was successful. In Open AT® Software Suite, it is done 5 minutes after a reset.

4.2 Application deactivation

If the reverse package was not present, the firmware waits for another reset loop detection. Then the application is deactivated. If it was the cause of the resets, the firmware becomes stable and it is now possible to :

- Call the xmodem downloader
- Install a new application or firmware by IDS.

4.3 Xmodem downloader in interactive mode

If the firmware continues resetting, the xmodem downloader takes the focus, and send a "+WDWL" unsolicited AT response to warn the user. It is now possible to download a new firmware or a new application by sending the "AT+WDWL" command.

5 Support

For direct clients: contact your Sierra Wireless FAE

For distributor clients: contact your distributor FAE

For distributors: contact your Sierra Wireless FAE

6 Document History

Level	Date	History
001	November 7, 2008	Initial document
002	February 11, 2010	Sierra Wireless format update

7 Legal Notice

Important Notice

Due to the nature of wireless communications, transmission and reception of data can never be guaranteed. Data may be delayed, corrupted (i.e., have errors) or be totally lost. Although significant delays or losses of data are rare when wireless devices such as the Sierra Wireless modem are used in a normal manner with a well-constructed network, the Sierra Wireless modem should not be used in situations where failure to transmit or receive data could result in damage of any kind to the user or any other party, including but not limited to personal injury, death, or loss of property. Sierra Wireless accepts no responsibility for damages of any kind resulting from delays or errors in data transmitted or received using the Sierra Wireless modem, or for failure of the Sierra Wireless modem to transmit or receive such data.

Safety and Hazards

Do not operate the Sierra Wireless modem in areas where blasting is in progress, where explosive atmospheres may be present, near medical equipment, near life support equipment, or any equipment which may be susceptible to any form of radio interference. In such areas, the Sierra Wireless modem **MUST BE POWERED OFF**. The Sierra Wireless modem can transmit signals that could interfere with this equipment. Do not operate the Sierra Wireless modem in any aircraft, whether the aircraft is on the ground or in flight. In aircraft, the Sierra Wireless modem **MUST BE POWERED OFF**. When operating, the Sierra Wireless modem can transmit signals that could interfere with various onboard systems.

Note: Some airlines may permit the use of cellular phones while the aircraft is on the ground and the door is open. Sierra Wireless modems may be used at this time.

The driver or operator of any vehicle should not operate the Sierra Wireless modem while in control of a vehicle. Doing so will detract from the driver or operator's control and operation of that vehicle. In some states and provinces, operating such communications devices while in control of a vehicle is an offence.

Limitations of Liability

This manual is provided "as is". Sierra Wireless makes no warranties of any kind, either expressed or implied, including any implied warranties of merchantability, fitness for a particular purpose, or noninfringement. The recipient of the manual shall endorse all risks arising from its use.

The information in this manual is subject to change without notice and does not represent a commitment on the part of Sierra Wireless. SIERRA WIRELESS AND ITS AFFILIATES SPECIFICALLY DISCLAIM LIABILITY FOR ANY AND ALL DIRECT, INDIRECT, SPECIAL, GENERAL, INCIDENTAL, CONSEQUENTIAL, PUNITIVE OR EXEMPLARY DAMAGES INCLUDING, BUT NOT LIMITED TO, LOSS OF PROFITS OR REVENUE OR ANTICIPATED PROFITS OR REVENUE ARISING OUT OF THE USE OR INABILITY TO USE ANY SIERRA WIRELESS PRODUCT, EVEN IF SIERRA WIRELESS AND/OR ITS AFFILIATES HAS BEEN ADVISED OF THE POSSIBILITY OF SUCH DAMAGES OR THEY ARE FORESEEABLE OR FOR CLAIMS BY ANY THIRD PARTY.

Notwithstanding the foregoing, in no event shall Sierra Wireless and/or its affiliates aggregate liability arising under or in connection with the Sierra Wireless product, regardless of the number of events, occurrences, or claims giving rise to liability, be in excess of the price paid by the purchaser for the Sierra Wireless product.

Patents

Portions of this product may be covered by some or all of the following US patents:

5,515,013	5,629,960	5,845,216	5,847,553	5,878,234	5,890,057	5,929,815	6,169,884
6,191,741	6,199,168	6,339,405	6,359,591	6,400,336	6,516,204	6,561,851	6,643,501
6,653,979	6,697,030	6,785,830	6,845,249	6,847,830	6,876,697	6,879,585	6,886,049
6,968,171	6,985,757	7,023,878	7,053,843	7,106,569	7,145,267	7,200,512	7,295,171
7,287,162	D442,170	D459,303	D599,256	D560,911			

and other patents pending.

This product includes technology licensed from QUALCOMM® 3G

Manufactured or sold by Sierra Wireless or its licensees under one or more patents licensed from InterDigital Group.

Copyright

© 2010 Sierra Wireless. All rights reserved.

Trademarks

AirCard® and Watcher® are registered trademarks of Sierra Wireless. Sierra Wireless™, AirPrime™, AirLink™, AirVantage™ and the Sierra Wireless logo are trademarks of Sierra Wireless.

wavecom®, ®, ®, inSIM®, WAVECOM®, WISMO®, Wireless Microprocessor®, Wireless CPU®, Open AT® are filed or registered trademarks of Sierra Wireless S.A. in France and/or in other countries.

Windows® and Windows Vista® are registered trademarks of Microsoft Corporation.

Macintosh and Mac OS are registered trademarks of Apple Inc., registered in the U.S. and other countries.

QUALCOMM® is a registered trademark of QUALCOMM Incorporated. Used under license.

Other trademarks are the property of the respective owners.