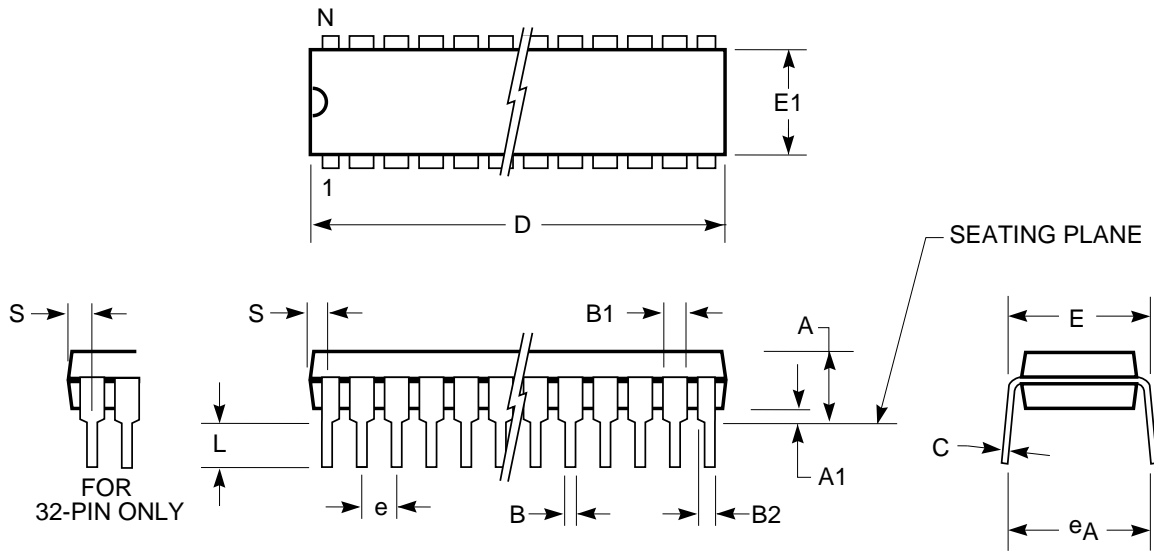


300-mil Plastic DIP  
 Package Code: N, P



300-mil Plastic DIP (N, P)

Symbol	Inches									
	Min	Max	Min	Max	Min	Max	Min	Max	Min	Max
Ref. Std.	8		16		20		28		32	
N	8		16		20		28		32	
A	0.145	0.180	0.145	0.180	0.145	0.180	0.145	0.180	0.140	0.180
A1	0.015	—	0.010	—	0.015	—	0.010	—	0.015	—
B	0.014	0.022	0.018 BSC		0.014	0.22	0.016	0.022	0.015	0.021
B1	0.045	0.060	0.060 BSC		0.045	0.070	0.050	0.070	0.040	0.070
B2	0.032	0.046	—	—	—	—	0.032	0.046	—	—
C	0.008	0.013	0.005	0.015	0.008	0.014	0.008	0.015	0.005	0.015
D	0.359	0.375	0.745	0.755	1.020	1.040	1.380	1.400	1.595	1.605
E	0.300	0.325	0.293	0.320	0.295	0.325	0.295	0.315	0.305	0.325
E1	0.244	0.260	0.245	0.255	0.240	0.280	0.275	0.295	0.285	0.292
e <sub>A</sub>	0.320	0.380	0.320	0.380	—	0.430	0.310	0.400	0.330	0.370
e	0.100 BSC		0.100 BSC		0.100 BSC		0.100 BSC		0.100 BSC	
L	0.125	—	0.120	0.140	0.120	0.150	0.120	0.150	0.120	0.150
S	0.025	0.030	0.015	0.035	0.04	0.06	0.020	0.042	0.065	0.085

Notes:

1. Controlling dimension: inches, unless otherwise specified.
2. BSC = Basic lead spacing between centers.
3. Dimensions D and E1 do not include mold flash protrusions and should be measured from the bottom of the package.
4. Formed leads shall be planar with respect to one another within 0.004 inches at the seating plane.